

A 368985

Certified, Filed and or Recorded on  
Sep. 22, 2009 AT 12:20PM

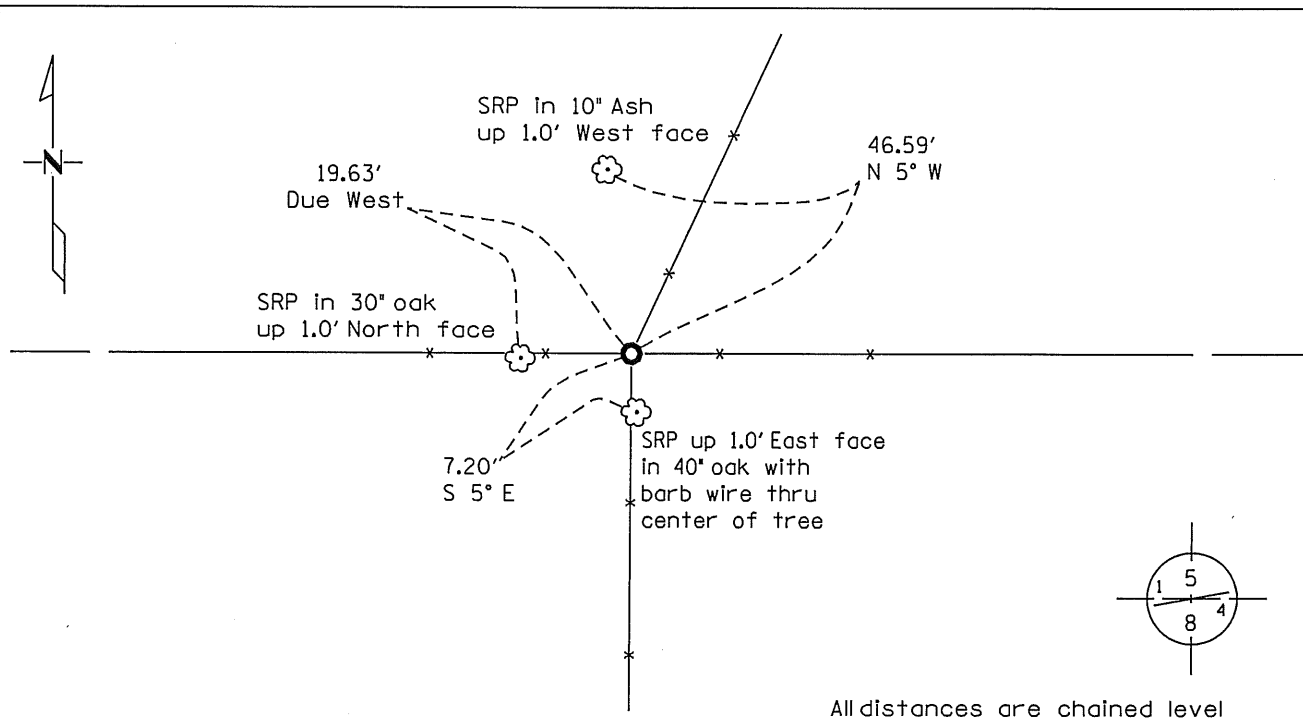
Signed: BW  
MARILYN J NOVAK G V J  
BENTON COUNTY MINNESOTA  
MARILYN J NOVAK  
COUNTY RECORDER  
Fee Amount: \$46.00

### CERTIFICATE OF LOCATION OF GOVERNMENT CORNER

North Quarter Corner of Section 8, Township 36, Range 29  
4TH Principal Meridian, State of Minnesota, County of Benton

At the corner location shown on the sketch:

- On 09-10-09 found a Cast Iron Monument at fence corner  
DATE
- left monument as found     lowered monument     removed monument (explain)
- On \_\_\_\_\_ placed a \_\_\_\_\_  
DATE



Statement of evidence for this corner location is on back of this page.

I hereby certify that this document was researched and prepared by me or under my direct supervision.

Signature *Kevin J. Metz* Date 9-14-2009 License No. 40343  
 Title:  Land Surveyor     Professional Engineer     County Surveyor     County Engineer  
MNDOT

**Statement of Evidence:****North Quarter Corner of Section 8, Township 36 North, Range 29 West, St. George Township, 4<sup>th</sup> Principal Meridian, Benton County, Minnesota.**

- 1855 Oscar F. Davis ran the original public survey and set a wood post at this location and bearing trees were recorded.  
           12" White Oak           S 4 E           71 links
- 1913 County Surveyor's Record Book 1, pages 34 & 35, contains a survey of Section 5 by County Surveyor, J. A. Stanton, which notes this corner found as marked by an iron rod set by former County Surveyor.
- 2003 Survey information from Brown Herkenhoff gives a distance of 5217.64 feet for the north line of Section 8.
- On December 10<sup>th</sup>, 2003, The Minnesota Department of Transportation found a 12" spike at a fence intersection. A 4' x 4' x 2.5' deep area was excavated at the spike location, nothing was found. Fence lines running east-west and south are straight. An area at a computed lost location was searched and nothing was found.
- 2004 On July 8<sup>th</sup>, 2004, The Minnesota Department of Transportation found the 12" spike and placed a Cast Iron Monument at the spike location. Reference Ties were established.  
           County Coordinates Obtained by GPS (for reference only)  
           NAD 83 (1996 Adjustment)  
           N-126970.316  
           E- 518886.503
- 2009 On September 10<sup>th</sup>, 2009, The Minnesota Department of Transportation found a Cast Iron Monument. Reference Ties were verified as shown on the front of this document. The Minnesota Department of Transportation accepts the cast iron monument as the correct location of the North Quarter Corner of Section 8.

For details and survey analysis, contact the Minnesota Department of Transportation District Surveys Office in Baxter, Minnesota.

Certified, Filed and or Recorded on  
Oct. 31, 2008 AT 08:33AM

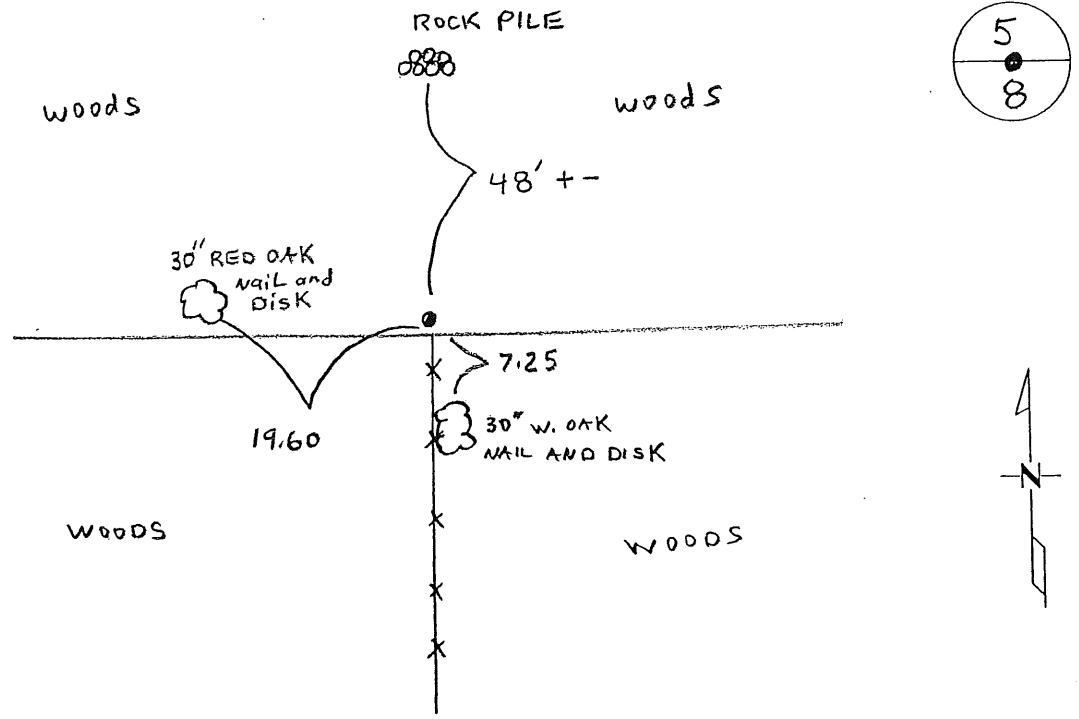
Signed: JU  
MARILYN J NOVAK G V  
BENTON COUNTY MINNESOTA  
MARILYN J NOVAK  
COUNTY RECORDER

# CERTIFICATE OF LOCATION OF GOVERNMENT CORNER

NORTH QUARTER Corner of Section 8, Township 36, Range 29  
4TH Principal Meridian, State of Minnesota, County of Benton

At the corner location shown on the sketch:

- On 8-6-08 found a CAST IRON MON
- left monument as found       lowered monument       removed monument (explain)
- On \_\_\_\_\_ placed an \_\_\_\_\_



Statement of evidence for this corner location is on back of this page.

I hereby certify that this document was researched and prepared by me or under my direct supervision and that I am a licensed Land Surveyor under the laws of the State of Minnesota.

Signature [Handwritten Signature]  
Deputy County Surveyor  
License No. 43932

Date: 10/14/08



Certified, Filed and or Recorded on  
Sep. 23, 2008 AT 01:30PM

Signed: BW  
MARILYN J NOVAK G V  
BENTON COUNTY MINNESOTA  
MARILYN J NOVAK  
COUNTY RECORDER

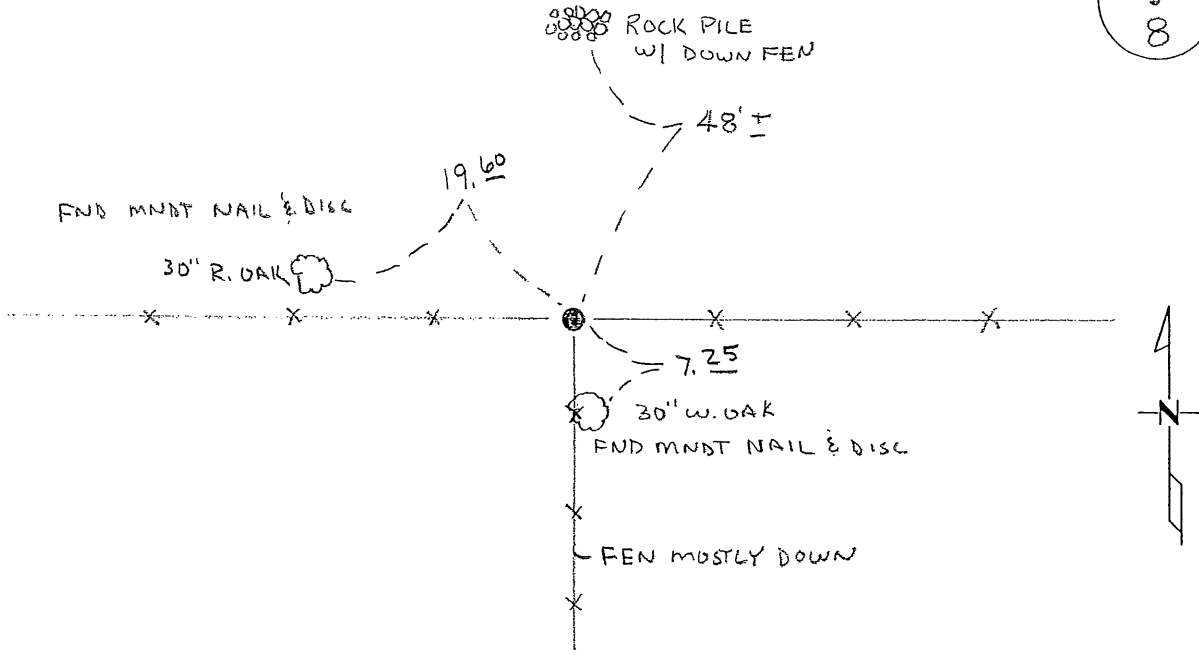
### CERTIFICATE OF LOCATION OF GOVERNMENT CORNER

N 1/4 Corner of Section 8, Township 36, Range 29  
4TH Principal Meridian, State of Minnesota, County of Benton

At the corner location shown on the sketch:

- On 8-6-08 found a CAST IRON MON
- left monument as found       lowered monument       removed monument (explain)
- On \_\_\_\_\_ placed an \_\_\_\_\_

5  
8



Statement of evidence for this corner location is on back of this page.

I hereby certify that this document was researched and prepared by me or under my direct supervision and that I am a licensed Land Surveyor under the laws of the State of Minnesota.

Signature [Handwritten Signature]  
Deputy County Surveyor  
License No. 43932

Date: 8/29/08

Benton County Surveyor's Office  
Chris Hoglund, Deputy County Surveyor  
Minnesota License No. 43932

**Statement of Evidence:**

K081

North Quarter Corner of Section 8, Township 36 North, Range 29 West, St. George Township, 4<sup>th</sup> Principal Meridian, Benton County, Minnesota.

1855 Original US General Land Office survey established this corner set a wood post at this location and bearing trees were recorded.

12" W Oak                      S 4 E                      71 links

1913? County Surveyor's Record Book 1, pages 34 & 35, contains a survey of Section 5 by County Surveyor, J. A. Stanton, which notes this corner found as marked by an iron rod set by former County Surveyor.

2003 Survey information from Brown Herkenhoff gives a distance of 5217.64 feet for the north line of Section 8.

2004 MN/DOT found spike and pulled and found nothing else. Set CIM. Measured 2587.73 feet to the NW corner and 2628.82 feet to the NE corner.

County Coordinates Obtained by GPS

NAD 83 (1996 Adjustment)

N-126970.316

E- 518886.503

2008 Westwood Professional Services, Inc. finds MN/DOT CIM and confirms their coordinate position by RTK GPS. Made extensive search for iron rod set in ~1913 and nothing was found. Position fits favorably with center of section and sixteenth occupation lines to the north in Section 5 as well as center of section and sixteenth occupation lines to the south. Ties are shown on the front of this certificate.