



**Statement of Evidence:**

**K123**

East Quarter Corner of Section 12, Township 36 North, Range 29 West, St. George Township, 4<sup>th</sup> Principal Meridian, Benton County, Minnesota.

1849 Original US General Land Office survey set a wood post with bearing trees noted as.

10" Basswood            N 12 E            60 links

6" Elm                    S 54 W            38 links

A line tree was noted as a 16" Blk Ash South 24.72 chains and a 10" Blk Ash North 20.69 chains.

1987 Paul Wellen, LS 10461, set a cast iron monument at fence corner, with fences running west and south. He filed a Certificate of Location (Doc. No. 182954).

2005 WSN briefly searched corner area and did not find the CIM.

County Coordinates computed to Wellen's position based on 1987 survey using distance from the NE corner and angle from the North ¼ corner.

NAD 83 (1996 Adjustment)

N- 124693.009

E- 542575.863

Conducted another search of the area and did not find the CIM set by Wellen. Fence and field lines have been removed and the corner area falls in a plowed field and CIM has been destroyed. Coordinates are the best evidence of the obliterated position and the corner needs to be reset.

On 8/4/05 set new cast iron monument down 2 feet below plow line.

# CERTIFICATE OF LOCATION OF GOVERNMENT CORNER

East Quarter \_\_\_\_\_ Corner of Section 12, Township 36, Range 29, 4th P.M.

STATE OF MINNESOTA, County of Benton

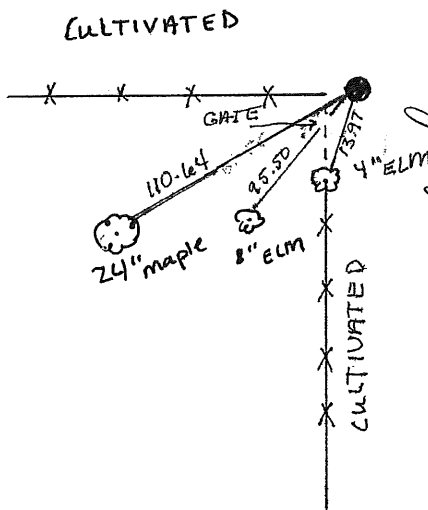
At the corner location shown on the sketch:

On \_\_\_\_\_ found a \_\_\_\_\_  
DATE

left monument as found,  lowered monument,  removed monument (explain)

On 4/13/87 placed a Cast Iron Monument  
DATE

## SKETCH OF REFERENCE TIES



BY *Alice G. Engelmeier* DEPUTY  
ALICE G. ENGELMEIER  
COUNTY RECORDER

MAY 27 2 40 PM '87

OFFICE OF  
BENTON COUNTY RECORDER  
BENTON COUNTY, MN  
CERTIFIED TO BE FILED  
AND/OR RECORDED ON

182954

Statement of evidence relative to this corner location is on back of page.

I hereby certify that this document and the data contained herein was prepared by me or under my direct supervision.

*Paul Miller* 5/5/87  
SIGNATURE DATE

Registration No. 10461

Land Surveyor,  Professional Engineer

County Surveyor,  County Engineer

OFFICE OF THE COUNTY RECORDER  
County of \_\_\_\_\_

I hereby certify that this document was filed in the Co. Recorders office at \_\_\_\_\_ .M. on the \_\_\_\_\_ day of \_\_\_\_\_ A.D., 19 \_\_\_\_\_

County Recorder \_\_\_\_\_

By \_\_\_\_\_, Deputy

DOCUMENT NO. \_\_\_\_\_