

Certified, Filed and or Recorded on  
Nov. 07, 2008 AT 02:26PM

Signed: Ju  
MARILYN J NOVAK  
BENTON COUNTY MINNESOTA  
MARILYN J NOVAK  
COUNTY RECORDER

# CERTIFICATE OF LOCATION OF GOVERNMENT CORNER

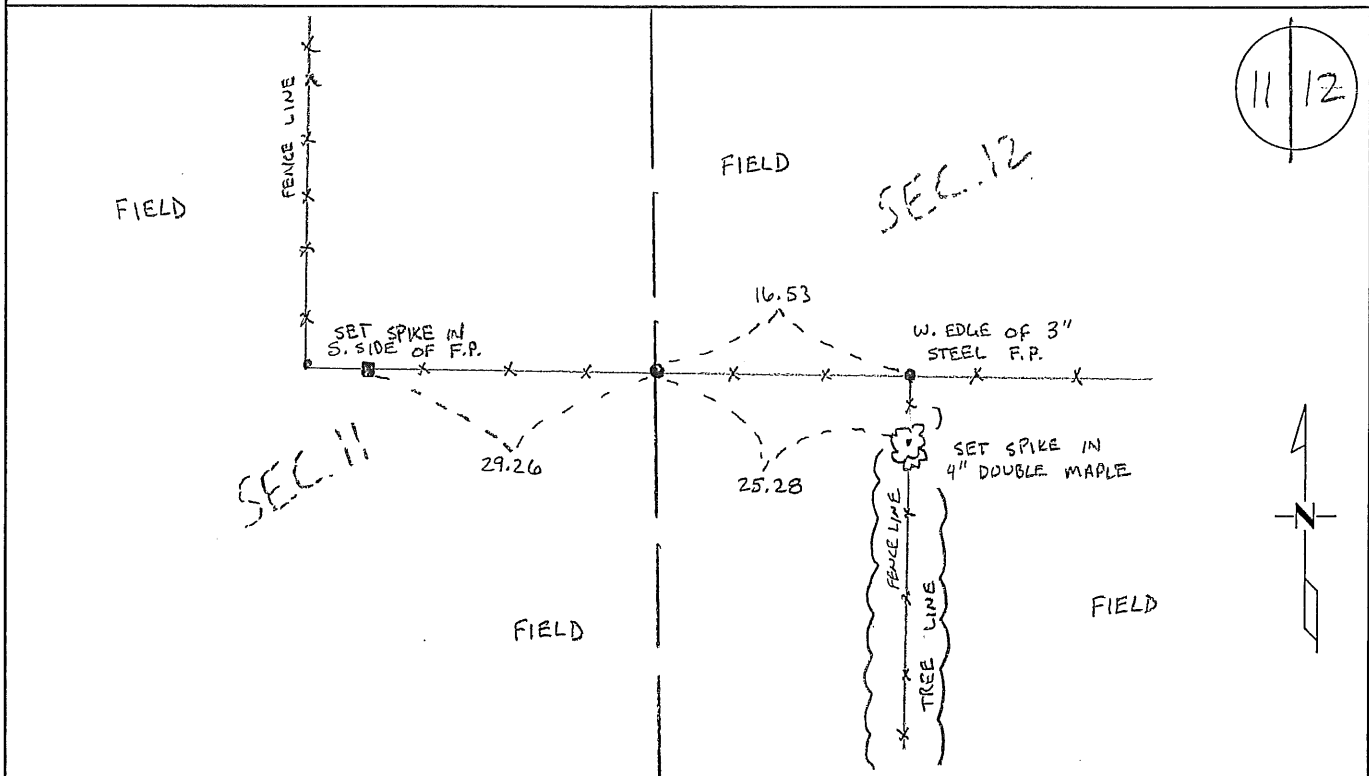
EAST QUARTER Corner of Section 11, Township 36N, Range 29W  
4TH Principal Meridian, State of Minnesota, County of Benton

At the corner location shown on the sketch:

On 10/14/08 found a 1/2" IRON PIPE CAP # 19552 UP 0.5'

left monument as found       lowered monument       removed monument (explain)

On \_\_\_\_\_ placed an \_\_\_\_\_



Statement of evidence for this corner location is on back of this page.

I hereby certify that this document was researched and prepared by me or under my direct supervision and that I am a licensed Land Surveyor under the laws of the State of Minnesota.

Signature Jan W. Olsz  
Deputy Benton County Surveyor  
License No. 45872

Date: 11/06/2008

Benton County Surveyor's Office  
 Jason W. Oberg, Deputy County Surveyor  
 Minnesota License No. 45872

**Statement of Evidence:**

**K113**

The East Quarter Corner of Section 11, Township 36 North, Range 29 West, St. George Township, 4<sup>th</sup> Principal Meridian, Benton County, Minnesota.

1855 Original US General Land Office survey established corner marked by a wood post with bearing trees:

14" Elm	N 61 E	68 links
12" Maple	N 56 W	19 links

2002 No resurvey information was found on this corner in the Benton County records.

2008 The County Surveyor's Office searched and found a ½" iron pipe capped "19552" at 0.5' above the surface along an east-west fenceline. The location is at the intersection of a straight line between the NE Cor. and the SE Cor. of Sec. 11 and the east-west fenceline. The surveyor accepts the position and set ties to same.

County Coordinates Obtained by GPS  
 NAD 83 (1996 Adjustment)  
 N-124753.262  
 E-537410.165