

Certified, Filed and or Recorded on
Nov. 07, 2008 AT 02:24PM

Signed: *MJ*
MARILYN J NOVAK
BENTON COUNTY MINNESOTA
MARILYN J NOVAK
COUNTY RECORDER

CERTIFICATE OF LOCATION OF GOVERNMENT CORNER

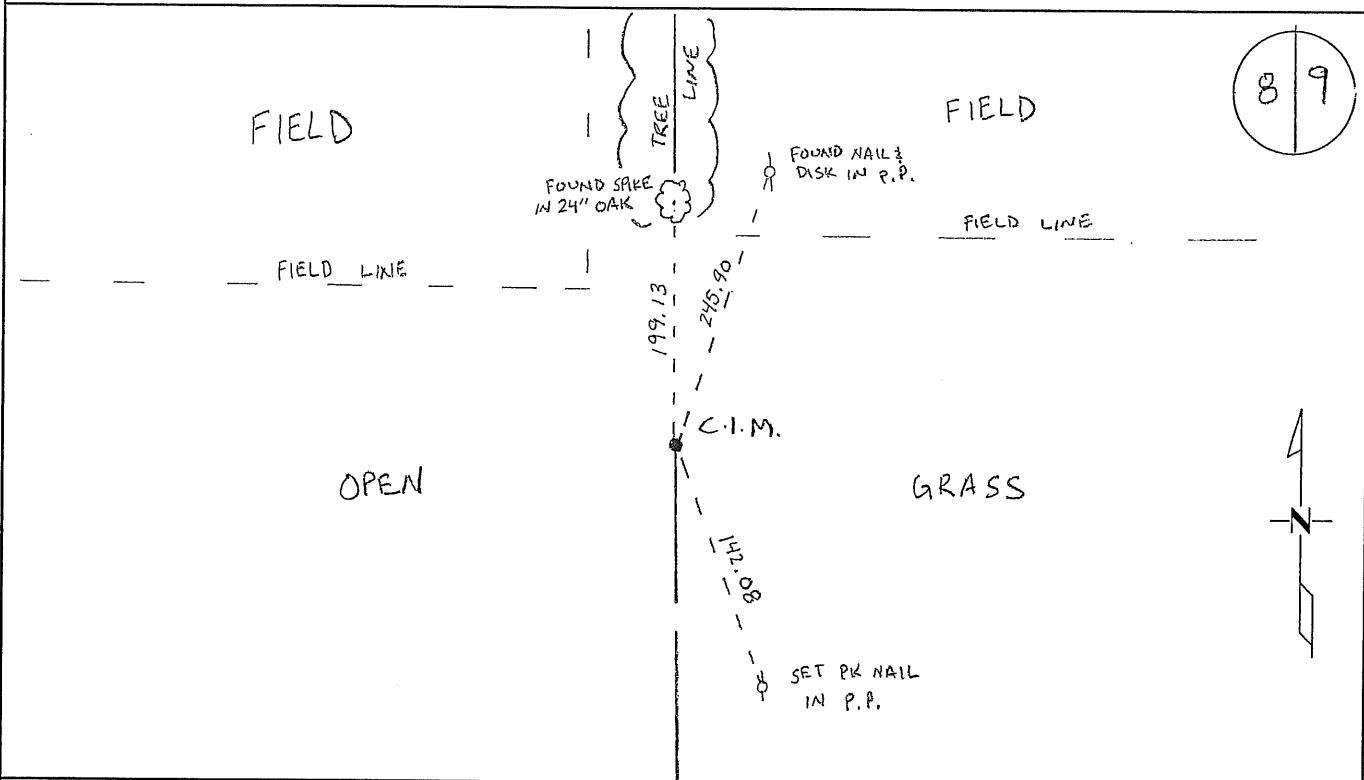
EAST QUARTER Corner of Section B, Township 36N, Range 29W
4TH Principal Meridian, State of Minnesota, County of Benton

At the corner location shown on the sketch:

On 10/14/08 found a CAST IRON MONUMENT DOWN 1.0'

left monument as found lowered monument removed monument (explain)

On _____ placed an _____



Statement of evidence for this corner location is on back of this page.

I hereby certify that this document was researched and prepared by me or under my direct supervision and that I am a licensed Land Surveyor under the laws of the State of Minnesota.

Signature *Jan W. Oly*
Deputy Benton County Surveyor
License No. 45872

Date: 11/06/2008

Benton County Surveyor's Office
 Jason W. Oberg, Deputy County Surveyor
 Minnesota License No. 45872

Statement of Evidence:

K083

The East Quarter Corner of Section 8, Township 36 North, Range 29 West, St. George Township, 4th Principal Meridian, Benton County, Minnesota.

1855 Original US General Land Office survey set a wood post with bearing trees noted as:

15" Maple	S 34 1/2 E	31 links
4" Blk Oak	N 78 W	25 links

2002 No record evidence has been found on this corner in the Benton County records.

2003 Survey information from Brown Herkenhoff gives a distance of 5243.68 feet for the east line of Section 8.

2008 The County Surveyor's Office searched and found a cast iron monument along a north-south field line. The Surveyor measured 5243.46 ft. for an overall distance of the east line of Sec. 8, which agrees with Brown Herkenhoff from 5 years previous. The Surveyor found the cast iron monument 71.83 feet west and 5.80 feet south of the lost position. The Surveyor accepts the position as the best evidence and set ties to same.

County Coordinates Obtained by GPS
 NAD 83 (1996 Adjustment)
 N-124366.229
 E-521504.203