

Certified, Filed and or Recorded on
Mar. 10, 2009 AT 01:10PM

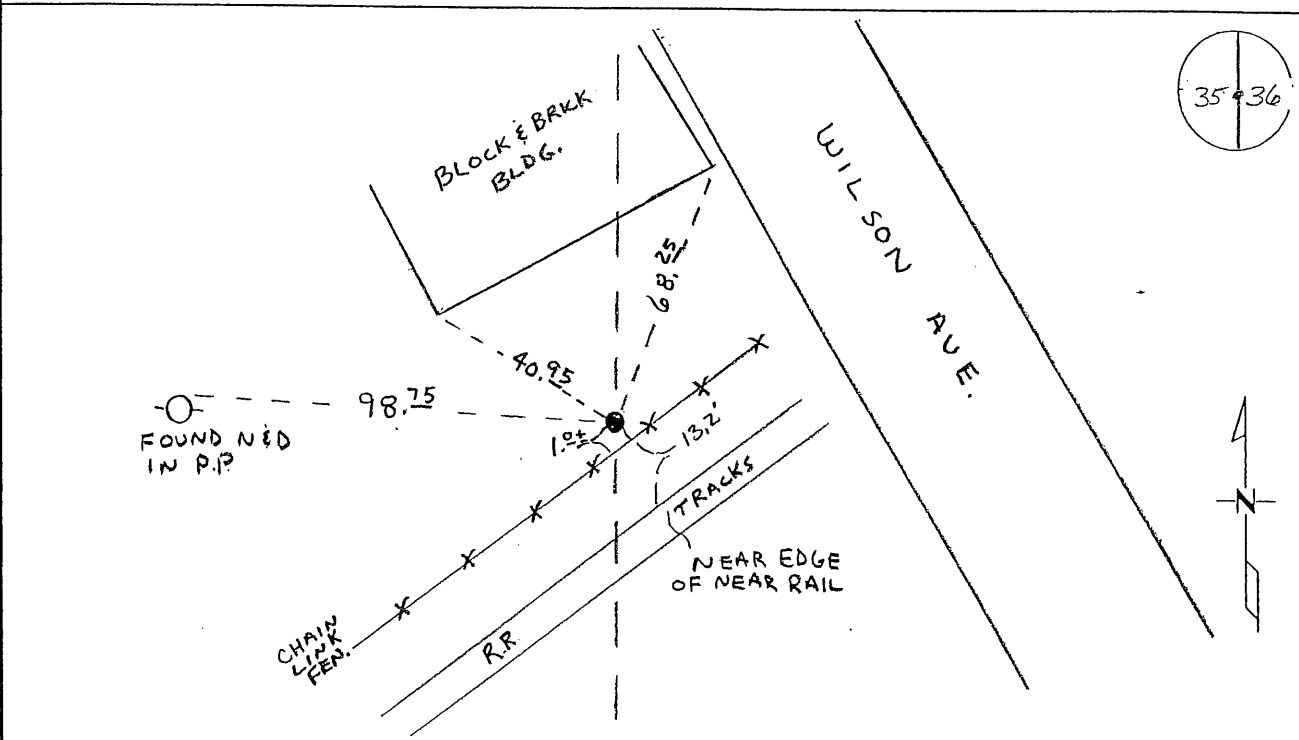
Signed: Cl
MARILYN J NOVAK G V I
BENTON COUNTY MINNESOTA
MARILYN J NOVAK
COUNTY RECORDER

CERTIFICATE OF LOCATION OF GOVERNMENT CORNER

EAST QUARTER Corner of Section 35, Township 36, Range 31
4TH Principal Meridian, State of Minnesota, County of Benton

At the corner location shown on the sketch:

- On 12-2-08 found a CAST IRON MONUMENT
- left monument as found lowered monument removed monument (explain)
- On _____ placed an _____



Statement of evidence for this corner location is on back of this page.

I hereby certify that this document was researched and prepared by me or under my direct supervision and that I am a licensed Land Surveyor under the laws of the State of Minnesota.

Signature Ch. Hagedorn
Deputy County Surveyor
License No. 43932

Date: 3/6/09

Benton County Surveyor's Office
Chris Hoglund, Deputy County Surveyor
Minnesota License No. 43932

Statement of Evidence:

M353

East Quarter Corner of Section 35, Township 36 North, Range 31 West, Sauk Rapids Township, 4th Principal Meridian, Benton County, Minnesota.

1850 Original US General Land Office survey notes that a wood post was set and bearing trees were recorded

10" Bur Oak	42 1/2 E	118 links
8" Blk Oak	N 30 1/2 W	250 links

This corner is noted on the following recorded plats:

<i>DIAL ADDITION</i>	12/26/1990	William Lunser
<i>AUDITORS 1916 SUBDIVISION</i>	4/18/1916	J.P. Soderstrum
<i>AUDITOR'S 1913 SUB OF BLOCK D</i>	12/3/1913	S.S. Chute (Stone)
MN/DOT RIGHT OF WAY PLAT NO. 05-16	3/7/2000	David Kohanek

Undated reference ties call for a 6" X 4" granite monument down 10".

SW Cor. Con. Block Bld.	NW	40.9
SE Cor. Con. Block Bld.	NE	68.30
NE Cor. R/R Switch	SE	43.40
Main RR Track	S	15.95

1981 William Lunser, LS 9394, found a stone monument down 1.5 feet. He set a cast iron monument over the stone and a Certificate of Location (#158859) was recorded.

1998 James Kramer, LS 23668, found a cast iron monument down 0.2 feet, 0.3 feet east of bit and 1.2 feet west of chain link fence and some of William Lunser's ties. A Certificate of Location (#264149) was recorded.

2000 MN/DOT RIGHT OF WAY PLAT NO. 05-16 shows CIM at the corner.

2002 County Coordinates obtained by GPS to CIM
NAD 83 (1996 Adjustment)
N- 102675.529
E- 473701.139

2008 Westwood Professional Services, Inc. found a cast iron monument at the corner location. CIM fits undated ties to granite monument and ties as shown on 1981 Lunser certificate. CIM is accepted as marking the obliterated position of this corner. Coordinates obtained by GPS coincide with 2002 position.

264149

OFFICE OF
BENTON COUNTY RECORDER
BENTON COUNTY, MN
CERTIFIED TO BE FILED
AND/OR RECORDED ON

FEB 8 11 44 AM '00

ALICE C. ENGELMEYER
COUNTY RECORDER

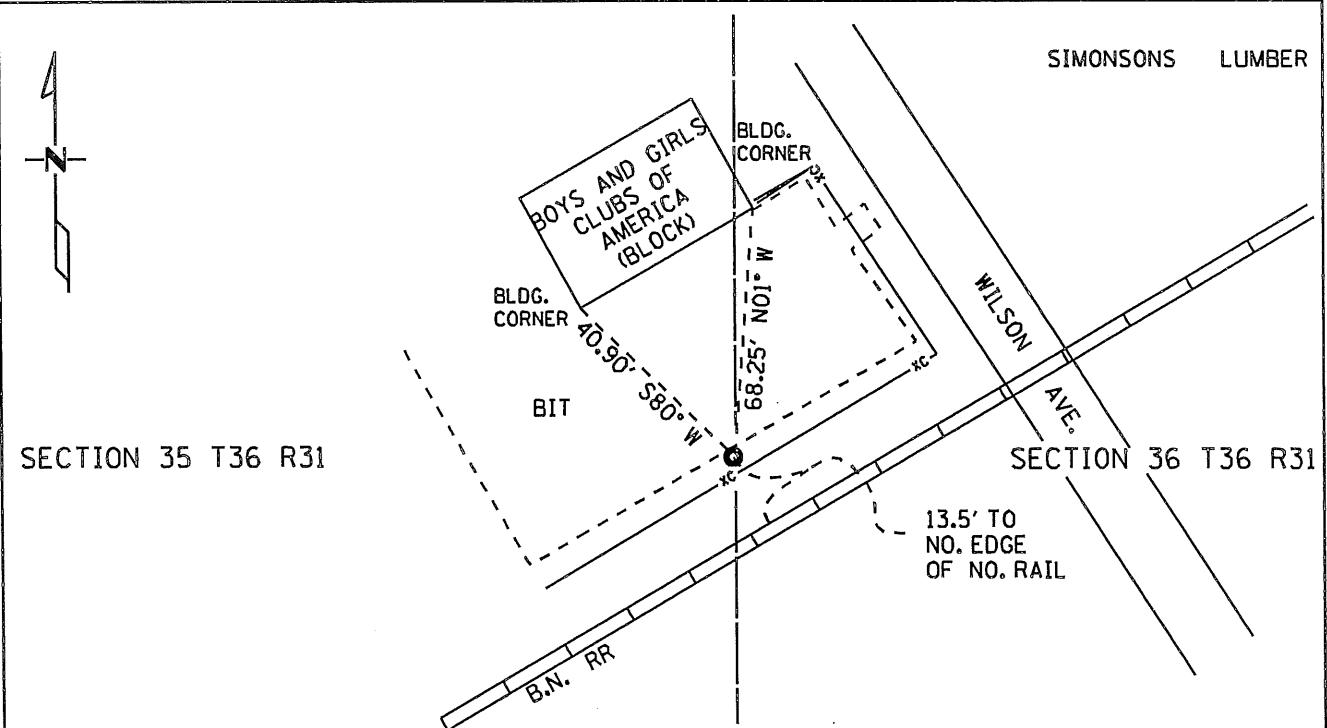
BY mm DEPUTY xm

CERTIFICATE OF LOCATION OF GOVERNMENT CORNER

EAST QUARTER Corner of Section 35, Township 36, Range 31
4 TH Principal Meridian, State of Minnesota, County of BENTON

At the corner location shown on the sketch:

- On 6-3-98 found a CAST IRON MONUMENT DOWN 0.2 FEET
DATE
MONUMENT IS 0.3 FEET EAST OF BIT. AND 1.2 FEET WEST OF CHAIN LINK FENCE
- left monument as found lowered monument removed monument (explain)
- On _____ placed a _____
DATE



Statement of evidence for this corner location is on back of this page.

I hereby certify that this document was researched and prepared by me or under my direct supervision.

Signature James Kramer Date 1-14-00 License No. 23668
 Title: Land Surveyor Professional Engineer County Surveyor County Engineer

Statement of Evidence: East Quarter Corner Section 35, Township 36 North, Range 31 West.

For previous information about this corner refer to the certificate of location of government corner document of said east quarter corner on file with the Benton County Highway Department, dated March 20, 1981, which was created by William Lunser, Mn Reg. No. 9394..

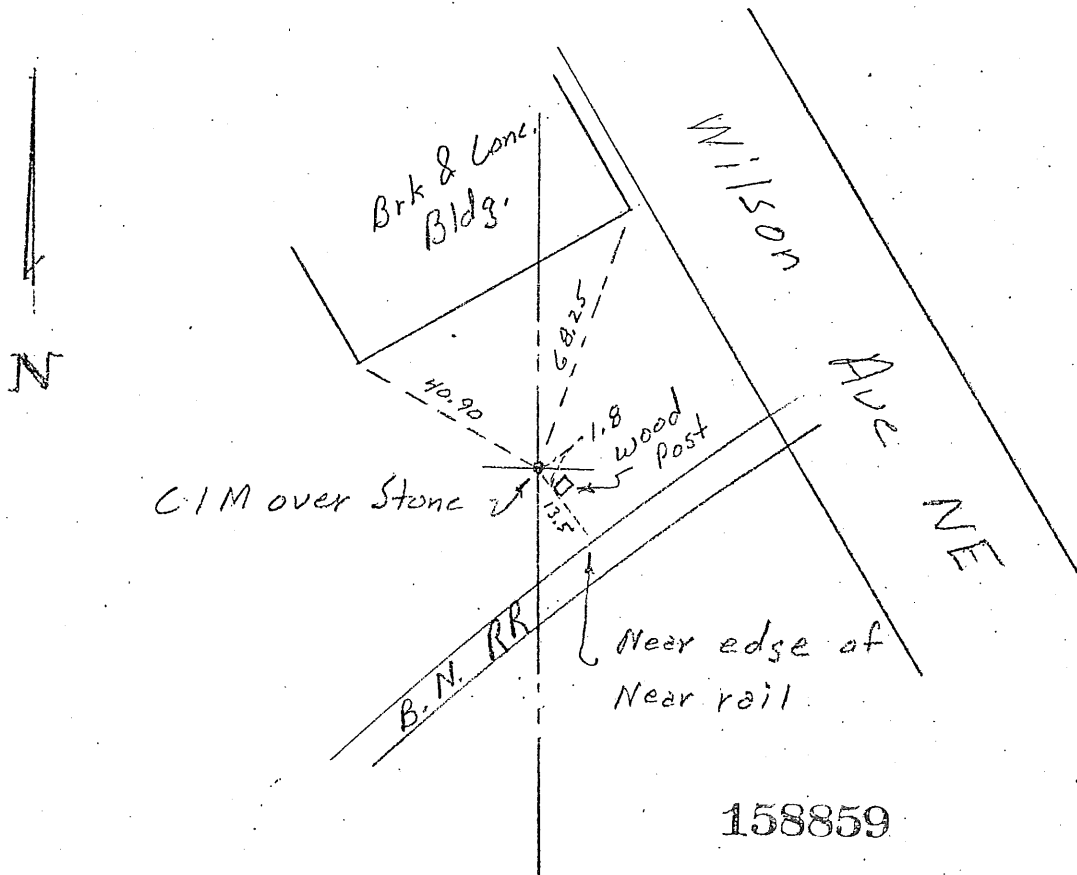
In 1998 the Minnesota Department of Transportation found a cast iron monument and ties in accordance with Lunser's certificate. The Minnesota Department of Transportation accepted the position as the correct location for the corner. In 2000, the Minnesota Department of Transportation measured new ties and made a new certificate of location of government corners.

For details and survey analysis, contact the Minnesota Department of Transportation District Surveys Office in Baxter, Minnesota.

CERTIFICATE OF LOCATION OF GOVERNMENT CORNER

I hereby certify that on the 20TH day of March, 1981
I did Find the East Quarter corner of Section 35,
Twp. 36, Rg. 31, Benton County County, Minnesota, which
was evidenced by a stone monument 1.5 feet below surface

I further certify that in order to perpetuate said corner I did
at the exact location thereof place a permanent marker consisting
of Benton County cast iron monument over the stone and that
I did establish witness or reference monuments as shown below:



I hereby certify that the
above is true and correct
and that I am a registered
Land Surveyor under the laws
of the State of Minnesota.

William P. Linn

Minn. Registration No. 9394

Office of the County Recorder,
Benton County, Minn.

I hereby certify that the within
instrument was filed for record
in this office on the 7th day of
April, 1981. 3 P.M.

F.A. Johnson
County Recorder

By _____ Deputy.