

381440

Certified, Filed and or Recorded on  
May 03, 2011 12:19 PM

BENTON COUNTY MINNESOTA  
MARILYN J NOVAK  
COUNTY RECORDER

By: CK

6 -- V -- I

### CERTIFICATE OF LOCATION OF GOVERNMENT CORNER

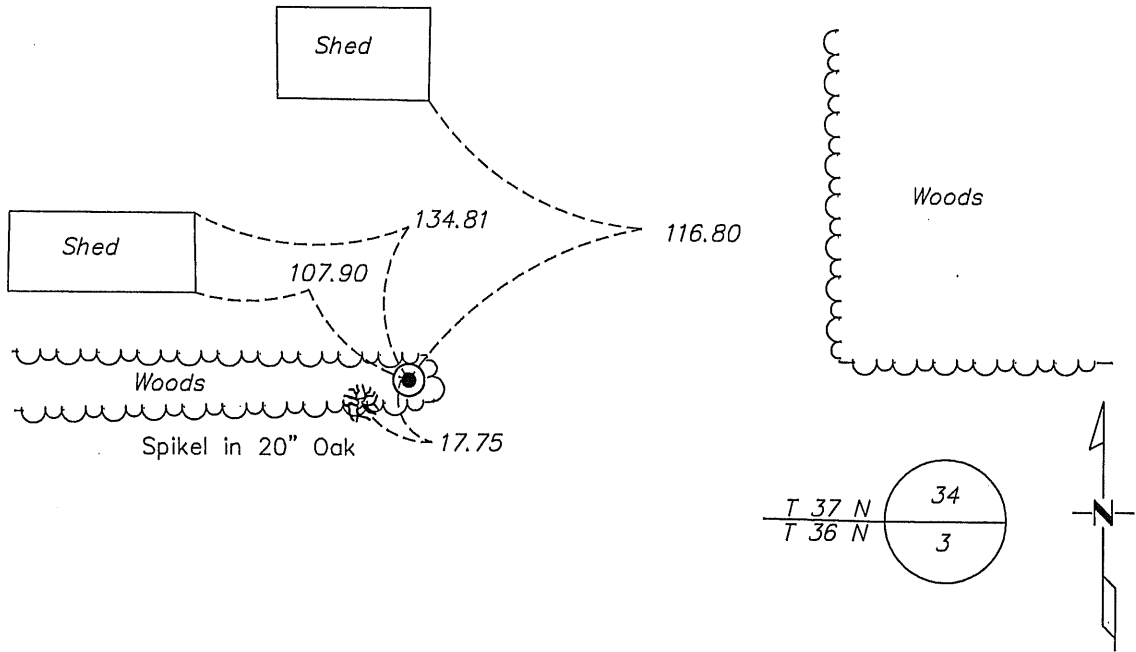
North Quarter Corner of Section 3, Township 36 North, Range 31 West, Fourth Principal Meridian, Benton County, Minnesota.

At this corner location shown on the sketch:

On 4/07/2011 found a Cast Iron Monument

left monument as found     lowered monument     removed monument (explain)

On \_\_\_\_\_ placed an \_\_\_\_\_



Statement of evidence for this corner location is on back of this page.

I hereby certify that this document was researched and prepared by me or under my direct supervision and that I am a Licensed Land Surveyor under the laws of the State of Minnesota.

Signature Jerome C. Wiestock  
Benton County Surveyor  
License No. 19552

Date: 5/3/2011

Benton County Surveyor's Office  
 Jerome C. Wittstock, County Surveyor  
 Minnesota License No. 19552

**Statement of Evidence:****M031**

North Quarter Corner of Section 3, Township 36 North, Range 31 West, Sauk Rapids Township, 4<sup>th</sup> Principal Meridian, Benton County, Minnesota.

- 1849 Original US General Land Office set a wood post at this location and bearing trees were recorded.
- |            |        |          |
|------------|--------|----------|
| 6" Blk Oak | N 14 E | 12 links |
| 6" Blk Oak | S 43 W | 19 links |
- Line trees were noted as a 10" W Birch West 17.03 chains and a 12" Poplar East 20.65 chains.

This corner is noted on the following recorded plats:

*MNDOT ROW PLAT 5-17*      4/26/2002      Jim Kramer      CIM

- 1979 David Regan, LS 12236, shows in a survey that a 1" iron pipe marks this corner and reference ties are taken.
- 1989 William Lunser, LS 9394, found a 1" iron pipe per Regan's records. He removed the monument and set a cast iron monument at the location of the pipe. A Certificate of Location (#195964) was filed. Shows distances of 2649.53 feet to the NW corner and 2675.73 feet to the NE corner.
- Paul Wellen, LS 10461, found a cast iron monument at the corner location. Older record in his files shows corner at lost position with distances of 2658.80 feet to the section corners.
- 1999 James Kramer, LS 23668, with MN/DOT, found a cast iron monument at the corner and notes old fence line south. A Certificate of Location (#265885) was filed. Shows distances of 2649.56 feet to the NW corner and 2675.82 feet to the NE corner.
- 2002 No resurvey information was found on this corner in the Benton County records.
- 2004 Westwood Professional Services, Inc. found a cast iron monument at the corner location. Measured 2675.75 feet to the NE corner and 2649.60 feet to the NW corner.
- County Coordinates Obtained by GPS  
 NAD 83 (1996 Adjustment)  
 N- 132210.058  
 E- 465174.273
- 2011 The Benton County Surveyor's Office found the Cast Iron Monument, verified the 2004 coordinates and established reference ties.

265885

OFFICE OF  
BENTON COUNTY RECORDER  
BENTON COUNTY, MN  
CERTIFIED TO BE FILED  
AND/OR RECORDED ON

MAY 5 8 19 AM '00

ALICE Q. ENGELBREY  
COUNTY RECORDER

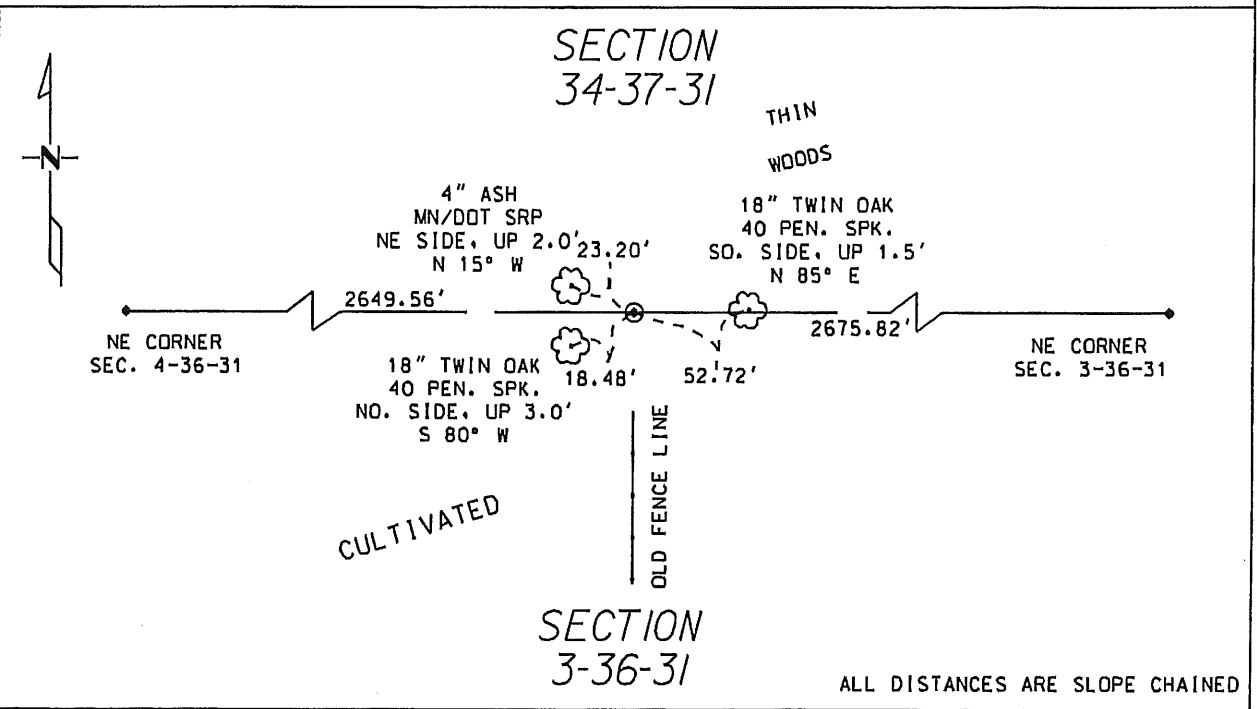
*Alice Engelbrej*

# CERTIFICATE OF LOCATION OF GOVERNMENT CORNER

NORTH QUARTER Corner of Section 3, Township 36, Range 31  
4th Principal Meridian, State of Minnesota, County of BENTON

At the corner location shown on the sketch:

- On 1/6/99 found a BENTON COUNTY CAST IRON MONUMENT  
DATE
- left monument as found     lowered monument     removed monument (explain)
- On \_\_\_\_\_ placed a \_\_\_\_\_  
DATE



Statement of evidence for this corner location is on back of this page.

I hereby certify that this document was researched and prepared by me or under my direct supervision.

Signature *James Kramer* Date 4-5-2000 License No. 23668

Title:  Land Surveyor     Professional Engineer     County Surveyor     County Engineer

Statement of Evidence:

North Quarter Corner Section 3, Township 36 North, Range 31 West.

Theodore Conkey and John Ryan ran the original public land surveys in 1849 and 1850. A wood post was set to mark the corner. Bearing tree ties were made to two 6" black oak trees.

Records on file at the office of David P. Regan, RLS show the corner as being marked with a 1" iron pipe on October 16, 1979. Ties were taken at this time.

On May 17, 1989 William Lunser, RLS found a 1" pipe that corresponded with the ties and the distance to the Southeast corner of Section 34 of Regan's records. A Benton County cast iron monument was placed at this time and a certificate filed as Doc. #195964.

On January 6, 1999 Mn/Dot survey crews found Benton County cast iron monument in accordance with Lunser's certificate. Ties to the monument were updated at this time. The Minnesota Department of Transportation accepts the position of the found cast iron monument as the correct location for the corner.

For details and survey analysis, contact the Minnesota Department of Transportation District Surveys Office in Baxter, Minnesota.

# CERTIFICATE OF LOCATION OF GOVERNMENT CORNER

North Quarter Corner of Section 3, Township 36, Range 31, 4<sup>th</sup> P.M.  
STATE OF MINNESOTA, County of Benton

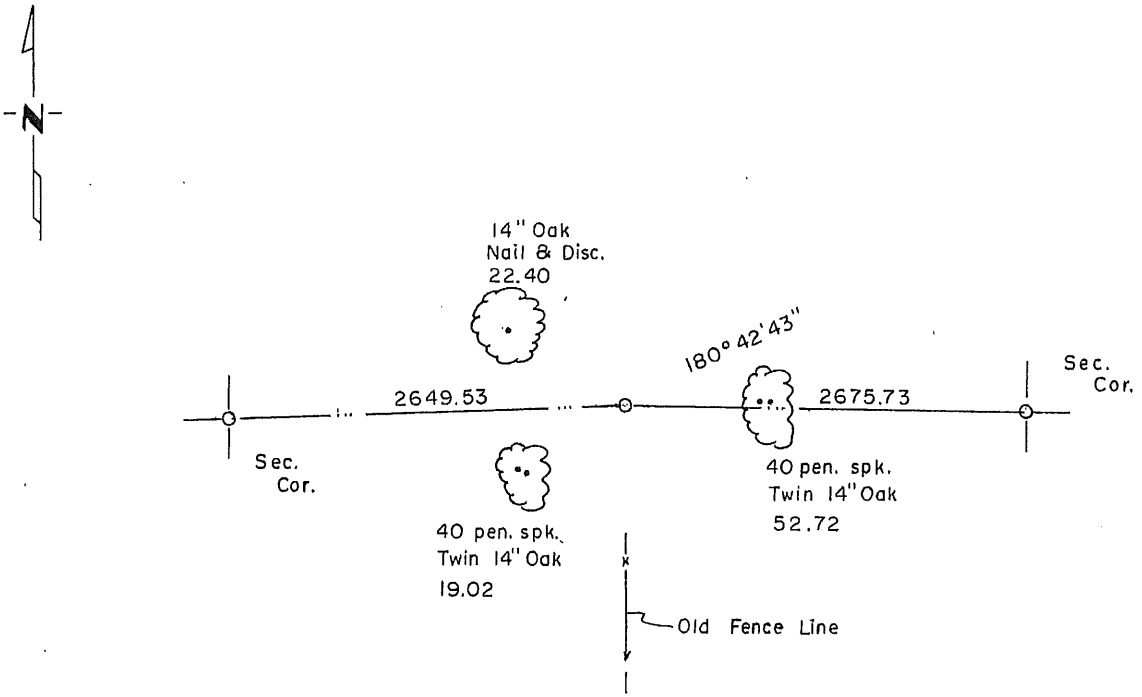
At the corner location shown on the sketch:

On 5-17-1989 found a 1" iron pipe  
DATE

left monument as found,  lowered monument,  removed monument (explain)

On 5-17-1989 placed a Benton County Cast Iron Mon.  
DATE

### SKETCH OF REFERENCE TIES



Statement of evidence relative to this corner location is on back of page.

I hereby certify that this document and the data contained herein was prepared by me or under my direct supervision.

William J. Jensen 1/5/90  
SIGNATURE DATE

Registration No. 9394

- Land Surveyor,  Professional Engineer
- County Surveyor,  County Engineer

OFFICE OF THE REGISTER OF DEEDS  
County of \_\_\_\_\_

I hereby certify that this document was filed in the Reg. of Deeds office at \_\_\_\_\_ .M. on the \_\_\_\_\_ day of \_\_\_\_\_ A.D., 19 \_\_\_\_\_

Register of Deeds \_\_\_\_\_

By \_\_\_\_\_, Deputy

DOCUMENT NO. \_\_\_\_\_

Statement of Evidence:

In searching the records of Mr. David Regan, Land Surveyor, it was found this corner had been marked by a 1" iron pipe in 10-16-1979 and ties where taken at that time.

5-17-1989 Found a 1" iron pipe and checked with the ties taken in 1979, also verified distance to the southeast corner of said section. Placed a cast iron mon.

1 9 5 9 6 4

OFFICE OF  
BENTON COUNTY RECORDER  
BENTON COUNTY, MN  
CERTIFIED TO BE FILED  
AND/OR RECORDED ON

JAN 11 8 36 AM '90

ALICE C. ENGELMEYER  
COUNTY RECORDER

BY *Alw* DEPUTY