

Certified, Filed and or Recorded on
Dec. 16, 2008 AT 01:52PM

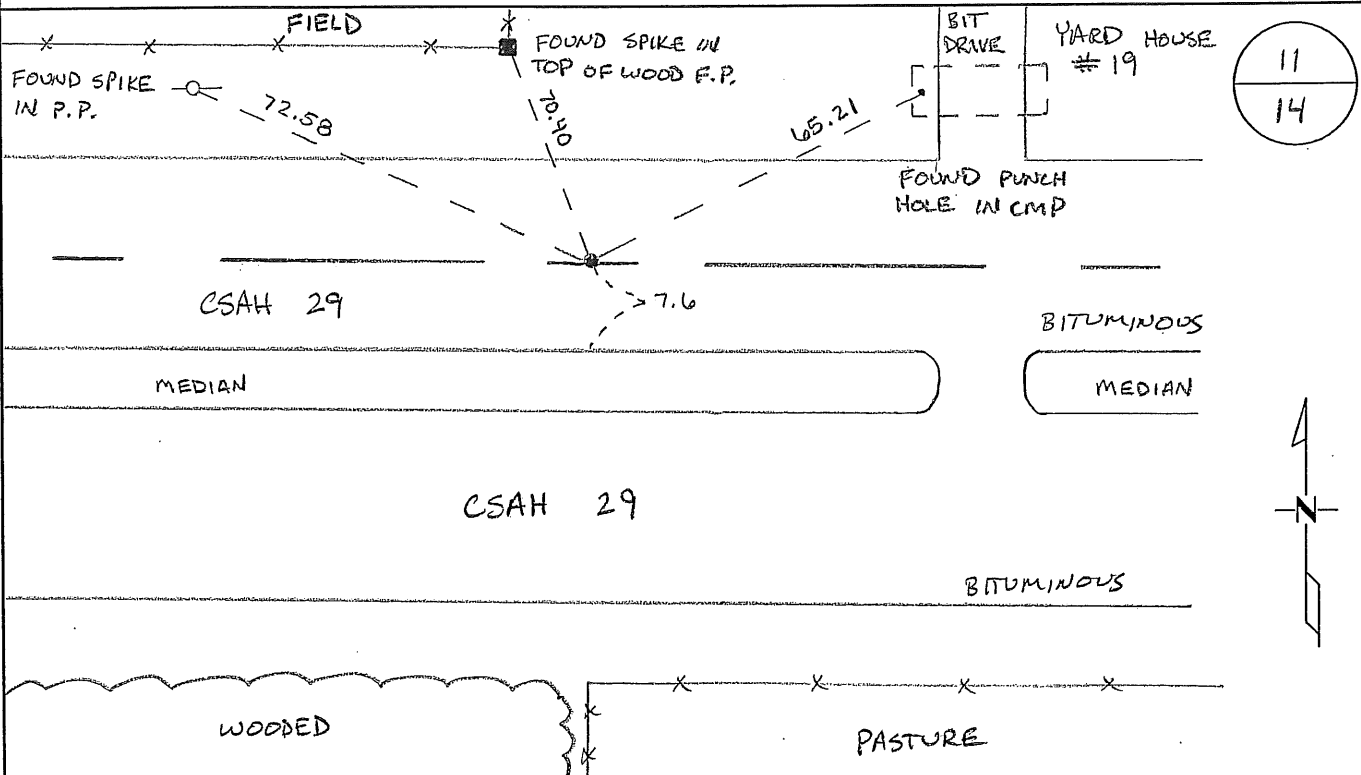
Signed: BW
MARILYN J NOVAK G V
BENTON COUNTY MINNESOTA
MARILYN J NOVAK
COUNTY RECORDER

CERTIFICATE OF LOCATION OF GOVERNMENT CORNER

NORTH QUARTER Corner of Section 14, Township 36N, Range 31W
4TH Principal Meridian, State of Minnesota, County of Benton

At the corner location shown on the sketch:

- On 11/24/08 found a PK NAIL FLUSH TO ROAD SURFACE
- left monument as found lowered monument removed monument (explain)
- On _____ placed an _____



Statement of evidence for this corner location is on back of this page.

I hereby certify that this document was researched and prepared by me or under my direct supervision and that I am a licensed Land Surveyor under the laws of the State of Minnesota.

Signature M. Novak
Deputy Benton County Surveyor
License No. 46170

Date: 12/12/08

Benton County Surveyor's Office
 Nancy H. Lewis, Deputy County Surveyor
 Minnesota License No. 46170

Page 1 of 2

Statement of Evidence:

M141

North Quarter Corner of Section 14, Township 36 North, Range 31 West, Sauk Rapids Township, 4th Principal Meridian, Benton County, Minnesota.

- 1850 Original US General Land Office survey set a wood post at this location and bearing trees were recorded.
- | | | |
|--------------|------------|-----------|
| 12" Blk. Oak | S 78 1/2 E | 154 links |
| 8" Blk. Oak | N 57 E | |
- 1934 County Engineer's Notebook No. 95 for survey of CAR 29 running west to east. Corner is marked by a spike in center of east-west road with fence line north. Ties:
- | | | |
|----------|----|-------|
| Twin Oak | NW | 34.8' |
| 2" Oak | SW | 43.0' |
- Stationing shows corner 2716.6 feet east of the NW corner.
- 1959 Roll E-3, of the MN/DOT Highway plans for TH 10, show a nail set by Benton County. The nail is 2650.6 feet from the NE corner Sec 14. Roll F-3, of the MN/DOT Highway plans, show the nail as set by Benton County in 1959.
- 1960 County Engineer's Notebook No. 216 for survey of CSAH 29 running west to east. Corner is marked by a spike in center of east-west road. Ties:
- | | | |
|-----------|----|-------|
| TP | NW | 39.5' |
| 5" R. Oak | SW | 43.0' |
- Stationing shows corner 2718.8 feet east of the NW corner.
- 1969 The Minnesota Highway Department found a spike that was set by the Benton County Highway Department in 1959, a distance of 2718.70 feet east of the NW corner of Section 14.
- 1982 Dave Regan, LS 12236, found a 1" iron pipe in the centerline of County Road 29, 11 feet east of a fence line from the north. A Certificate of Location (#162595) was filed.
- 1984 Paul Wellen, LS 10461, in Book 39, page 88, shows a cast iron monument at the corner location, which is 2717.62 feet from the NW corner Sec 14 and 2667.09 feet from the NE corner Sec. 14.
- 1991 James Nielsen, LS 11865, found a cast iron monument and 1 of Regan's reference ties. A distance of 2717.64 feet was measured from the NW corner of Section 14. A Certificate of Location (#216782) was filed.
- 1993 MN/DOT Right of Way Plat No. 05-12 notes a Benton County CIM at the corner.
- 1997 Roll F-15, of the MN/DOT Highway plans, show a cast iron monument at the intersection of a centerline east/west and a power pole line south.
- 2000 Westwood Professional Services, Inc. found a cast iron monument and located it using GPS.
 Coordinates Obtained by GPS (Cast Iron Monument)
 NAD 83 (1996 Adjustment)
 N-121181.534
 E-470661.933
- 2003 Linda Brown, LS 23682, reported CIM destroyed.

A 362408

Benton County Surveyor's Office
Nancy H. Lewis, Deputy County Surveyor
Minnesota License No. 46170

Page 2 of 2

2008 The County Surveyor's Office searched and found a PK nail 7.6± feet north of the median of an east-west road (C.S.A.H. No. 29) and on line with a south fence line and east of a north fence line. The position gives distances to the NW Cor. and NE Cor. of 2717.38 feet and 2667.53 feet respectively, which agrees with the County Engineer's 1934 report and Wellen's 1984 report. Surveyor questions distance reported by 1959 MNDOT Highway plans. Surveyor accepts PK as best evidence. Coordinates were verified and ties updated.

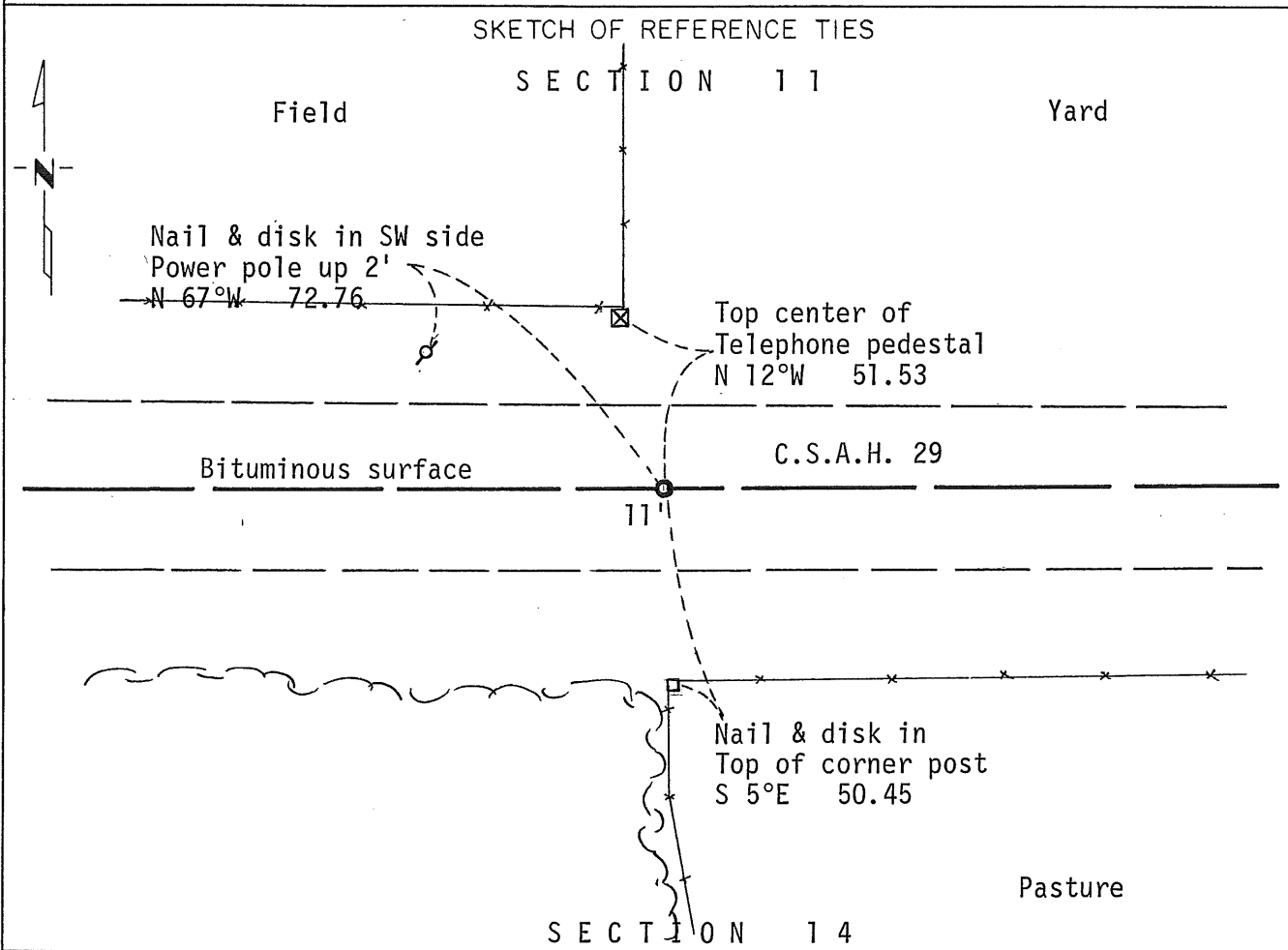
CERTIFICATE OF LOCATION OF GOVERNMENT CORNER

North Quarter _____ Corner of Section 14, Township 36N, Range 31W, 4th P.M.

STATE OF MINNESOTA, County of Benton

At the corner location shown on the sketch:

- On 12/14/1991 found a Benton County cast iron monument
DATE
- left monument as found, lowered monument, removed monument (explain)
- On _____ placed a _____
DATE



Statement of evidence relative to this corner location is on back of page.

I hereby certify that this document and the data contained herein was prepared by me or under my direct supervision.

James W. Nielsen 7/20/93
SIGNATURE DATE

Registration No. 11865

- Land Surveyor, Professional Engineer
- County Surveyor, County Engineer

OFFICE OF THE COUNTY RECORDER

County of _____

I hereby certify that this document was filed in the Co. Recorders office at _____ M. on the _____ day of _____ A.D., 19 _____

County Recorder _____

By _____, Deputy

DOCUMENT NO. _____

Statement of Evidence: North Quarter Corner Section
Section 14, Township 36 North, Range 31 West

The Original Government Survey was run in 1850 and a wood post was set to mark the corner.

No survey records were found at the Benton County Courthouse.

In 1969 the Minnesota Highway Department found a spike at the corner that was set by the Benton County Highway Department in 1959, a distance of 2718.70 feet east of the Northwest Corner of Section 14.

In 1982 Mr. David Regan, Registered Land Surveyor, found a one-inch iron pipe in the center of CSAH #29 and 11 feet east of a fence line north. Mr. Regan set a Benton County cast iron monument at the pipe location and filed a Certificate of Location of Government Corner at the County Highway Department.

In 1991 the Minnesota Department of Transportation (Mn/DOT) recovered the cast iron monument and one of Mr. Regan's reference ties. This location is 2717.64 feet east of the Northwest Corner of Section 14 and has been used by the local surveyors. Mn/DOT accepts this monument as the correct location for the corner.

For detail and survey analysis contact the Mn/DOT Surveys Office in Baxter, MN.

216782

OFFICE OF
BENTON COUNTY RECORDER
BENTON COUNTY, MN
CERTIFIED TO BE FILED
AND/OR RECORDED ON

AUG 3 4 10 PM '93

ALICE C. ENGELMEYER
COUNTY RECORDER

BY DEPUTY

CERTIFICATE OF LOCATION OF GOVERNMENT CORNER

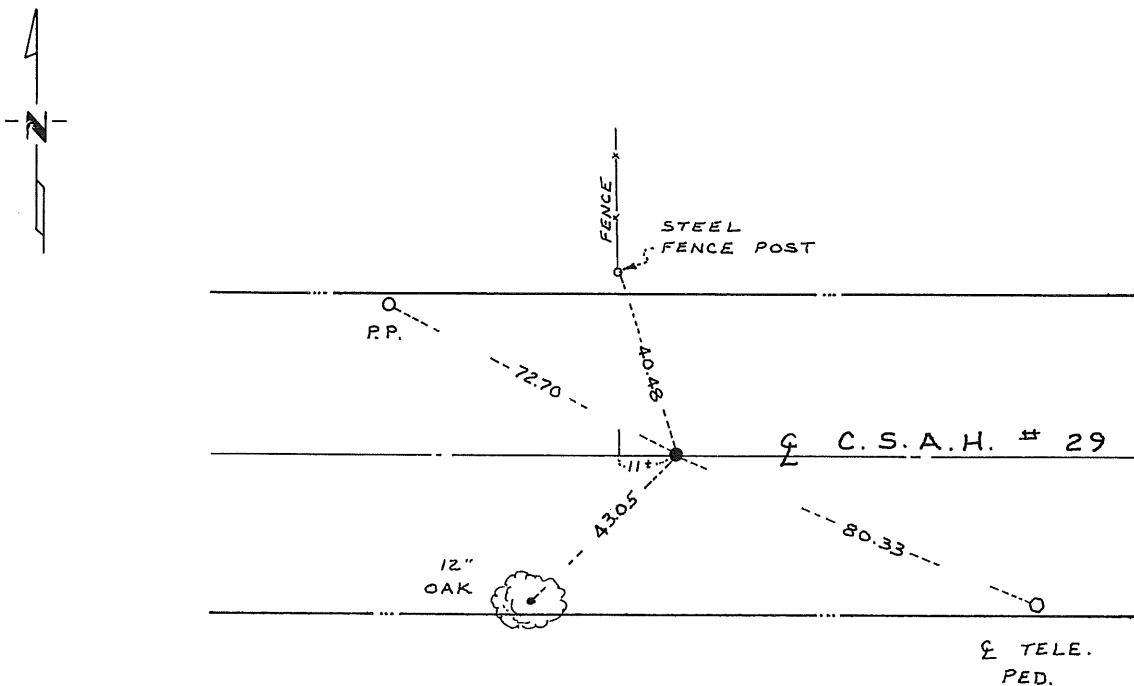
North Quarter _____ Corner of Section 14, Township 36, Range 31, 4th P.M.

STATE OF MINNESOTA, County of Benton

At the corner location shown on the sketch:

- On 5/29/82 found a 1 inch iron pipe in center line of County Road 11 feet east of fence line to north
DATE
 left monument as found, lowered monument, removed monument (explain)
- On 5/29/82 placed a Benton County cast iron monument
DATE

SKETCH OF REFERENCE TIES



Statement of evidence relative to this corner location is on back of page.

I hereby certify that this document and the data contained herein was prepared by me or under my direct supervision.

David P. Regan 7/13/82
SIGNATURE DATE

Registration No. 12236

- Land Surveyor, Professional Engineer
- County Surveyor, County Engineer

OFFICE OF THE REGISTER OF DEEDS County Recorder
 County of Benton

I hereby certify that this document was filed in the Reg. of Deeds office at 10 P.M. on the 27 day of July A.D., 19 82

Register of Deeds County Recorder F.R. Johnson

By _____, Deputy

DOCUMENT NO. 162595