

A 364259

Certified, Filed and or Recorded on
Mar. 10, 2009 AT 01:09PM

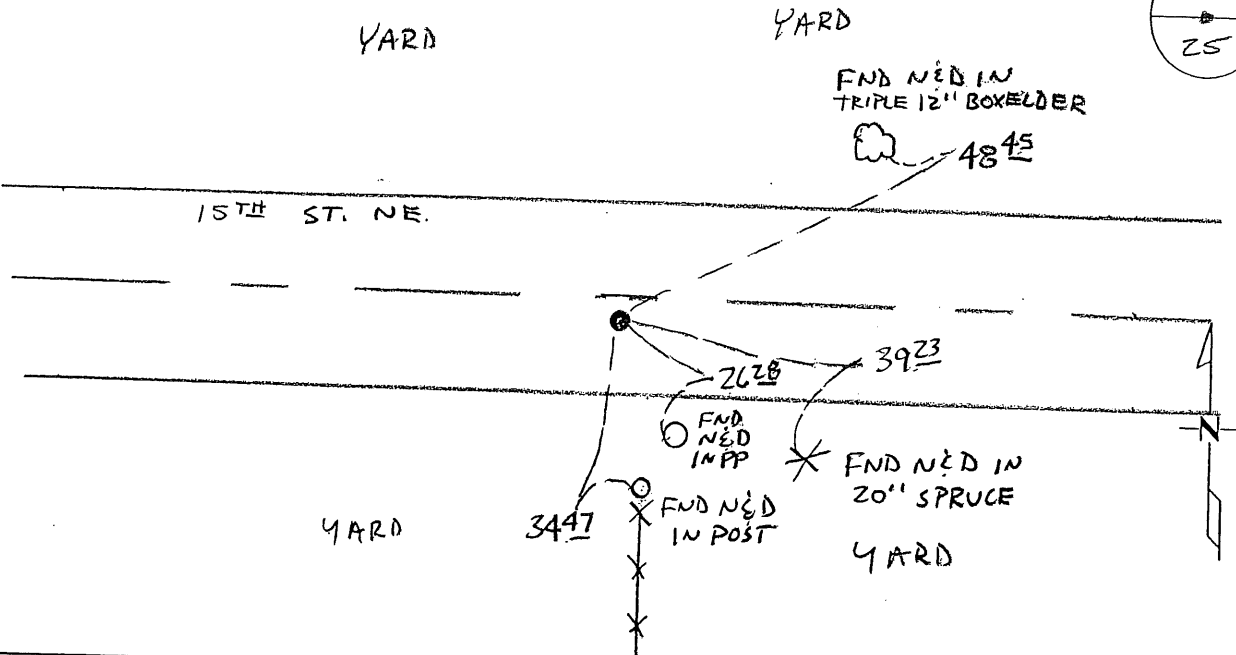
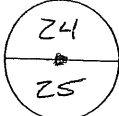
Signed: Ch
MARILYN J NOVAK G V I
BENTON COUNTY MINNESOTA
MARILYN J NOVAK
COUNTY RECORDER

CERTIFICATE OF LOCATION OF GOVERNMENT CORNER

NORTH QUARTER Corner of Section 25, Township 36, Range 31
4TH Principal Meridian, State of Minnesota, County of Benton

At the corner location shown on the sketch:

- On 11-25-08 found a CAST IRON MONUMENT
- left monument as found lowered monument removed monument (explain)
- On _____ placed on _____



Statement of evidence for this corner location is on back of this page.

I hereby certify that this document was researched and prepared by me or under my direct supervision and that I am a licensed Land Surveyor under the laws of the State of Minnesota.

Signature Ch
Deputy County Surveyor
License No. 43932

Date: 3/6/09

Benton County Surveyor's Office
 Chris Hogle, Deputy County Surveyor
 Minnesota License No. 43932

Statement of Evidence:

M251

North Quarter Corner of Section 25, Township 36 North, Range 31 West, Sauk Rapids Township, 4th Principal Meridian, Benton County, Minnesota.

This corner is noted on the following recorded plats:

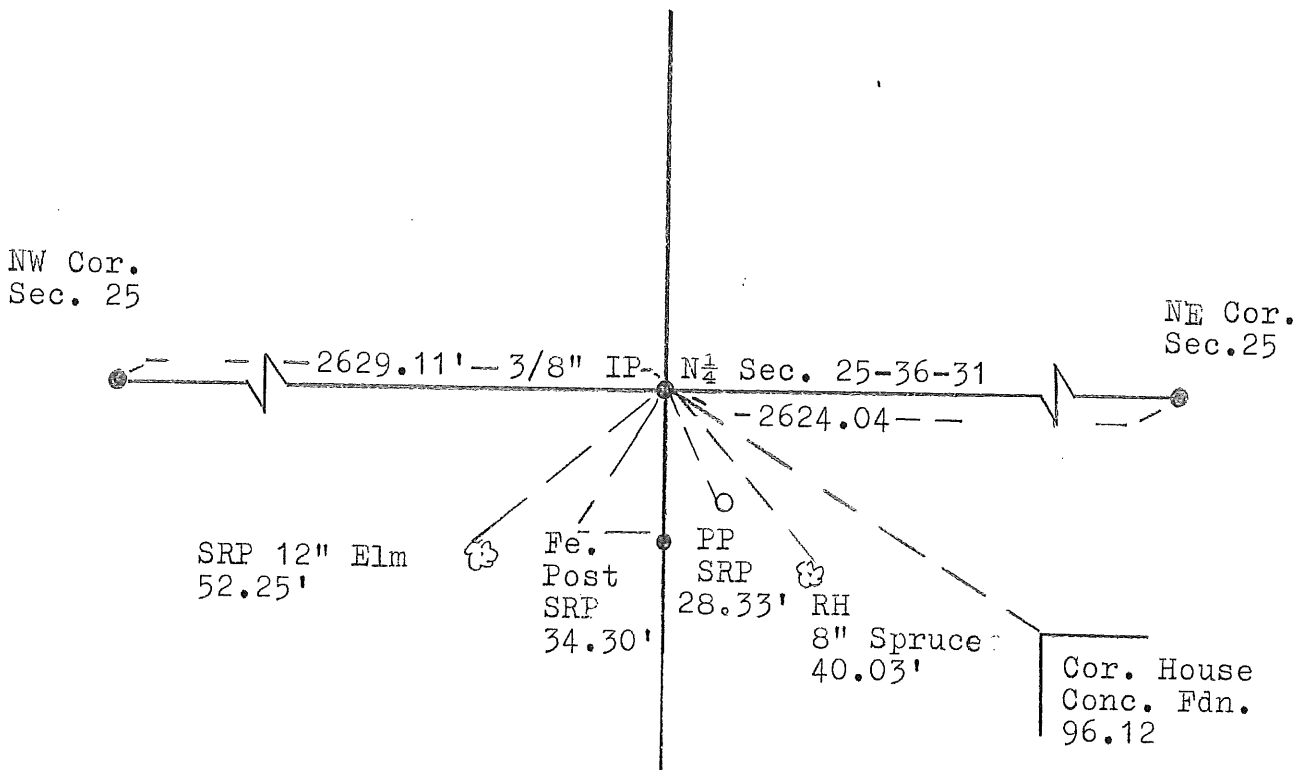
<i>CITY VIEW (CIM)</i>	1/24/2000	Paul Wellen
<i>GARDEN BROOK</i>	1/19/2000	Paul Wellen
<i>STUART ADDITION (IRON PIN IN CON)</i>	7/24/1998	Paul Wellen
<i>STONE RIDGE</i>	1/19/2000	Paul Wellen
<i>STONE RIDGE PLAT 2</i>	5/4/2001	Paul Wellen
<i>SAUK RAPIDS INDUSTRIAL PARK EAST</i>	5/10/1988	Vernon Bartz

- 1850 Original US General Land Office survey set a wood post for this location and bearing trees were recorded.
 14" Bur Oak N 56 E 354 links
- 1913 County Surveyor's Record Book, pages 30 and 32, contains a survey in Section 25 by J. A. Stanton. Survey shows corner being established at the lost position, 2619 feet from each section corner, with stake set with spike in top.
- 1938 County Engineer's Notebook No. 110 and County Surveyor's Record Book 1, page 285, shows a 2" hub at the corner in east-west road and fence lines north-south. Ties:
 12" Box Elder S 45.3'
 12" Box elder SE 73.55'
 Stationing gives distance of 2620.9 feet to the NE corner.
- Undated Roll E3, of the MN/DOT Road Alignment Plans note the assumed corner is at the intersection of roads east/west and a fence line south. It notes a distance of 2629.9 feet to the NW corner and the following reference ties:
 15" Elm SW 52.2
 12" Elm SE 45.8
 FP S 34.3
- 1972 William Lunser, LS 9394, found a 3/8" iron pin in place and established reference ties with Certificate of Location (#133433) recorded. Gives distances of 2624.04 feet to the NE corner and 2629.11 feet to the NW corner. (Note: Ties to "SRP's" in Elm to the SW and FP south fit MN/DOT ties.)
- 1986 Paul Wellen, LS 10461, notes in his Book 49, page 16, a cast iron monument.
- 2001 Westwood Professional Services, Inc. found a 3/8" iron pipe at the intersection of the centerline of 15th Street NE (running east and west) and a fence line from the south. We also found existing blazes with possible nails in the trunk of Lunser's tree ties. We removed the 3/8" iron pipe and set a cast iron monument at that location. We established new reference ties. The pipe fit reasonably well with Lunser's ties and distances to section corners.
- 2002 Found CIM to be 15.72 feet south and 2.73 feet west of the lost position, measuring 2624.30 feet to the NE corner and 2629.53 feet to the NW corner. Corner position can probably be accepted as an obliterated position since 1938, with the position being within reasonable tolerance of the 1913 set position.
 County Coordinates obtained by GPS to CIM:
 NAD 83 (1996 Adjustment)
 N- 110594.215
 E- 476166.219
- 2008 Westwood Professional Services, Inc. found a cast iron monument fitting 1972 Lunser ties and consistent with our 2001 and 2002 information. CIM is accepted as marking the obliterated position for this corner. Coordinates obtained by GPS coincide with 2002 position.

CERTIFICATE OF LOCATION OF GOVERNMENT CORNER

I hereby certify that on the 4th day of February, 1972
I did Find _____ the North Quarter corner of Section 25,
Twp. 36, Rg. 31, Benton County, Minnesota, which
was evidenced by ~~XXXXXX~~ a 3/8" iron pin found in place

I further certify that in order to perpetuate said corner I did
at the exact location thereof place a permanent marker consisting
of _____ Left as it was _____ and that
I did establish witness or reference monuments as shown below:



RH: Redhead (spike)
SRP: State Reference Point (Nail & Disc)

133433

I hereby certify that the above is true and correct and that I am a registered Land Surveyor under the laws of the State of Minnesota.

William F. Jensen

Minn. Registration No. 9394

Office of the Register of Deeds,
Benton County, Minn.

I hereby certify that the within instrument was filed for record in this office on the 9th day of February, 1973.

J. A. Johnson
Register of Deeds

By Marilyn Novak Deputy.