

Certified, Filed and or Recorded on
Dec. 16, 2008 AT 01:52PM

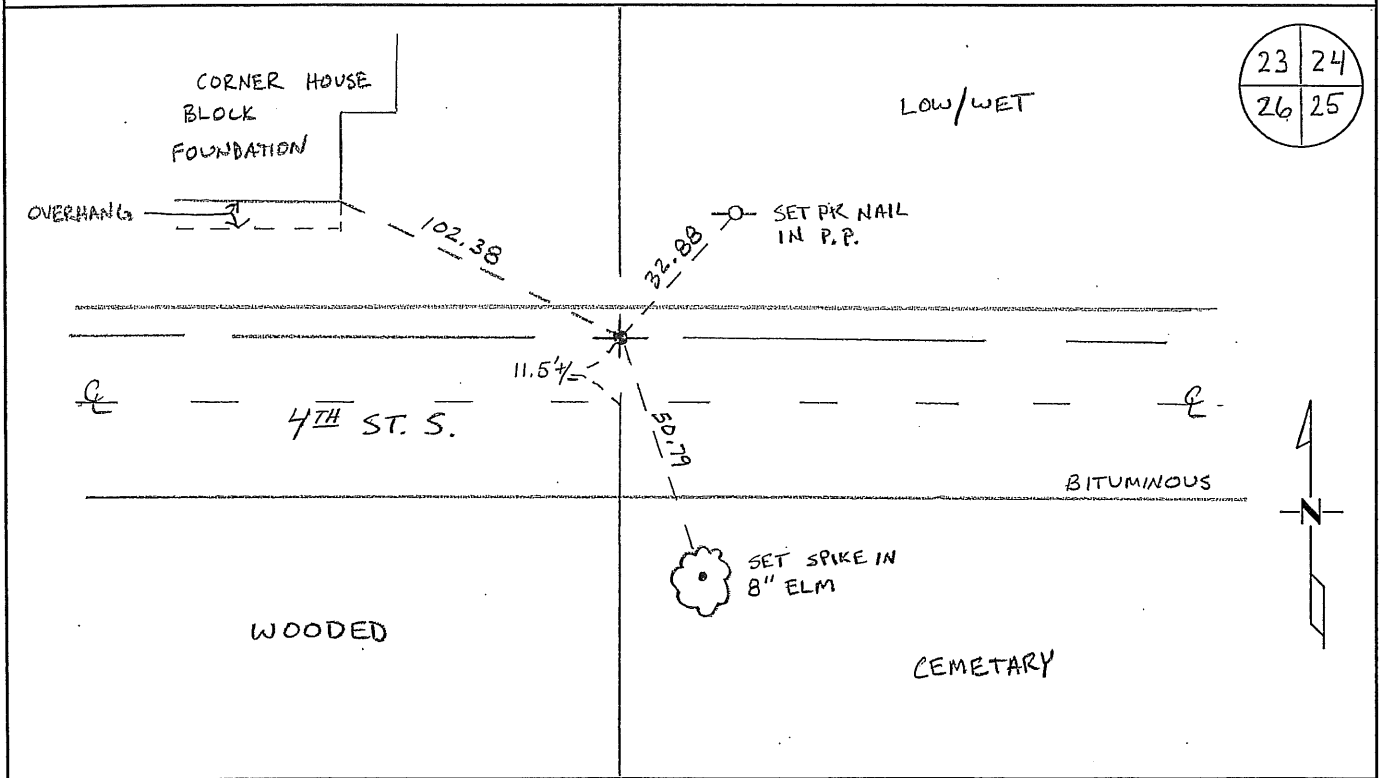
Signed: BW
MARILYN J NOVAK RG V
BENTON COUNTY MINNESOTA
MARILYN J NOVAK
COUNTY RECORDER

CERTIFICATE OF LOCATION OF GOVERNMENT CORNER

NORTHEAST Corner of Section 26, Township 36N, Range 31W
4TH Principal Meridian, State of Minnesota, County of Benton

At the corner location shown on the sketch:

- On 12/1/08 found a PK NAIL FLUSH WITH ROAD SURFACE
- left monument as found lowered monument removed monument (explain)
- On _____ placed an _____



23	24
26	25

Statement of evidence for this corner location is on back of this page.

I hereby certify that this document was researched and prepared by me or under my direct supervision and that I am a licensed Land Surveyor under the laws of the State of Minnesota.

Signature M. Henn
Deputy Benton County Surveyor
License No. 46170

Date: 12/12/08

Benton County Surveyor's Office
 Nancy H. Lewis, Deputy County Surveyor
 Minnesota License No. 46170

Page 1 of 2

Statement of Evidence:

M262

Northeast Corner of Section 26, Township 36 North, Range 31 West, Sauk Rapids Township, 4th Principal Meridian, Benton County, Minnesota.

- 1850 Original US General Land Office survey set a wood post for this location and bearing trees were recorded.
- | | | |
|-------------|------------|-----------|
| 10" Bur Oak | S 46 1/2 W | 226 links |
| 10" Bur Oak | S 31 E | 315 links |

This corner is noted on the following recorded plats:

<i>BLATTNER'S ADDITION</i>	11/23/1953	M.B. Lang
<i>OAK CREST PLAT 2</i>	10/4/2000	Paul Wellen
<i>DAMAUN ADDITION</i>		Paul Wellen
<i>GOOD SHEPHERD LUTHERAN HOME OF SAUK RAPIDS</i>	8/7/1962	H.G. Elletson
<i>SACRED HEART CEMETARY</i>	5/17/1924	R.E. Borrowman
<i>SAUK RAPIDS INDUSTRIAL PARK EAST (CIM)</i>	5/10/1988	Vernon Bartz
<i>SAUK RAPIDS INDUSTRIAL PARK SOUTH (CIM)</i>	11/22/1994	Kenneth Holmbeck
<i>STAGER'S ADDITION TO SAUK RAPIDS</i>		

- 1938 County Engineer's Notebook No. 110 shows corner as a 2" hub on north-south fence marking the village limits of Sauk Rapids. Ties:
- | | | | | | |
|---------|---|-------|--------|----|-------|
| Cor. FP | N | 31.8' | 6" Oak | NW | 77.9' |
|---------|---|-------|--------|----|-------|

Undated Roll E3, of the MN/DOT Road Alignment Plans for TH 10, notes an Iron Pipe in place and replaced with a cast iron monument by Carley Engineering Co.

- 1972 William Lunser, LS 9394, found a cast iron in place and left it as is. A Certificate of Location (Doc. #133437) was filed. Gives distance of 2629.11 feet to the North ¼ corner of Section 25.
- 1983 William Lunser found a cast iron monument at the East 1/4 corner of Section 26-36-31 which measured 2627.48 feet south of the NE corner. A Certificate of Location (#173419) was filed.
- 1994 Central Minnesota Land Surveying found a 1/4" iron pipe and 2 of Lunser's ties that fit the iron location.
- 1995 Comstock and Davis performed GPS work under contract with Benton County and Coordinates Obtained by GPS NAD 83 (1986 Adjustment) to a ½ " iron pipe:
- | | |
|----|------------|
| N- | 110590.529 |
| E- | 473537.270 |

Benton County Surveyor's Office
Nancy H. Lewis, Deputy County Surveyor
Minnesota License No. 46170

Page 2 of 2

2002 Westwood Professional Services, Inc. found a PK nail at the apparent position and measured 2627.71 feet to the East $\frac{1}{4}$ corner of Section 26, which compared well with Lunser's distance in 1983.

County Coordinates Obtained by GPS to PK Nail:

NAD 83 (1996 Adjustment)

N-110590.609

E- 473536.688

Appears PK nail had been set at former CIM position.

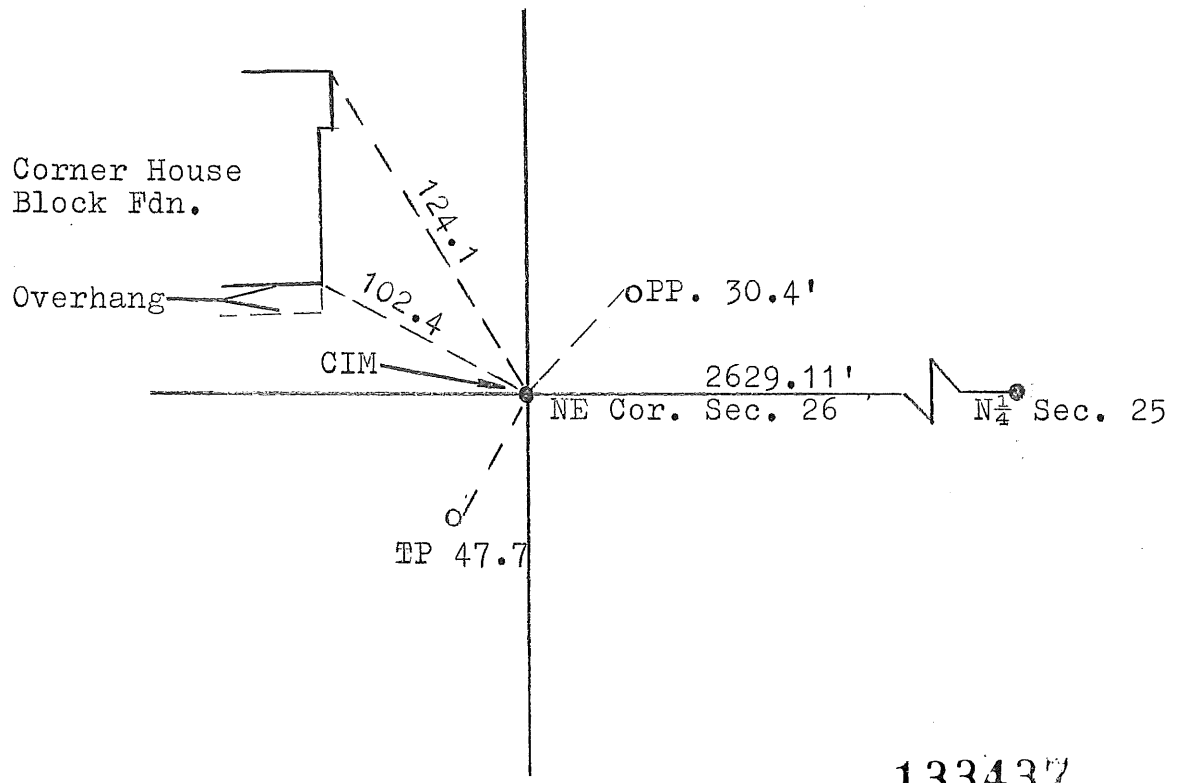
2008 The County Surveyor's Office searched and found a PK nail 11.5± feet north of the centerline of an east-west road (4th Street South). The position gives a distance of 2627.68 feet to the East $\frac{1}{4}$ Cor., and a distance of 2629.48 feet to the North $\frac{1}{4}$ Cor. of Sec. 25, which compares well with Lunser's 1972 and 1983 reports to same. Surveyor accepts the position of the PK nail and updated ties. The 2002 coordinates were verified.

Sauk Rapids

CERTIFICATE OF LOCATION OF GOVERNMENT CORNER

I hereby certify that on the 4th day of February, 1972
I did find _____ the Northeast corner of Section 26,
Twp. 36, Rg. 31, Benton County, Minnesota, which
was evidenced by a Cast Iron Monument found in place

I further certify that in order to perpetuate said corner I did
at the exact location thereof place a permanent marker consisting
of Left as it was and that
I did establish witness or reference monuments as shown below:



I hereby certify that the above is true and correct and that I am a registered Land Surveyor under the laws of the State of Minnesota.

William T. Lane

Minn. Registration No. 9394

Office of the Register of Deeds,
Benton County, Minn.

I hereby certify that the within instrument was filed for record in this office on the 9th day of February, 1973.

J. A. Johnson
Register of Deeds

By Marilyn Novak Deputy.