

# CERTIFICATE OF LOCATION OF GOVERNMENT CORNER

North east Corner of Section 35, Township 36, Range 31, \_\_\_\_\_ P.M.

STATE OF MINNESOTA, County of Benton

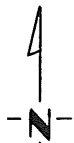
At the corner location shown on the sketch:

On 3-21-81 found a 3/4 inch iron pipe  
DATE

left monument as found,  lowered monument,  removed monument (explain)

On 3-21-81 placed a Benton Co. cast iron monument  
DATE

### SKETCH OF REFERENCE TIES



*Refer to next page*

Statement of evidence relative to this corner location is on back of page.

I hereby certify that this document and the data contained herein was prepared by me or under my direct supervision.

William F. Lunsen 3-21-81  
SIGNATURE DATE

Registration No. 9394

Land Surveyor,  Professional Engineer

County Surveyor,  County Engineer

County Recorder  
OFFICE OF THE REGISTER OF DEEDS  
County of Benton

I hereby certify that this document was filed in the Reg. of Deeds office at 3 P. M. on the 7th day of April A.D., 1981

County Recorder  
Register of Deeds F. A. Johnson

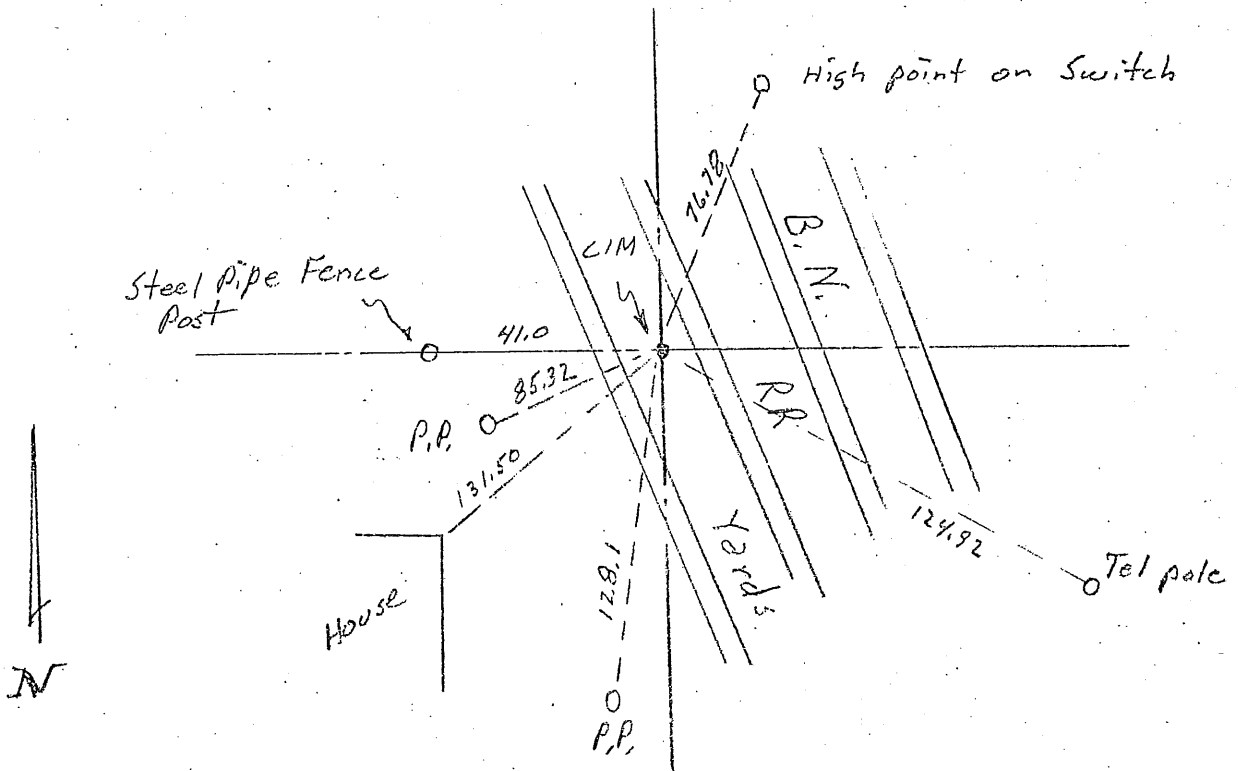
By \_\_\_\_\_, Deputy

DOCUMENT NO. \_\_\_\_\_

# CERTIFICATE OF LOCATION OF GOVERNMENT CORNER

I hereby certify that on the 20th day of March, 1981  
 I did find the Northeast corner of Section 35,  
 Twp. 36, Rg. 31, Benton County, Minnesota, which  
 was evidenced by 3/4 inch iron pipe

I further certify that in order to perpetuate said corner I did  
 at the exact location thereof place a permanent marker consisting  
 of Benton County cast iron monument and that  
 I did establish witness or reference monuments as shown below:



158858

I hereby certify that the  
 above is true and correct  
 and that I am a registered  
 Land Surveyor under the laws  
 of the State of Minnesota.

*William P. Jensen*

Minn. Registration No. 9394

Office of the County Recorder  
Benton County, Minn.

I hereby certify that the within  
 instrument was filed for record  
 in this office on the 7th day of  
April, 1981. 3 P.M.

*J.A. Johnson*  
 County Recorder

By \_\_\_\_\_ Deputy.