

Certified, Filed and or Recorded on
May 06, 2008 AT 01:23PM

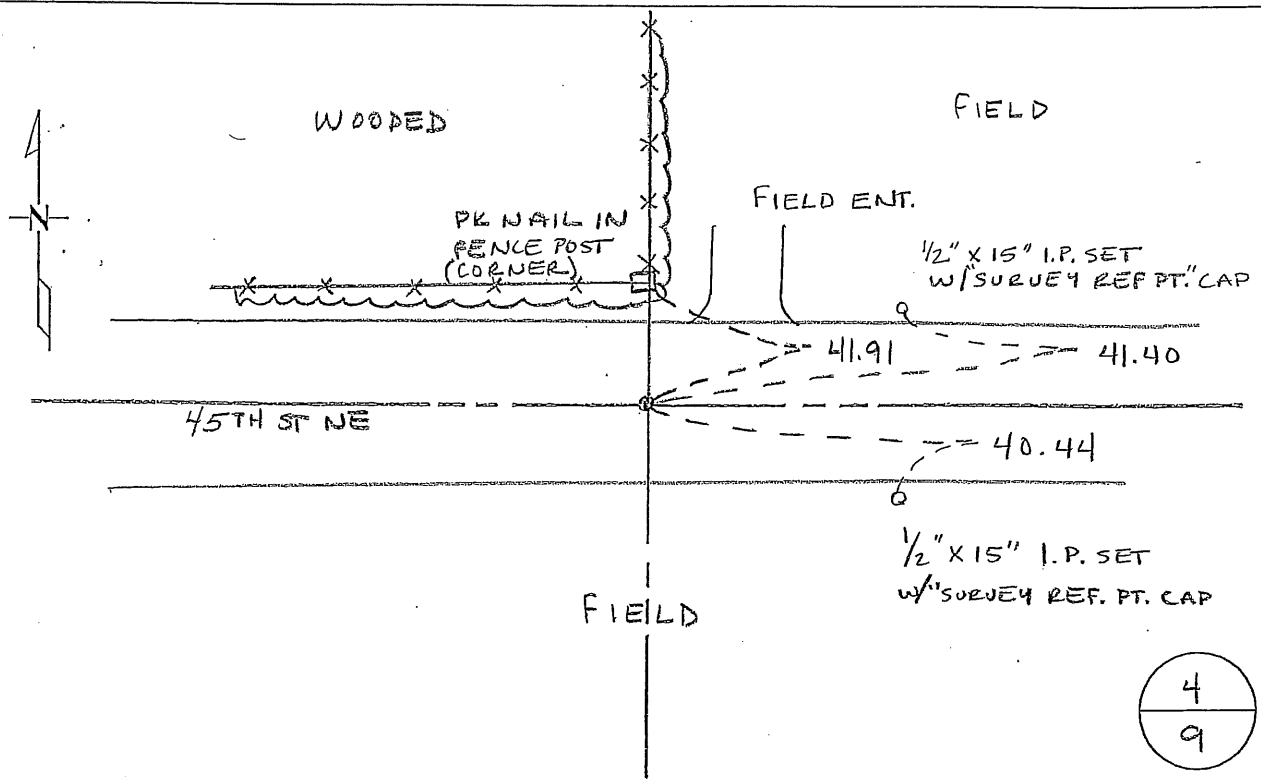
Signed: [Signature]
MARILYN J NOVAK G V ✓
BENTON COUNTY MINNESOTA
MARILYN J NOVAK
COUNTY RECORDER

CERTIFICATE OF LOCATION OF GOVERNMENT CORNER

NORTH QUARTER Corner of Section 9, Township 36, Range 30
4TH Principal Meridian, State of Minnesota, County of Benton

At the corner location shown on the sketch:

- On 02 APRIL 08 found a Cast Iron Monument
DATE
- left monument as found lowered monument removed monument (explain)
- On _____ placed an _____
DATE



4
9

Statement of evidence for this corner location is on back of this page.

I hereby certify that this document was researched and prepared by me or under my direct supervision and that I am a licensed Land Surveyor under the laws of the State of Minnesota.

Signature: [Signature] Date: 06 May 2008 License No. 19552
Title: Land Surveyor Professional Engineer County Surveyor County Engineer

Benton County Surveyor's Office
 Jerome C. Wittstock, County Surveyor
 Minnesota License No. 19552

Statement of Evidence:**L091**

The North Quarter Corner of Section 9, Township 36 North, Range 30 West, Minden Township, 4th Principal Meridian, Benton County, Minnesota.

1852 Original US General Land Office survey set a wood post at the corner location and bearing trees were recorded.

6" Blk Oak	N 58 E	50 links
6" Blk Oak	S 40 3/4 E	66 links

1933 County Engineer's Notebook No. 71 contains survey of County road running west to east. Notes show corner marked by a hub set in center of road with fence line north. Ties:

Cor. F.P.	N	28.3'
10" R. Oak	NW	50.3'

Stationing gives distances of 2666.8 feet to the NE corner and 2648.7 feet to the NW corner with a delta angle of 0-20' right.

1964 County Surveyor's Record Book 1, page 177, notes the following reference ties to an iron:

24" R Oak	WNW	100.0
30" R Oak	WNW	108.8

1982 David Regan, LS 12236, found a 1/2" solid iron pin in the centerline of east/west road and in a fence line north. He set a cast iron monument over the iron and filed a Certificate of Location (#162590). Fits 1964 ties.

2004 County Coordinates obtained from GPS by BWK to CIM:

NAD 83 (1996 Adjustment)

N- 126812.374

E- 492072.190

Distances: 2664.11 feet to the NE corner
 2651.03 feet to the NW corner
 delta = 0-18'-43" right

2008 Westwood Professional Services, Inc. found a CIM at the centerline of east/west bituminous road on a fence line to the north.

County Coordinates obtained by GPS

NAD 83 (1996 Adjustment)

N- 126812.374

E- 492072.190

CERTIFICATE OF LOCATION OF GOVERNMENT CORNER

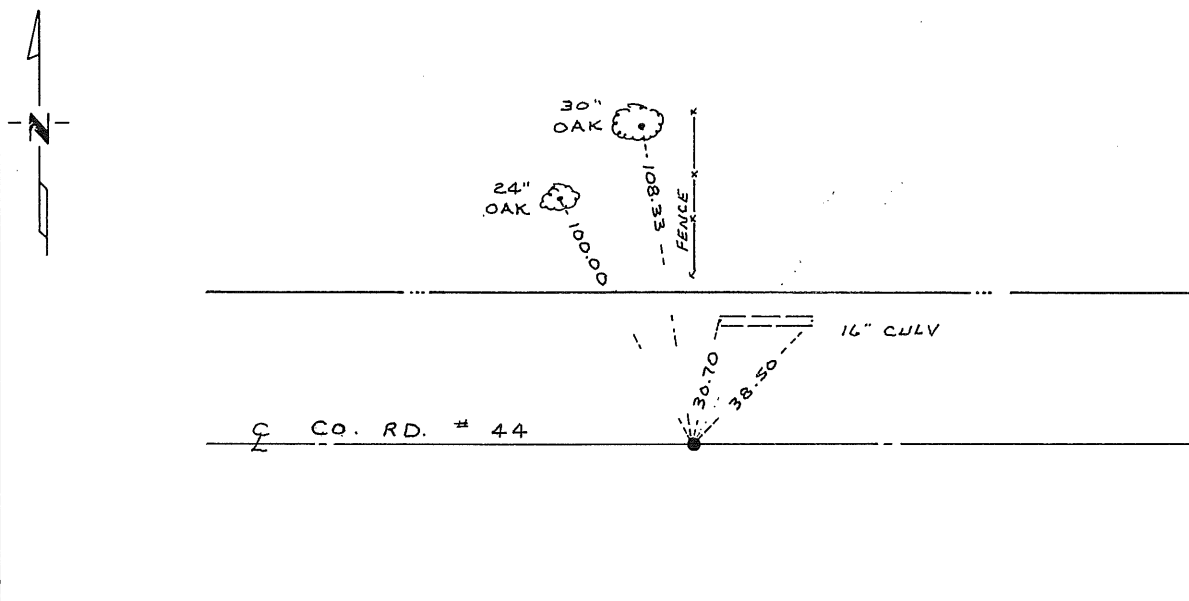
North Quarter Corner of Section 9, Township 36, Range 30, 4th P.M.

STATE OF MINNESOTA, County of Benton

At the corner location shown on the sketch:

- On 6/21/82 found a 1/2 inch solid iron in center line of east-west County road and on fence line north
DATE
 - left monument as found, lowered monument, removed monument (explain)
- On 6/21/82 placed a Benton County cast iron monument
DATE

SKETCH OF REFERENCE TIES



Statement of evidence relative to this corner location is on back of page.

I hereby certify that this document and the data contained herein was prepared by me or under my direct supervision.

David S. Ryan 7/13/82
SIGNATURE DATE

Registration No. 12236

- Land Surveyor, Professional Engineer
- County Surveyor, County Engineer

OFFICE OF THE REGISTER OF DEEDS County Recorder
 County of Benton

I hereby certify that this document was filed in the Reg. of Deeds office at 10 A.M. on the 27th day of July A.D., 1982

Register of Deeds F.A. Johnson
County Recorder

By _____, Deputy

DOCUMENT NO. 162590