

CERTIFICATE OF LOCATION OF GOVERNMENT CORNER

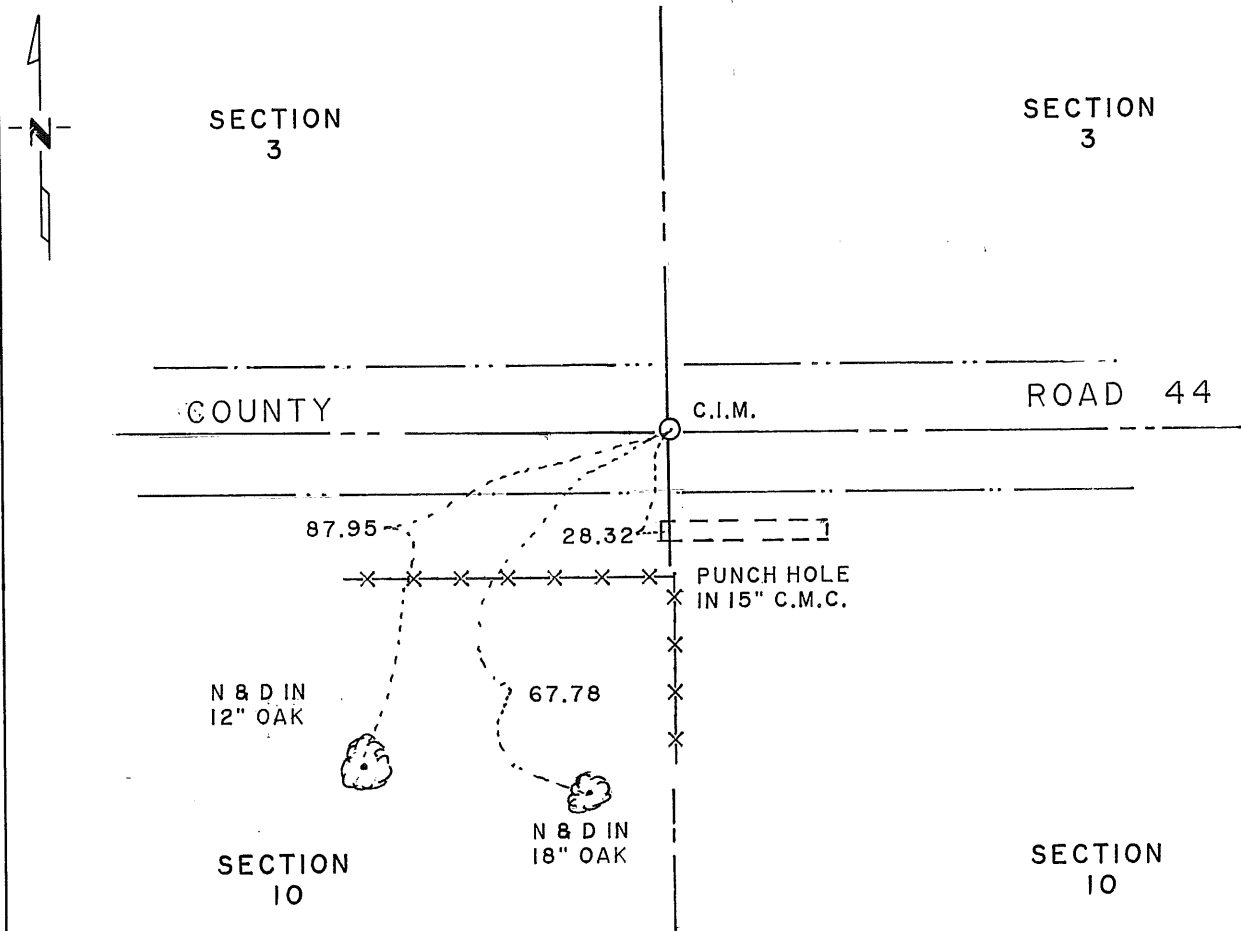
NORTH QUARTER Corner of Section 10, Township 36, Range 30, 4TH P.M.

STATE OF MINNESOTA, County of BENTON

At the corner location shown on the sketch:

- On _____ found a _____
DATE
- left monument as found, lowered monument, removed monument (explain)
- On 5/24/89 placed a Cast Iron Monument in centerline of C.R. # 44 on
DATE
fence line south from Beton County ties

SKETCH OF REFERENCE TIES



Statement of evidence relative to this corner location is on back of page.

I hereby certify that this document and the data contained herein was prepared by me or under my direct supervision.

David A. Regan 10/30/89
SIGNATURE DATE

Registration No. 12236

- Land Surveyor, Professional Engineer
- County Surveyor, County Engineer

OFFICE OF THE REGISTER OF DEEDS

County of _____

I hereby certify that this document was filed in the Reg. of Deeds office at _____ .M. on the _____ day of _____ A.D., 19 _____

Register of Deeds _____

By _____, Deputy

DOCUMENT NO. _____

Statement of Evidence:

The G.L.O. survey was done in September, 1852 by Edwin James.

County records dated 1964 shows a iron with ties

On 5/24.89, David P. Regan Land Surveying, Inc. searched the area and found one county tie.

The corner was established in the centerline of the County Road and the distance from the one existing tie and a Cast Iron Monument was set.

195018

OFFICE OF
BENTON COUNTY RECORDER
BENTON COUNTY, MO
CERTIFIED TO BE FILED
AND/OR RECORDED ON

Nov 2 4 23 PM '89

ALICE G. ENGELMEYER
COUNTY RECORDER

BY *[Signature]* DEPUTY