

Certified, Filed and or Recorded on
Feb. 12, 2010 AT 12:51PM

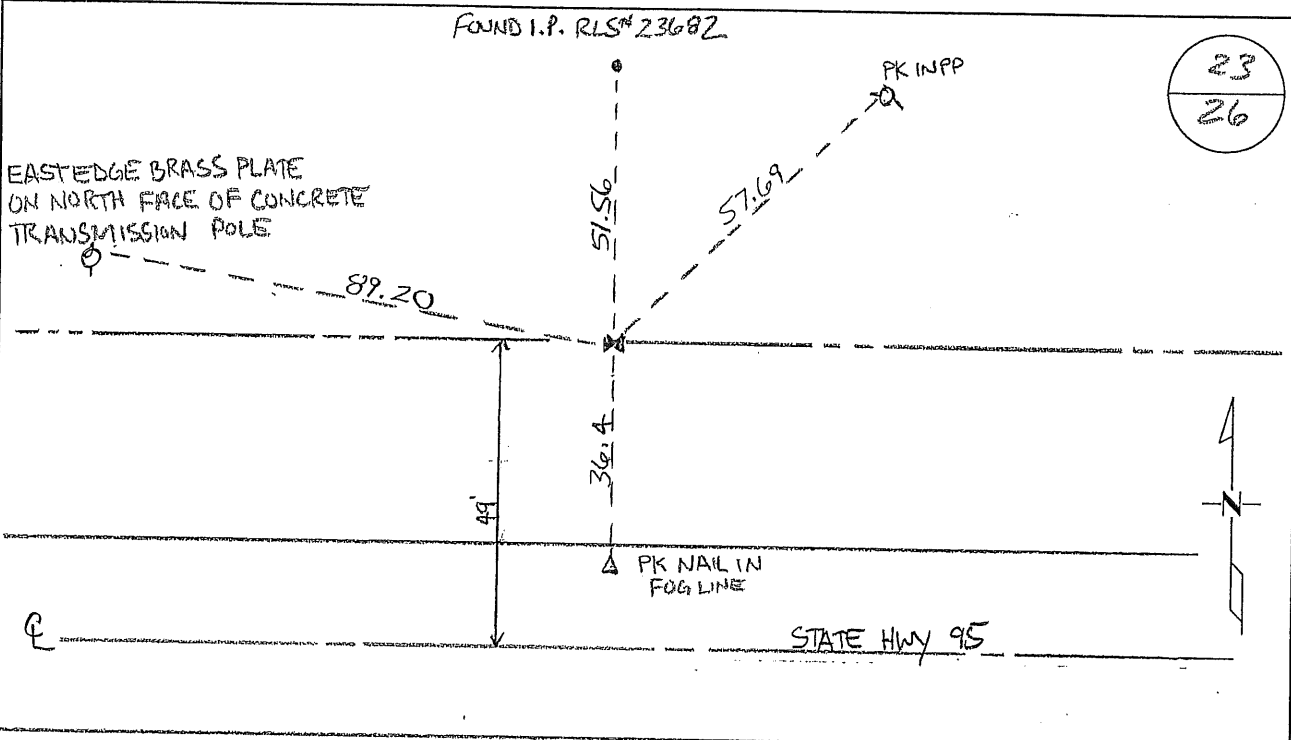
Signed: MJ
MARILYN J NOVAK G V I
BENTON COUNTY MINNESOTA
MARILYN J NOVAK
COUNTY RECORDER

CERTIFICATE OF LOCATION OF GOVERNMENT CORNER

NORTH QUARTER Corner of Section 26, Township 36, Range 30
4TH Principal Meridian, State of Minnesota, County of Benton

At the corner location shown on the sketch:

- On 08/26/09 found a CAST IRON MONUMENT
- left monument as found lowered monument removed monument (explain)
- On _____ placed an _____



Statement of evidence for this corner location is on back of this page.

I hereby certify that this document was researched and prepared by me or under my direct supervision and that I am a licensed Land Surveyor under the laws of the State of Minnesota.

Signature Jerome C. Wittstock
Benton County Surveyor
License No. 19552

Date: 02/05/2010

Benton County Surveyor's Office
 Jerome C. Wittstock, County Surveyor
 Minnesota License No. 19552

Statement of Evidence:**L261**

North Quarter Corner of Section 26, Township 36 North, Range 30 West, Minden Township, 4th Principal Meridian, Benton County, Minnesota.

1852 Original General Land Office survey established this corner and set a wood post at this location and bearing trees were recorded.

8" Bur Oak	N 14 3/4 W	52 links
6" Bur Oak	S 8 1/4 E	61 links

1940's MN/DOT road alignment map (File No. 33-18) notes the corner at fence line north and west and 50.5 ft north of the centerline of TH 95.

1977 Paul Wellen, LS 10461, found a wood post at the intersection of a fence line north/south/east/west and replaced it with a 1/2" pipe. He filed a Certificate of Location (#147247).

1992 James Nielsen, LS 11865, found a 1/2" pipe and a fence line north/south/east/west. He filed a Certificate of Location (#216761).
 County Coordinates obtained from MN/DOT
 NAD 83 (1986 Adjustment)
 N- 110641.427
 E- 502869.554

2004 Danny Kron, LS 42621, searched corner area and found no evidence of the pipe as the area had been graded. He reset the corner from previous survey information and one tie from Nielson's Certificate. He measured 2647.35 feet to NW corner and 2672.72 feet to the NE corner.
 County Coordinates obtained by traverse by Surveying & Engineering Professionals, Inc.
 NAD 83 (1996 Adjustment)
 N- 110642.803
 E- 502869.149

2005 Note: MN/DOT plans to reset corner from 1992 coordinates, which is within a foot of the corner set by Kron. Mr. Kron has agreed.
 County Coordinates from 1994 location
 NAD 83 (1996 Adjustment)
 N- 110641.641
 E- 502869.361

2009 Westwood Professional Services, Inc. found a CIM and measured 2672.66 feet to the NE corner of Section 26 and 2647.69 feet to the NW corner of Section 26. CIM location agrees with 2005 coordinate position. Reference ties were established.

CERTIFICATE OF LOCATION OF GOVERNMENT CORNER

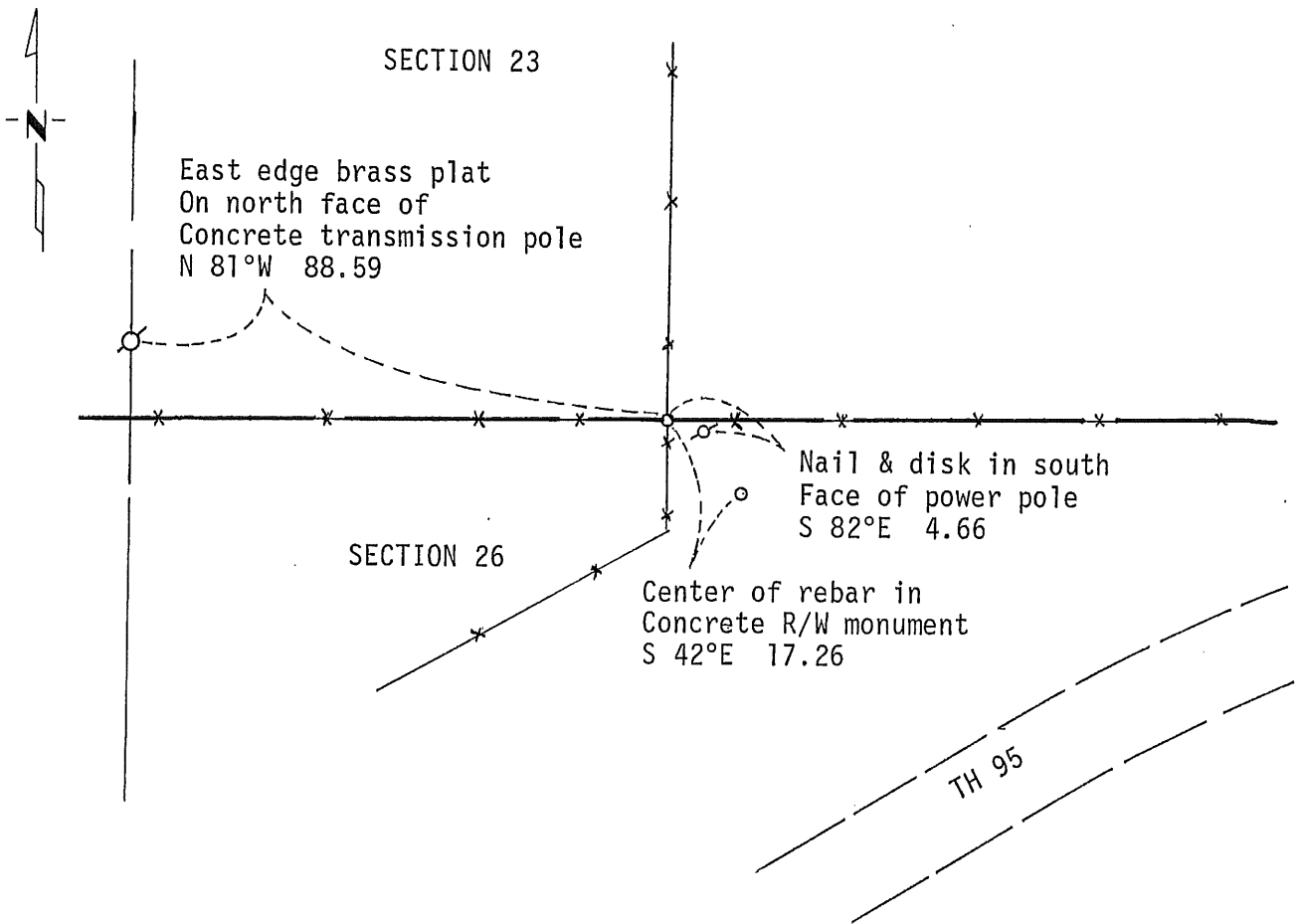
NORTH QUARTER Corner of Section 26, Township 36N, Range 30W, 4th P.M.

STATE OF MINNESOTA, County of Benton

At the corner location shown on the sketch:

- On 04/16/92 found a 1/2 inch pipe
DATE
- left monument as found, lowered monument, removed monument (explain)
- On _____ placed a _____
DATE

SKETCH OF REFERENCE TIES



Statement of evidence relative to this corner location is on back of page.

I hereby certify that this document and the data contained herein was prepared by me or under my direct supervision.

James W. Nielsen 1/7/1993
SIGNATURE DATE

Registration No. 11865

- Land Surveyor, Professional Engineer
- County Surveyor, County Engineer

OFFICE OF THE COUNTY RECORDER

County of _____

I hereby certify that this document was filed in the Co. Recorders office at _____ .M. on the _____ day of _____ A.D., 19 _____

County Recorder _____

By _____, Deputy

DOCUMENT NO. _____

Statement of Evidence: NORTH QUARTER CORNER SECTION 26, TOWNSHIP 36 NORTH,
RANGE 30 WEST

Reference: Certificate of Location Document #147247 filed 01/17/78
by Paul Wellan.

On 04/16/92 Mn/DOT recovered Mr. Wellan's 1/2 inch pipe and all of the
reference ties.

The found monument agrees with the occupation line and has been accepted
by other local surveyors as the location for the corner. The found
monument is accepted by Mn/DOT as the correct location for the corner.

For details and survey analysis contact the Minnesota Department of
Transportation Surveys Section in Baxter, MN.

216761

OFFICE OF
BENTON COUNTY RECORDER
BENTON COUNTY, MN
CERTIFIED TO BE FILED
AND FOR RECORD ON

AUG 3 4 08 PM '93

ALICE C. ENGELMEYER
COUNTY RECORDER

BY *[Signature]* DEPUTY

CERTIFICATE OF LOCATION OF GOVERNMENT CORNER

North 1/4 Corner of Section 26, Township 36, Range 30, 4th P.M.

STATE OF MINNESOTA, County of Benton

At the corner location shown on the sketch:

On 9-12-77 found a Found Wood Post and replaced with 1/2" iron pipe
DATE

left monument as found, lowered monument, removed monument (explain)

On _____ placed a _____
DATE

SKETCH OF REFERENCE TIES



Refer to next page

Statement of evidence relative to this corner location is on back of page. #147247

I hereby certify that this document and the data contained herein was prepared by me or under my direct supervision.

Paul E. Wellen 1/9/78
SIGNATURE DATE

Registration No. 10461

- Land Surveyor, Professional Engineer
 County Surveyor, County Engineer

OFFICE OF THE REGISTER OF DEEDS
County of Benton

I hereby certify that this document was filed in the Reg. of Deeds office at 4 P: .M. on the 10th day of January A.D., 19 78

Register of Deeds F. A. Johnson

By A.E., Deputy

DOCUMENT NO. _____

CERTIFICATE OF LOCATION OF GOVERNMENT CORNER

NORTH 1/4 Corner of Section 26, Township 36N, Range 30W, 4TH P.M.

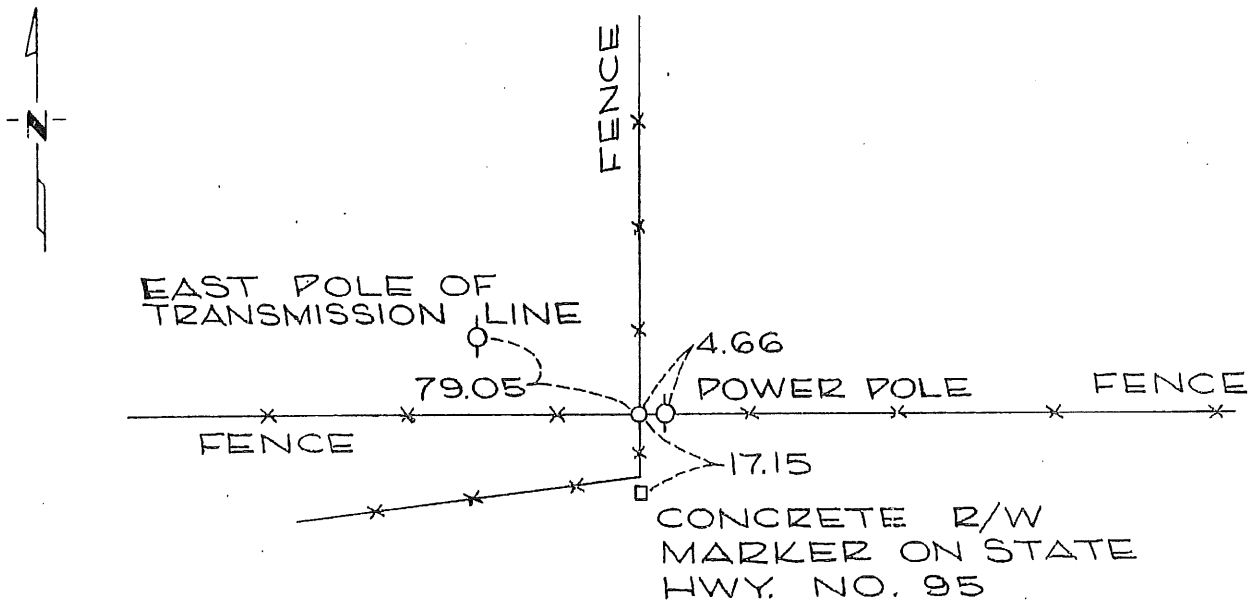
STATE OF MINNESOTA, County of BENTON

At the corner location shown on the sketch:

On 9-12-77 found a FOUND WOOD POST AND
DATE
REPLACED WITH 1/2" IRON PIPE
 left monument as found, lowered monument, removed monument (explain)

On _____ placed a _____
DATE

SKETCH OF REFERENCE TIES



Statement of evidence relative to this corner location is on back of page. 147247

I hereby certify that this document and the data contained herein was prepared by me or under my direct supervision.

Paul J. Miller 11/9/78
SIGNATURE DATE

Registration No. 10461
 Land Surveyor, Professional Engineer
 County Surveyor, County Engineer

OFFICE OF THE REGISTER OF DEEDS

County of Benton

I hereby certify that this document was filed in the Reg. of Deeds office at 4 P. M. on the 10th day of January A.D., 1978

Register of Deeds A. E. Johnson

By A. E. Johnson, Deputy

DOCUMENT NO. _____

Found the remains of a wood post at the intersection of fence lines north, south, east and west. Left wood post and placed a $\frac{1}{2}$ inch iron pipe in the middle of ~~the~~ said post.

