

Certified, Filed and or Recorded on
Aug. 24, 2009 AT 08:15AM

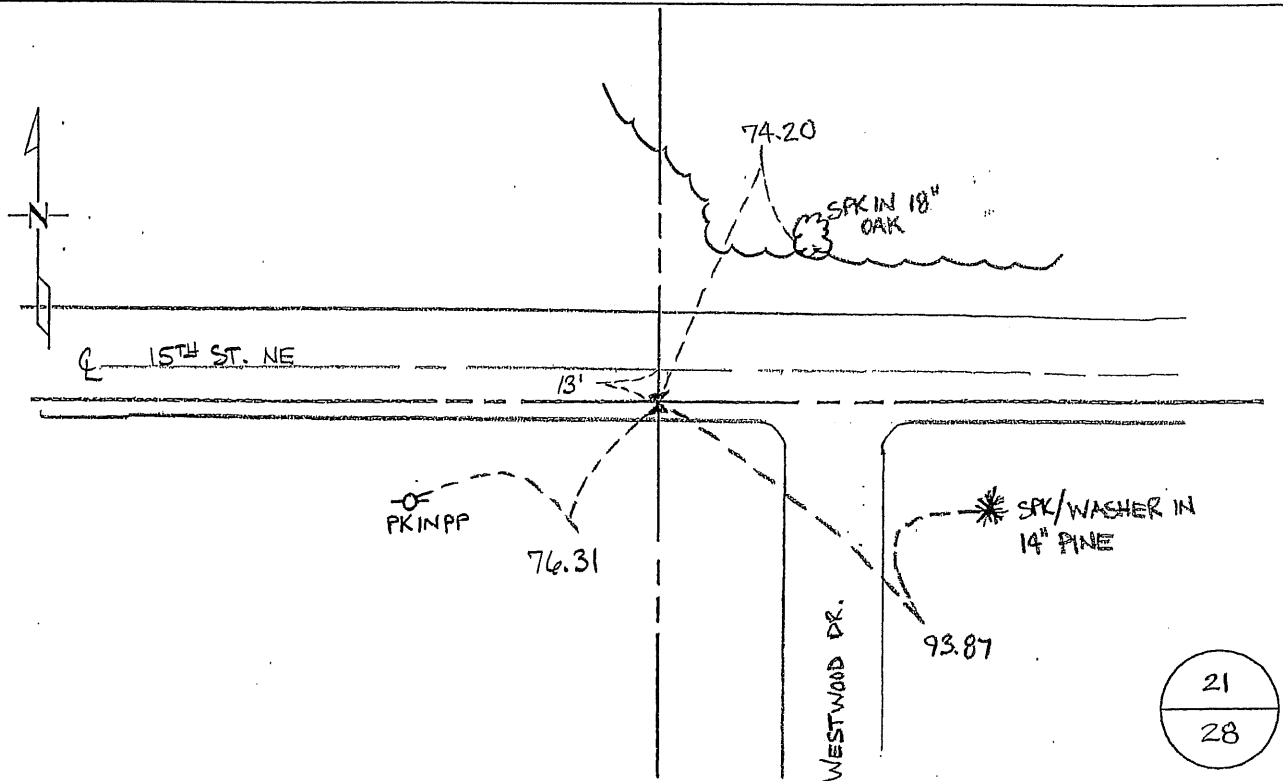
Signed: CK
MARILYN J NOVAK G V I
BENTON COUNTY MINNESOTA
MARILYN J NOVAK
COUNTY RECORDER

CERTIFICATE OF LOCATION OF GOVERNMENT CORNER

NORTH QUARTER Corner of Section 28, Township 36, Range 30
4TH Principal Meridian, State of Minnesota, County of Benton

At the corner location shown on the sketch:

- On 01 APR 2008 found a Cast Iron Monument
DATE
- left monument as found lowered monument removed monument (explain)
- On 01 Apr. 2008 placed an PK Nail with Washer
DATE



Statement of evidence for this corner location is on back of this page.

I hereby certify that this document was researched and prepared by me or under my direct supervision and that I am a licensed Land Surveyor under the laws of the State of Minnesota.

Signature: Jerome C. Wittstock Date: 20 August 2009 License No. 19552
 Title: Land Surveyor Professional Engineer County Surveyor County Engineer

Benton County Surveyor's Office
 Jerome C. Wittstock, County Surveyor
 Minnesota License No. 19552

Statement of Evidence:

L281

North Quarter Corner of Section 28, Township 36 North, Range 30 West, Minden Township, 4th Principal Meridian, Benton County, Minnesota.

- 1852 Original US General Land Office survey set a wood post at this location and bearing trees were recorded.
 5" Blk. Oak N 33 W 356 links
- 1912 County Engineer's Notebook 2, pages 101 to 104, is a road survey for SR No. 8 by M. J. Cleveland. Survey was run on section line east-west. Notes show stone found on north side of track. Ties:
 10" Box Elder S 65-30 W 70'
 14" Elm S 75 W 109.3'
 Stationing gives distances of 2691 feet to the NW corner and 2702 feet to the NE corner of Section 28.
- Undated County Surveyor's Record Book 1, page 215, shows a flat top stone with the following reference ties.
- | | | | | | |
|--------------|----|-------|----------|----|--------|
| 10" Boxelder | SW | 70' | 14" Elm | SW | 109.3' |
| Twin Oak | NE | 55.6' | Cor F.P. | N | 20.1' |

This corner is noted on the following recorded plats:

<i>WAPICADA VILLAGE</i>	<i>September 1968</i>	<i>Delbert Rieke</i>
<i>ADAM'S ACRES</i>	<i>2/23/1983</i>	<i>William Lunser</i>

- 1981 William Lunser, LS 9394, found a 1/2" iron pin. The 1/2" iron pin was found at the intersection of a line from the northwest corner through the 1/16 corner and the northerly extension of the east line of *Wapicada Village*.
- 1984 William Lunser placed a cast iron monument at the location and established reference ties. A Certificate of Location (#191257) was recorded. Corner is 12.26 feet north of the east-west centerline.
- 1990 The cast iron monument was destroyed by road construction.
- 1992 James Nielson, LS 11865, with MN/DOT found a 1/2" iron pipe and 4 of Mr. Lunser's reference ties. The monument was left as found and the reference ties were checked. A Certificate of Location (#216766) was recorded. Corner is shown on MN/DOT right of way map for TH 23 and recorded Right of Way Plat Numbers 5-6, 5-7, and 5-14.
 County Coordinates obtained from MN/DOT
 NAD 83 (1986 Adjustment)
 N- 110782.464
 E- 492242.269
- 2001 Westwood Professional Services, Inc. found a 1/2" iron monument lying over in the area of the north quarter corner. We placed a cast iron monument at the location of the 1/2" iron monument on October 21, 2001. At this location, the cast iron monument fit ties that were placed in the old blazes of the trees on Mr. Lunser's Certificate of Location of Government Corner.
- 2003 Westwood Professional Services, Inc. found a cast iron monument at the corner. We measured 2686.07 feet to the NW corner and 2669.86 feet to the NE corner.
 County Coordinates obtained by GPS (Cast Iron Monument)
 NAD 83 (1996 Adjustment)
 N-110783.076
 E-492241.876
- 2008 Westwood Professional Services, Inc. placed a pk nail and county washer over existing CIM. Established new reference ties to the corner and verified the 2003 coordinates.

CERTIFICATE OF LOCATION OF GOVERNMENT CORNER

NORTH QUARTER Corner of Section 28, Township 36W, Range 30N, 4th P.M.
STATE OF MINNESOTA, County of Benton

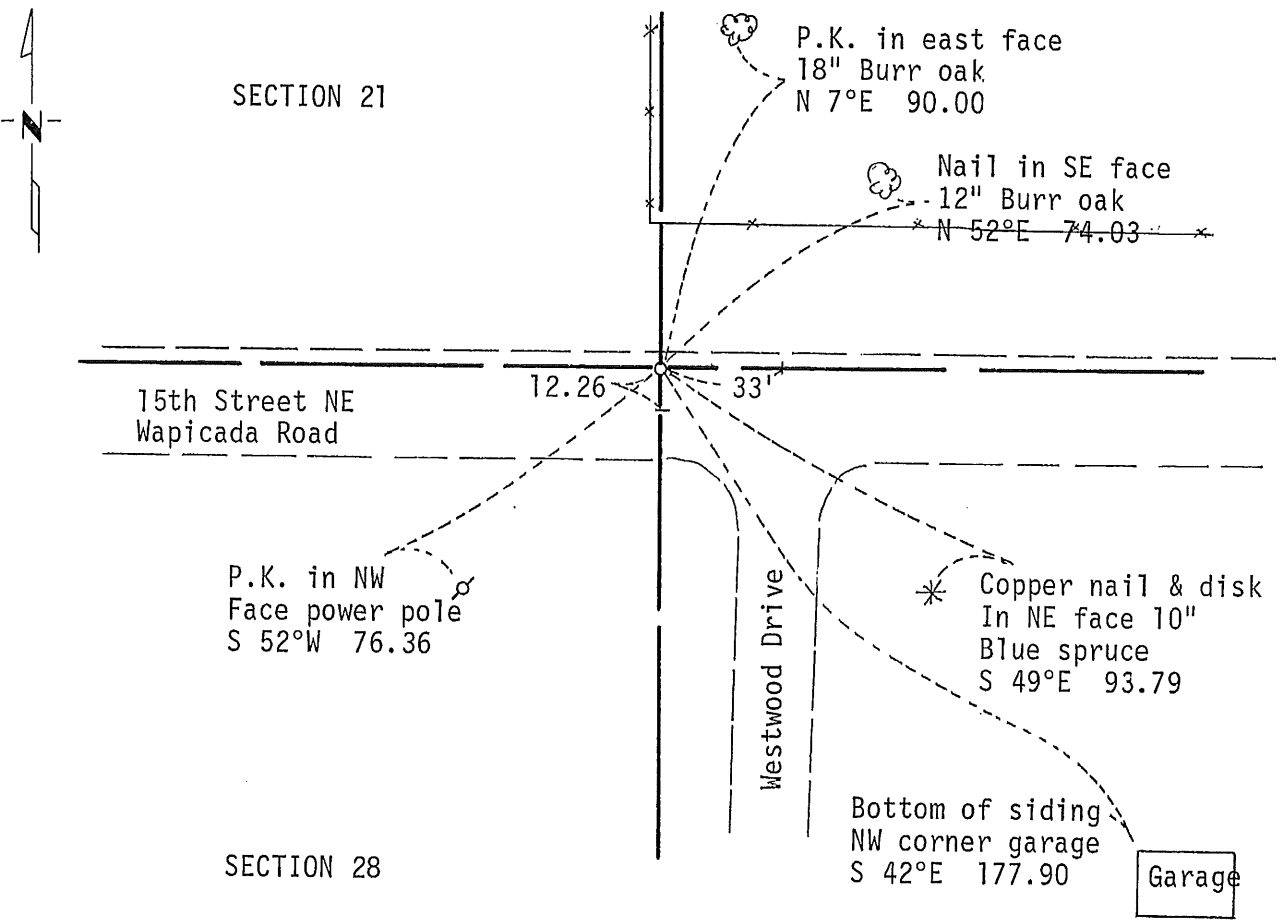
At the corner location shown on the sketch:

On 10/30/92 found a 1/2 inch pipe
DATE

left monument as found, lowered monument, removed monument (explain)

On _____ placed a _____
DATE

SKETCH OF REFERENCE TIES



Statement of evidence relative to this corner location is on back of page.

I hereby certify that this document and the data contained herein was prepared by me or under my direct supervision.

James W. Nielson 1/7/1993
SIGNATURE DATE

Registration No. 11865
 Land Surveyor, Professional Engineer
 County Surveyor, County Engineer

OFFICE OF THE COUNTY RECORDER
County of _____

I hereby certify that this document was filed in the Co. Recorders office at _____ .M. on the _____ day of _____ A.D., 19 _____

County Recorder _____
By _____, Deputy

DOCUMENT NO. _____

Statement of Evidence: NORTH QUARTER CORNER SECTION 28, TOWNSHIP 36 NORTH,
RANGE 30 WEST

Reference: Certificate of Location document by William Lunser dated
12/15/88.

On 10/30/92 Mn/DOT recovered a 1/2 inch pipe (flush) and four of Mr.
Lunser's reference ties. Mr. Lunser had set a cast iron monument in
1984 from monuments found at the northwest corner of Section 28 and
the North 1/16th corner of the Northwest Quarter of Section 28. The
cast iron monument was destroyed by road construction in 1990. This
location also agrees with the plat of Wapicada Village.

The found monument is accepted by Mn/DOT as the correct location for
the corner.

For details and survey analysis contact the Minnesota Department of
Transportation Surveys Office in Baxter, MN.

216766

OFFICE OF
BENTON COUNTY RECORDER
BENTON COUNTY, MN
CERTIFIED TO BE FILED
AND/OR RECORDED ON

AUG 3 4 08 PM '93

ALICE G. ENGELMEYER
COUNTY RECORDER

BY *[Signature]* DEPUTY

CERTIFICATE OF LOCATION OF GOVERNMENT CORNER

North 1/4 Corner of Section 28, Township 36, Range 30, 4th P.M.

STATE OF MINNESOTA, County of Benton

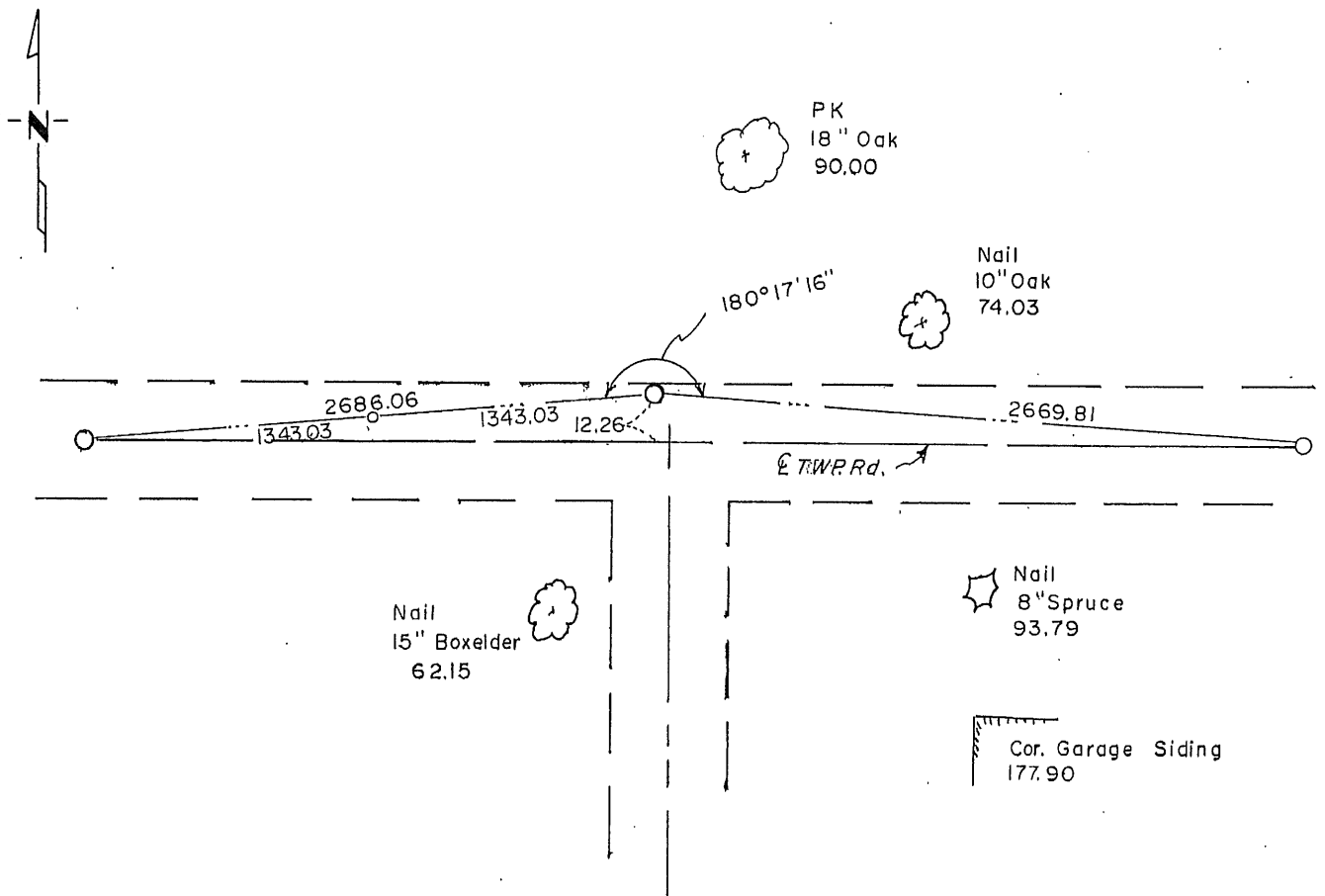
At the corner location shown on the sketch:

On 5-14-81 found a 1/2" iron pin
DATE

left monument as found, lowered monument, removed monument (explain)

On 5-21-84 placed a Cast Iron Monument
DATE

SKETCH OF REFERENCE TIES



Statement of evidence relative to this corner location is on back of page.

I hereby certify that this document and the data contained herein was prepared by me or under my direct supervision.

William J. Linn 12/15/88
SIGNATURE DATE

Registration No. 9394

Land Surveyor, Professional Engineer

County Surveyor, County Engineer

OFFICE OF THE REGISTER OF DEEDS

County of _____

I hereby certify that this document was filed in the Reg. of Deeds office at _____ .M. on the _____ day of _____ A.D., 19 _____

Register of Deeds _____

By _____, Deputy

DOCUMENT NO. _____

Statement of Evidence:

5-14-81:

Found 1/2" iron pin at 1/16 corner to west, through which a line was extended from the northwest section corner to a point giving equal distance east and west of the 1/16 corner. The point thus set, fell on the northerly extension of the east line of Wapicada Village as determined by found lot corners. The point was further supported by measured distance to the northeast section corner.

191257

OFFICE OF
BENTON COUNTY RECORDER
BENTON COUNTY, NH
CERTIFIED TO BE FILED
AND/OR RECORDED ON

JAN 12 12 08 PM '89

ALICE G. ENGELMEYER
COUNTY RECORDER

BY Jew DEPUTY