

A 368343

Certified, Filed and or Recorded on
Aug. 24, 2009 AT 08:16AM

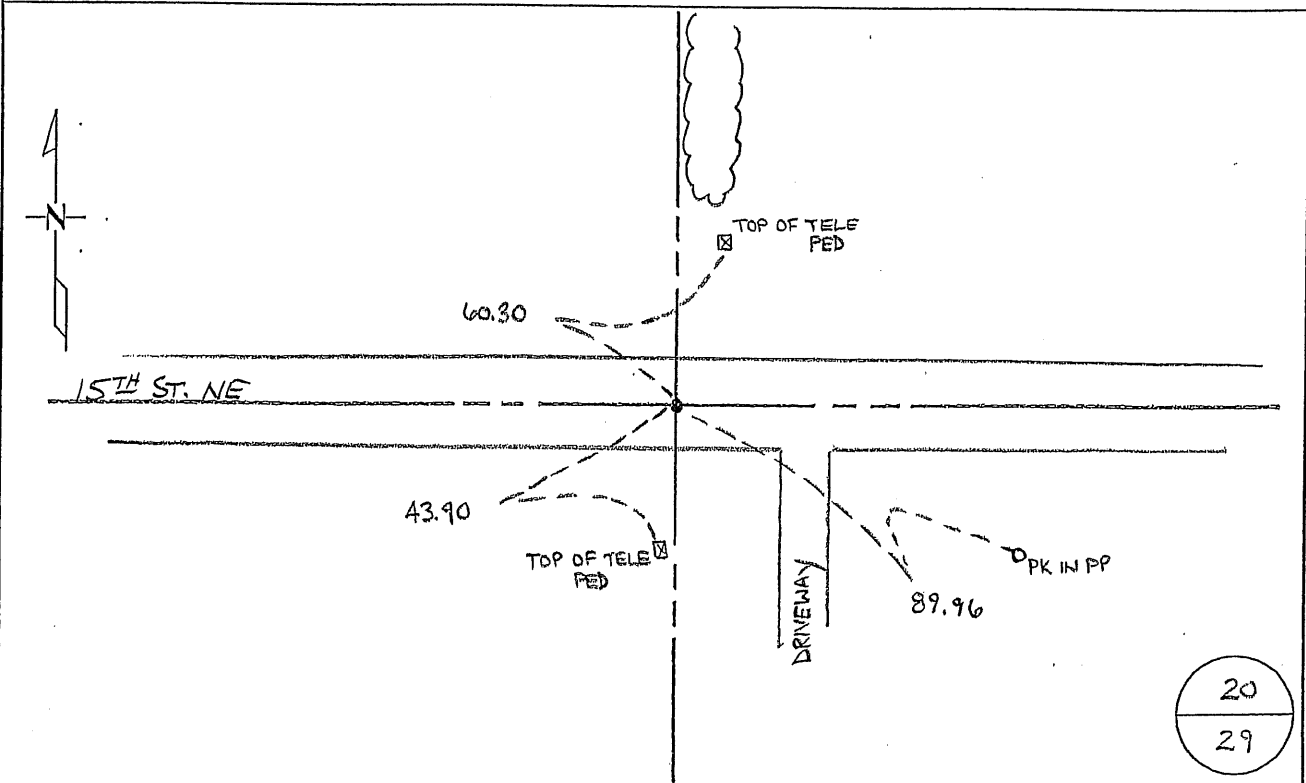
Signed: CK
MARILYN J NOVAK G V I
BENTON COUNTY MINNESOTA
MARILYN J NOVAK
COUNTY RECORDER

CERTIFICATE OF LOCATION OF GOVERNMENT CORNER

NORTH QUARTER Corner of Section 29, Township 36, Range 30
4TH Principal Meridian, State of Minnesota, County of Benton

At the corner location shown on the sketch:

- On 01 APR 2008 found a 1" IRON PIN
DATE
- left monument as found lowered monument removed monument (explain)
- On _____ placed an _____
DATE



Statement of evidence for this corner location is on back of this page.

I hereby certify that this document was researched and prepared by me or under my direct supervision and that I am a licensed Land Surveyor under the laws of the State of Minnesota.

Signature Jerome C. Wittstock Date 20 August 2009 License No. 19552

Title: Land Surveyor Professional Engineer County Surveyor County Engineer

Benton County Surveyor's Office
 Jerome C. Wittstock, County Surveyor
 Minnesota License No. 19552

Statement of Evidence:

L291

North Quarter Corner of Section 29, Township 36 North, Range 30 West, Minden Township, 4th Principal Meridian, Benton County, Minnesota.

1852 Original US General Land Office survey set a wood post at this location and bearing trees were recorded.
 16" Burr Oak N 27 1/2 E 58 links
 14" Burr Oak S 20 W 215 links

This corner is noted on the following recorded plats:

SCHRAMEL ADDITION 6/1975 Paul Wellen

Undated County Surveyor's Record Book 1, page 217, notes a post at the corner.

1912 County Engineer's Notebook 2, pages 101 to 104, is a road survey for SR No. 8 by M. J. Cleveland. Survey runs east-west along the section line. Notes state: "No corner found". Stationing gives distances of 2686 to the NW corner and 2780 feet to the NE corner of Section 29. Ties:
 Cor. Post North 40' Fence Post SW 29'

1917 County Surveyor's Record Book 1, pages 199-200, and Record Book A, Map No. 44, contains a survey of Section 20 by N. Drolson. He notes the corner was gone and he set a post on line with a fence line north that fit a found hole where a possible BT seems to have been. The hole was at N 15 E, 58 links. Other BT was also gone. He notes a distance of 40.67 chains (2684.22 feet) to both the NW and NE corners of Sec 29 and 80.00 chains to the N ¼ corner of Sec 20.

1938 Elletson notes the following reference ties to spike PI.
 T.P. NW 54.1 Cor F.P. NE 37.8

1983 David Regan, LS 12236, found a 1 1/4" iron rod at the intersection of the centerline of County Road 45 (running east and west) and a fence line (running north and south). He filed a Certificate of Location (#167978).

1992 James Nielsen, LS 11865, found a 1" iron rod and all of Regan's ties at the intersection of the centerlines of a fence line from the south and County Road 45 (running east and west). He filed a Certificate of Location (#216770).
 County Coordinates obtained from MN/DOT
 NAD 83 (1986 Adjustment)
 N- 110759.315
 E- 486871.520

1993 and 1994 MN/DOT Road Alignment Map, Roll N-15, and the following highway plats 05-4, 05-5, and 5-15 note a 1" iron rod at the corner.

2000 Westwood Professional Services, Inc. found a 1" rod at the corner location. We measured 2686.77 to the NW corner and 2685.78 feet to the NE corner.
 Coordinates Obtained by GPS (1" Pin)
 NAD 83 (1996 Adjustment)
 N-110759.920
 E-486871.134

2008 Westwood Professional Services, Inc. found a 1" iron pin at the centerline of east/west road. Established reference ties and verified the 2000 coordinates.

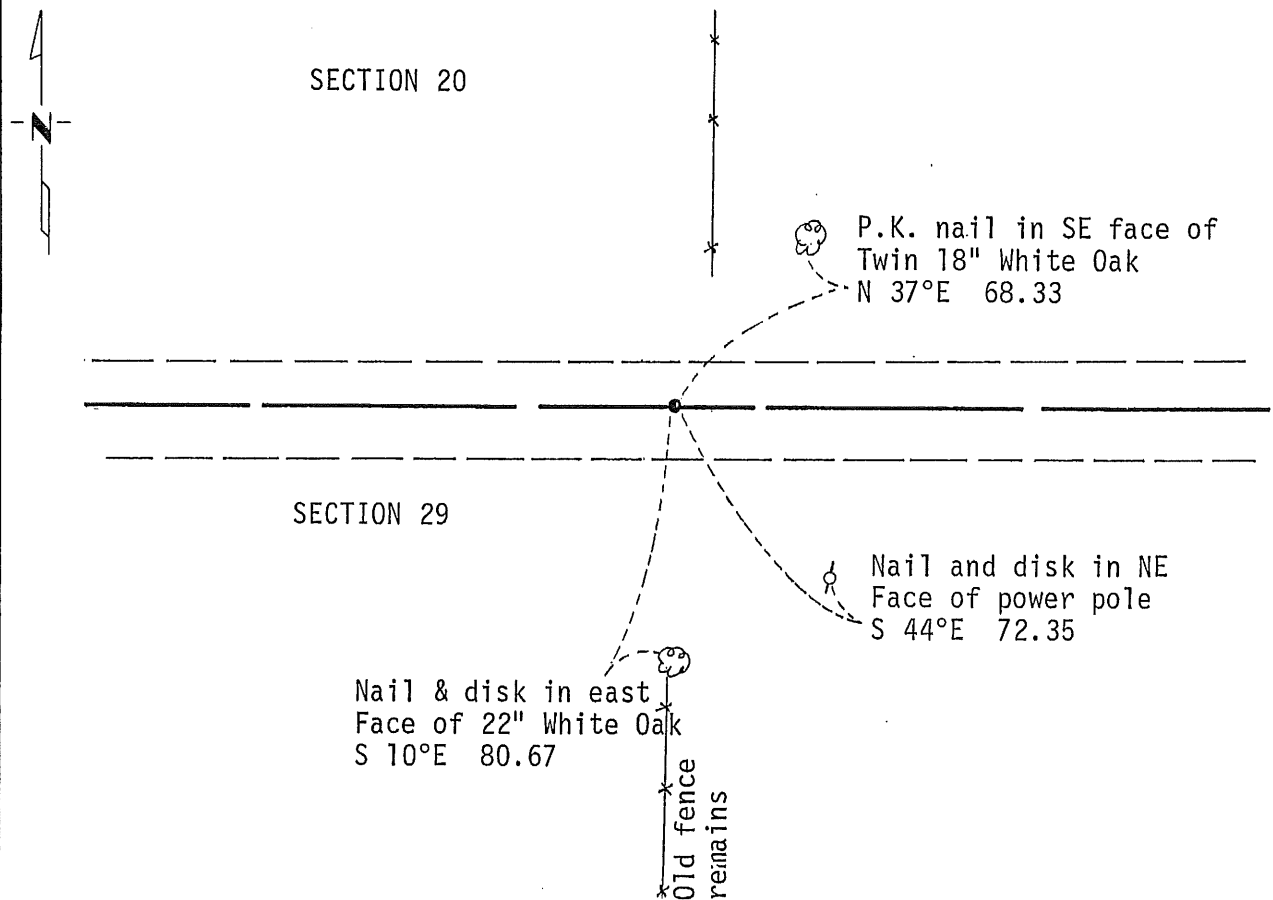
CERTIFICATE OF LOCATION OF GOVERNMENT CORNER

NORTH QUARTER Corner of Section 29, Township 36N, Range 30W, 4th P.M.
 STATE OF MINNESOTA, County of Benton

At the corner location shown on the sketch:

- On 04/21/92 found a 1-inch iron rod
DATE
- left monument as found, lowered monument, removed monument (explain)
- On _____ placed a _____
DATE

SKETCH OF REFERENCE TIES



Statement of evidence relative to this corner location is on back of page.

I hereby certify that this document and the data contained herein was prepared by me or under my direct supervision.

James W. Nielsen 1/7/1992
SIGNATURE DATE

Registration No. 11865
 Land Surveyor, Professional Engineer
 County Surveyor, County Engineer

OFFICE OF THE COUNTY RECORDER

County of _____

I hereby certify that this document was filed in the Co. Recorders office at _____ .M. on the _____ day of _____ A.D., 19 _____

County Recorder _____

By _____, Deputy

DOCUMENT NO. _____

Statement of Evidence:

NORTH QUARTER CORNER SECTION 29, TOWNSHIP 36 NORTH,
RANGE 30 WEST

Reference: Certificate of Location by David Regan dated 01/03/84.

On 04/21/92 Mn/DOT recovered a one-inch rod and all of Mr. Regan's reference ties.

The found monument is in agreement with the occupation lines to the east-west and south and is accepted by Mn/DOT as the correct location for the corner.

For details and survey analysis contact the Minnesota Department of Transportation Surveys Section in Baxter, MN.

216770

OFFICE OF
BENTON COUNTY RECORDER
BENTON COUNTY, MN
CERTIFIED TO BE FILED
AND/OR RECORDED ON

AUG 3 4 09 PM '93

ALICE C. ENGELMEYER
COUNTY RECORDER

BY Jew DEPUTY

CERTIFICATE OF LOCATION OF GOVERNMENT CORNER

North Quarter Corner of Section 29, Township 36, Range 30, 4th P.M.

STATE OF MINNESOTA, County of Benton

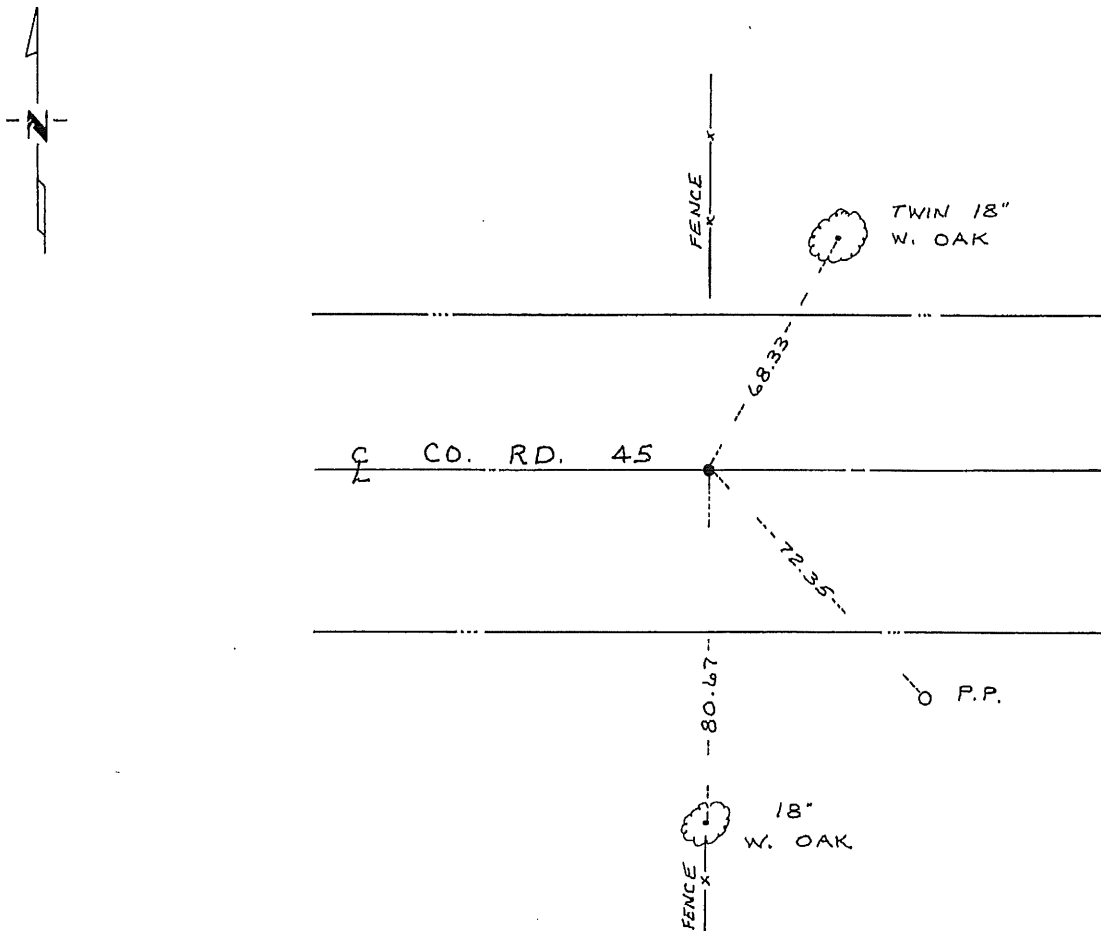
At the corner location shown on the sketch:

■ On 11/16/83 found a 1 1/4 inch iron rod in center line of County Road east-west and fence line north-south

■ left monument as found, lowered monument, removed monument (explain)

On _____ placed a _____

SKETCH OF REFERENCE TIES



Statement of evidence relative to this corner location is on back of page.

I hereby certify that this document and the data contained herein was prepared by me or under my direct supervision.

David P. Ryan / 1/3/84
SIGNATURE DATE

Registration No. 12256
■ Land Surveyor, Professional Engineer
 County Surveyor, County Engineer

County Recorder
OFFICE OF THE REGISTER OF DEEDS
County of Benton

I hereby certify that this document was filed in the Reg. of Deeds office at 4 P.M. on the 11th day of January A.D., 1984
County Recorder
Register of Deeds F.C. Johnson

By _____, Deputy
DOCUMENT NO. 167978