

Certified, Filed and or Recorded on
Aug. 24, 2009 AT 08:16AM

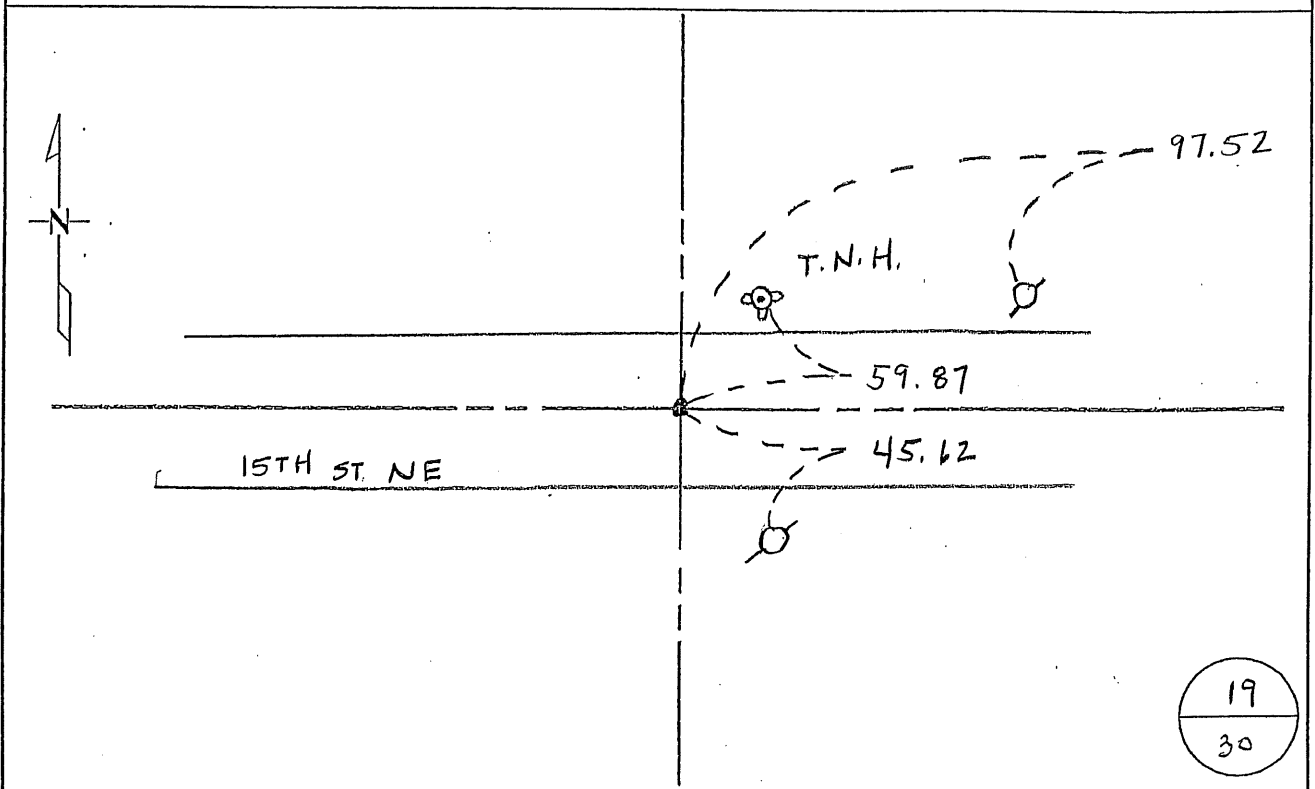
Signed: CK
MARILYN J NOVAK G V I
BENTON COUNTY MINNESOTA
MARILYN J NOVAK
COUNTY RECORDER

CERTIFICATE OF LOCATION OF GOVERNMENT CORNER

NORTH QUARTER Corner of Section 30, Township 36, Range 30
4TH Principal Meridian, State of Minnesota, County of Benton

At the corner location shown on the sketch:

- On 01 APRIL 08 found a IRON PIN
- left monument as found lowered monument removed monument (explain)
- On _____ placed an _____



Statement of evidence for this corner location is on back of this page.

I hereby certify that this document was researched and prepared by me or under my direct supervision and that I am a licensed Land Surveyor under the laws of the State of Minnesota.

Signature: Jerome C. Wittstock Date: 20 August 2009 License No. 19552
Title: Land Surveyor Professional Engineer County Surveyor County Engineer

Benton County Surveyor's Office
 Jerome C. Wittstock, County Surveyor
 Minnesota License No. 19552

Statement of Evidence:

L301

North Quarter Corner of Section 30, Township 36 North, Range 30 West, Minden Township, 4th Principal Meridian, Benton County, Minnesota.

- 1852 Original US General Land Office survey set a wood post at this location and bearing trees were recorded.
 4" Blk. Oak S 44 1/2 W 240 links
- 1912 County Engineer's Notebook 2, pages 101 to 104, is a road survey for SR No. 8 by M. J. Cleveland. Survey runs east-west along the section line. Notes state "no post found". Stationing gives distances of 2741 feet to the NW corner and 2653 feet to the NE corner of Section 30. Ties:
 F.P. NW 30.3' F.P. NE 41.5'
- 1915 County Surveyor's Record Book 1, page 158, and Record Book A, Map No. 10, shows a survey in Section 30 by JP Soderstrum. He notes no evidence of corner found and he set the corner by lost method, measuring 81.80 chains for the north line. He notes a distance of 41.61 chains (2746.26 feet) to the NW corner Sec 30 and a distance of 40.2 chains (2653.20 feet) to the NE corner Sec 30.
- 1973 William Lunser, LS 9394, set a RR spike at a proportionate measurement between the NE and the NW corners of the Section. A Certificate of Location (#134369) was recorded. He notes a distance of 2638.94 feet to the NE Cor Sec 30 and a distance of 2756.80 feet to the NW Cor Sec 30.
- 1977 A RR spike was found with the following reference ties.
 Centerline B.T. road E-W is 2' N
 Punch mark E end 18" CMP SE 31.65
- 1987 Paul Wellen, LS 10461, notes a distance of 2651.59 feet to the NE Cor Sec 30.
- 1992 James Nielsen, LS 11865, found a RR spike as set by Lunser at the corner location. A Certificate of Location (#216772) was recorded. MN/DOT Highway plans for TH 23 note a RR spike at the corner. States that spike fits proportion position.
 County Coordinates obtained from MN/DOT
 NAD 83 (1986 Adjustment)
 N- 110703.938
 E- 481534.316
- 1996 Wayne Claussen, LS 7112, found a 1/2" open pin, 2.0 feet south of the centerline of County Road 45. He filed a Certificate of Location (#244903).
- 2001 Westwood Professional Services, Inc. found a 1/2" iron pipe.
 County Coordinates Obtained by GPS:
 NAD 83 (1996 Adjustment)
 N-110704.402
 E-481533.785
- Measured 2744.53 to the NW corner and 2651.63 feet to the NE corner. Position fits within 0.10 feet of the proportional lost position and agrees with Soderstrum's 1915 position. Assume Lunser set the corner at the lost position, but distances recorded on Certificate are wrong.
- 2008 Westwood Professional Services, Inc. found a 1/2" iron pipe, established reference ties and verified 2001 coordinates..

CERTIFICATE OF LOCATION OF GOVERNMENT CORNER

NORTH QUARTER Corner of Section 30, Township 36N, Range 30W, 4th P.M.

STATE OF MINNESOTA, County of Benton

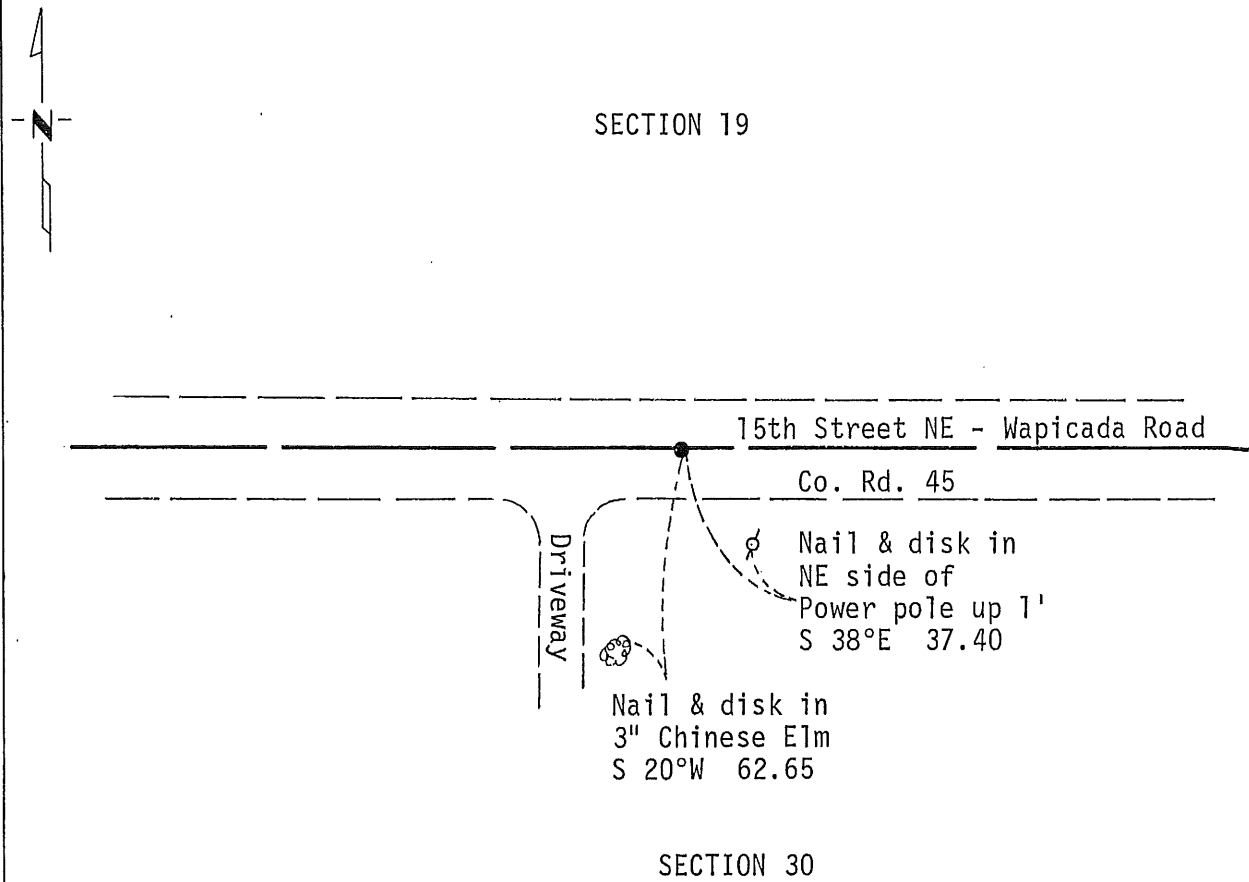
At the corner location shown on the sketch:

On 04/13/92 found a railroad spike
DATE

left monument as found, lowered monument, removed monument (explain)

On _____ placed a _____
DATE

SKETCH OF REFERENCE TIES



Statement of evidence relative to this corner location is on back of page.

I hereby certify that this document and the data contained herein was prepared by me or under my direct supervision.

James W. Nielsen 1/7/1993
SIGNATURE DATE

Registration No. 11865

Land Surveyor, Professional Engineer

County Surveyor, County Engineer

OFFICE OF THE COUNTY RECORDER

County of _____

I hereby certify that this document was filed in the Co. Recorders office at _____ .M. on the _____ day of _____ A.D., 19 _____

County Recorder _____

By _____, Deputy

DOCUMENT NO. _____

Statement of Evidence: NORTH QUARTER CORNER SECTION 30, TOWNSHIP 36 NORTH,
RANGE 30 WEST

Reference: Certificate of Location Document #134639 filed on 06/11/73
by William Lunser.

On 04/13/92 Mn/DOT recovered Mr. Lunser's railroad spike that was set
at proportional measure between the northeast and northwest section
corners. The found monument agrees with proportional measure and is
accepted by Mn/DOT As the correct location for the corner.

For details and survey analysis contact the Minnesota Department of
Transportation Surveys Section in Baxter, MN.

216772

OFFICE OF
BERTON COUNTY RECORDER
BERTON COUNTY, MN
CERTIFIED TO BE FILED
AND FOR RECORDED ON

AUG 3 4 09 PM '93

ALICE G. ENGELMEYER
COUNTY RECORDER

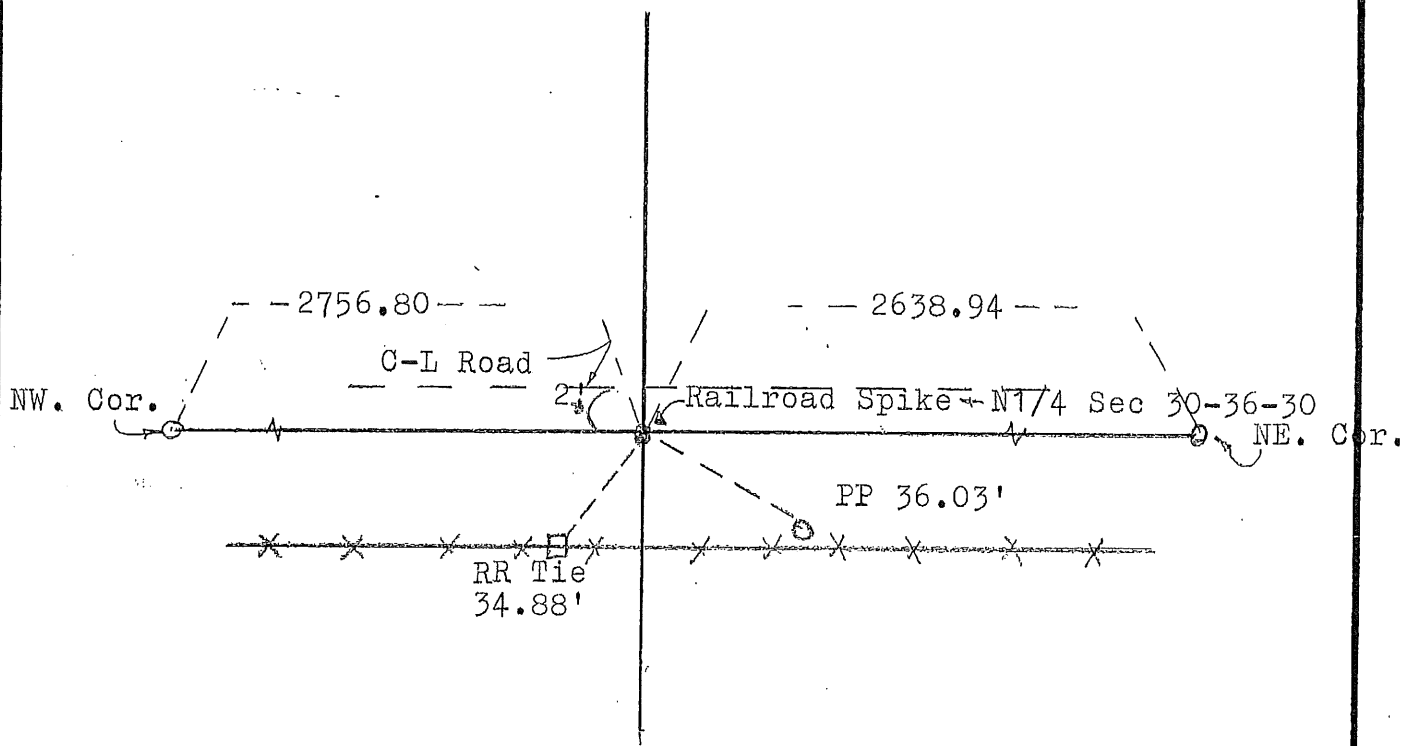
BY  DEPUTY

Minden

CERTIFICATE OF LOCATION OF GOVERNMENT CORNER

I hereby certify that on the 6 day of February, 1973
I did Restore the North 1/4 corner of Section 30,
Twp. 36, Rg. 30, Benton County, Minnesota, which
was evidenced by Proportional measure from NE to NW Section
Corners

I further certify that in order to perpetuate said corner I did
at the exact location thereof place a permanent marker consisting
of Railroad Spike and that
I did establish witness or reference monuments as shown below:



134369

I hereby certify that the
above is true and correct
and that I am a registered
Land Surveyor under the laws
of the State of Minnesota.

William J. Jensen

Minn. Registration No. 9394

Office of the Register of Deeds,
Benton County, Minn.

I hereby certify that the within
instrument was filed for record
in this office on the 11 day of
June, 1973.

J.A. Johnson
Register of Deeds

By M. Nowak Deputy.