

Certified, Filed and or Recorded on
May 06, 2008 AT 01:17PM

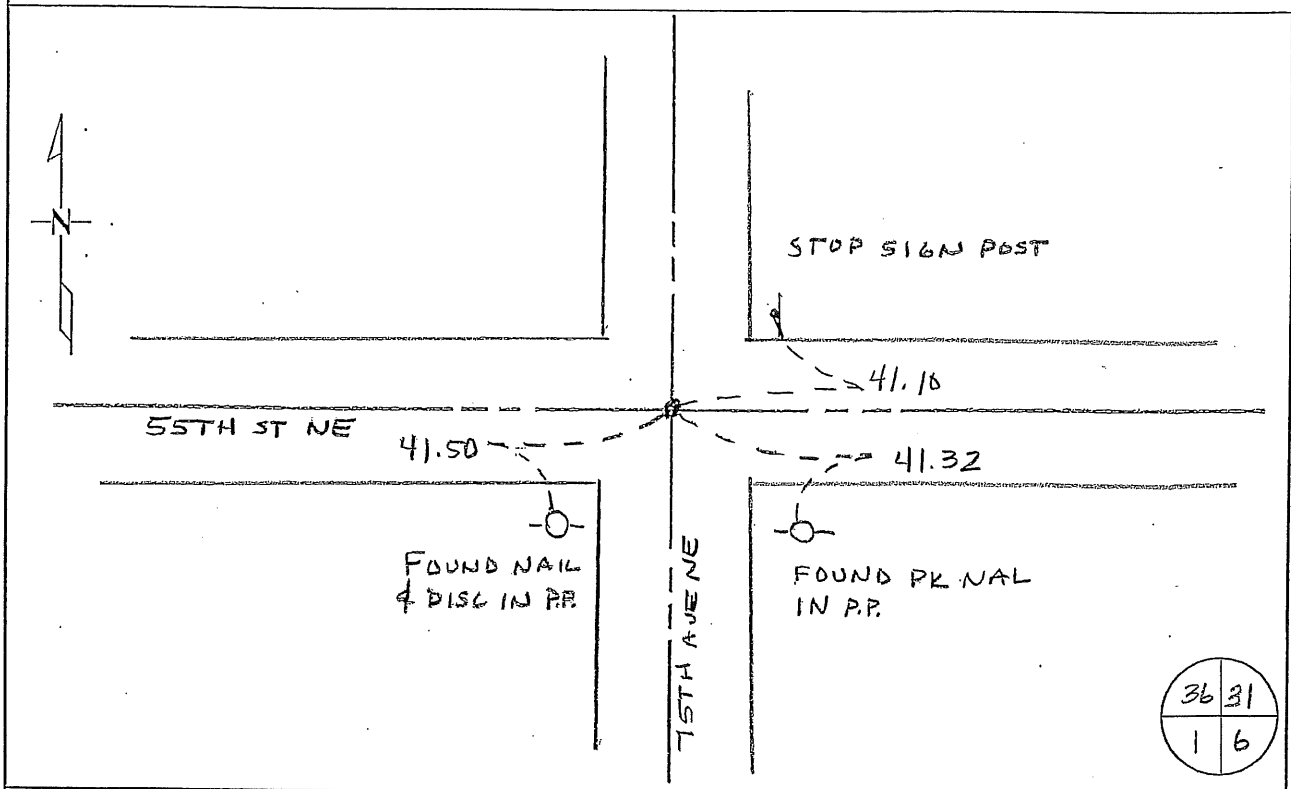
Signed: M
MARILYN J NOVAK G V ✓
BENTON COUNTY MINNESOTA
MARILYN J NOVAK
COUNTY RECORDER

CERTIFICATE OF LOCATION OF GOVERNMENT CORNER

NORTHEAST Corner of Section 1, Township 36, Range 30
4TH Principal Meridian, State of Minnesota, County of Benton

At the corner location shown on the sketch:

- On 02 APRIL 08 found a Cast Iron Monument
DATE
- left monument as found lowered monument removed monument (explain)
- On 02 APRIL 08 placed an PK NAIL & COUNTY WASHER OVER
DATE
FOUND MONUMENT



Statement of evidence for this corner location is on back of this page.

I hereby certify that this document was researched and prepared by me or under my direct supervision and that I am a licensed Land Surveyor under the laws of the State of Minnesota.

Signature Jerome C. Wittstock Date 06 May 2008 License No. 19552
Title: Land Surveyor Professional Engineer County Surveyor County Engineer

Benton County Surveyor's Office
 Jerome C. Wittstock, County Surveyor
 Minnesota License No. 19552

Statement of Evidence:**L012**

Northeast Corner of Section 1, Township 36 North, Range 30 West, Minden Township, 4th Principal Meridian, Benton County, Minnesota.

- 1849 Original US General Land Office survey established this corner and note a wood post was set with bearing trees marked.
- | | |
|-------------------|----------|
| 6" Poplar N 17 E | 8 links |
| 6" Poplar N 45 W | 43 links |
| 6" Poplar S 76 W | 15 links |
| 6" Blk Oak S 21 E | 11 links |
- A line tree is noted as an 8" Blk Oak West 21.15 chains
- 1930 County Engineer's notebook No. 60 for CR 25 running north-south indicates a spike set for the corner with town road running east-west with ties:
- | | | | | | |
|--------------|----|-------|--------------|----|-------|
| S. End Culv. | SE | 21.0' | N. End Culv. | NE | 20.2' |
|--------------|----|-------|--------------|----|-------|
- 1939 County Engineer's Notebook No. 127 contains survey of CAR 29 running west to east on section line and terminating at this corner. Corner is shown as a hub set in center of road north and south. Ties:
- | | | | | | |
|--------------|----|-------|--------------|----|-------|
| S. End Culv. | SE | 27.5' | N. End Culv. | NE | 25.0' |
|--------------|----|-------|--------------|----|-------|
- 1959 County Engineer's Notebook No. 208 contains a survey for CSAH No. 25 running south to north on the section lines. Corner is shown as a hub set in center of 4-way road intersection. Ties.
- | | | | | | |
|-------------------|----|------|-------------------|----|------|
| North Culvert end | NE | 25.0 | South Culvert end | SE | 27.5 |
|-------------------|----|------|-------------------|----|------|
- 1961 County Surveyor's Record Book 1, page 95 notes an iron at the corner with the following reference ties.
- | | | | | | |
|-------------|----|------|----|----|-------|
| TP | NE | 47.9 | PP | SW | 41.75 |
| Anchor Pole | SE | 43.0 | | | |
- (Noted in Notebook No. 208 as "placed".)
- 1992 Paul Wellen, LS 10461, found a 1 1/4" Solid Iron at the centerline of County Road 44 and County Road 25. He replaced the iron with a cast iron monument and filed a Certificate of Location (#216295).
- 1995 Comstock and Davis performed GPS work under contract with Benton County and Coordinates Obtained by GPS NAD 83 (1986 Adjustment) to a CIM:
- | | |
|----|------------|
| N- | 132118.507 |
| E- | 510582.156 |
- 2003 Barry Dornidan, LS No. 23044, found PK Nail at the corner position.
 County Coordinates furnished by B & H
 NAD 83 (1996 Adjustment)
 N- 132118.989
 E- 510582.832
- 2004 MN/DOT
 County Coordinates obtained by GPS
 NAD 83 (1996 Adjustment)
 N- 132118.734
 E- 510581.684
- 2008 Westwood Professional Services, Inc. set a PK Nail and county washer over found CIM. MnDOT coordinates were verified.

Township Landmarks: Minnesota Statutes 381.13 required every county to have placed by a surveyor at the northeast corner of each congressional township a durable magnetic monument having a head not less than 3-1/2 inches in diameter and a length of 20 inches. We have not been able to find evidence that this was done in Benton County, but it was done in most counties in the late 1800's and is a possibility that it was also done in Benton County. Many of the counties used stone monuments instead of iron.

CERTIFICATE OF LOCATION OF GOVERNMENT CORNER

Northeast Corner of Section 1, Township 36, Range 30, 4th P.M.

STATE OF MINNESOTA, County of Benton

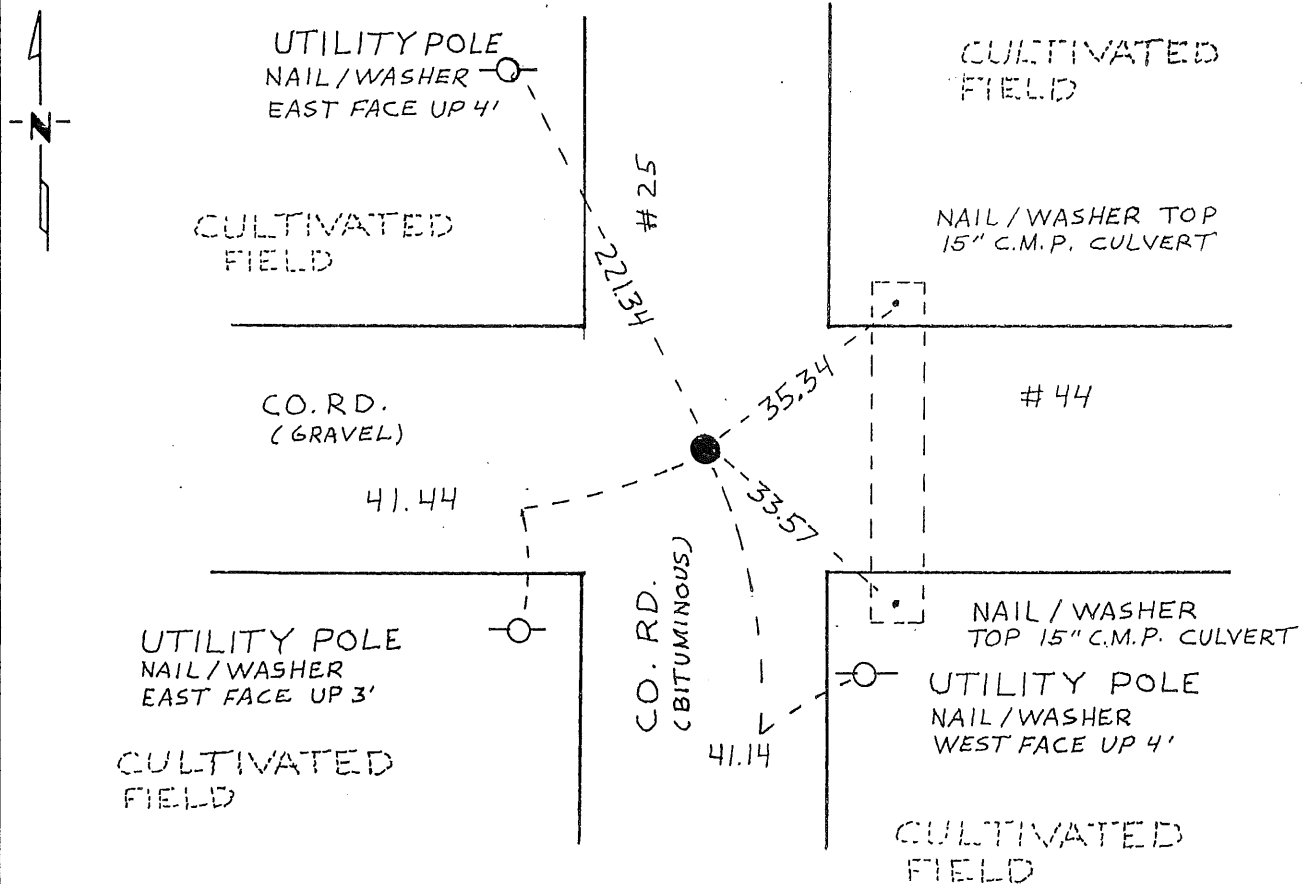
At the corner location shown on the sketch:

On 7-20-92 found a 1 1/4" Solid Iron
DATE

left monument as found, lowered monument, removed monument (explain)

On 7-20-92 placed a Cast Iron Monument
DATE

SKETCH OF REFERENCE TIES



Statement of evidence relative to this corner location is on back of page.

I hereby certify that this document and the data contained herein was prepared by me or under my direct supervision.

[Signature] 2-16-93
SIGNATURE DATE

Registration No. 10461

Land Surveyor, Professional Engineer

County Surveyor, County Engineer

OFFICE OF THE COUNTY RECORDER

County of _____

I hereby certify that this document was filed in the Co. Recorders office at _____ .M. on the _____ day of _____ A.D., 19 _____

County Recorder _____

By _____, Deputy

DOCUMENT NO. _____

Statement of Evidence:

NORTHEAST CORNER, SECTION 1, T 36N, R 30W, 4TH P.M.

1. During the G.L.O. survey of 1844, Mr. Theodore Conkey, a U.S. Deputy Surveyor, set a wood post to mark said corner.
2. Benton County's old surveyor's books provided no information to locate said corner.
3. On July 20, 1992, Paul E. Wellen & Associates searched for said corner and found a 1 1/4" solid Iron at center line-center line of County Road #44 and County Road #25. We accepted the Iron Monument as evidence of said corner, we set Cast Iron Monument in place of Iron Monument. Also, we established new reference ties as indicated.

216295

OFFICE OF
BENTON COUNTY RECORDER
BENTON COUNTY, MO
CERTIFIED TO BE FILED
AND/OR RECORDED ON

JUL 14 1 23 PM '93

ALICE C. ENGELMEYER
COUNTY RECORDER

BY  DEPUTY