

A 356224

Certified, Filed and or Recorded on
Apr. 02, 2008 AT 10:56AM

Signed: CK
MARILYN J NOVAK G V I
BENTON COUNTY MINNESOTA
MARILYN J NOVAK
COUNTY RECORDER

CERTIFICATE OF LOCATION OF GOVERNMENT CORNER

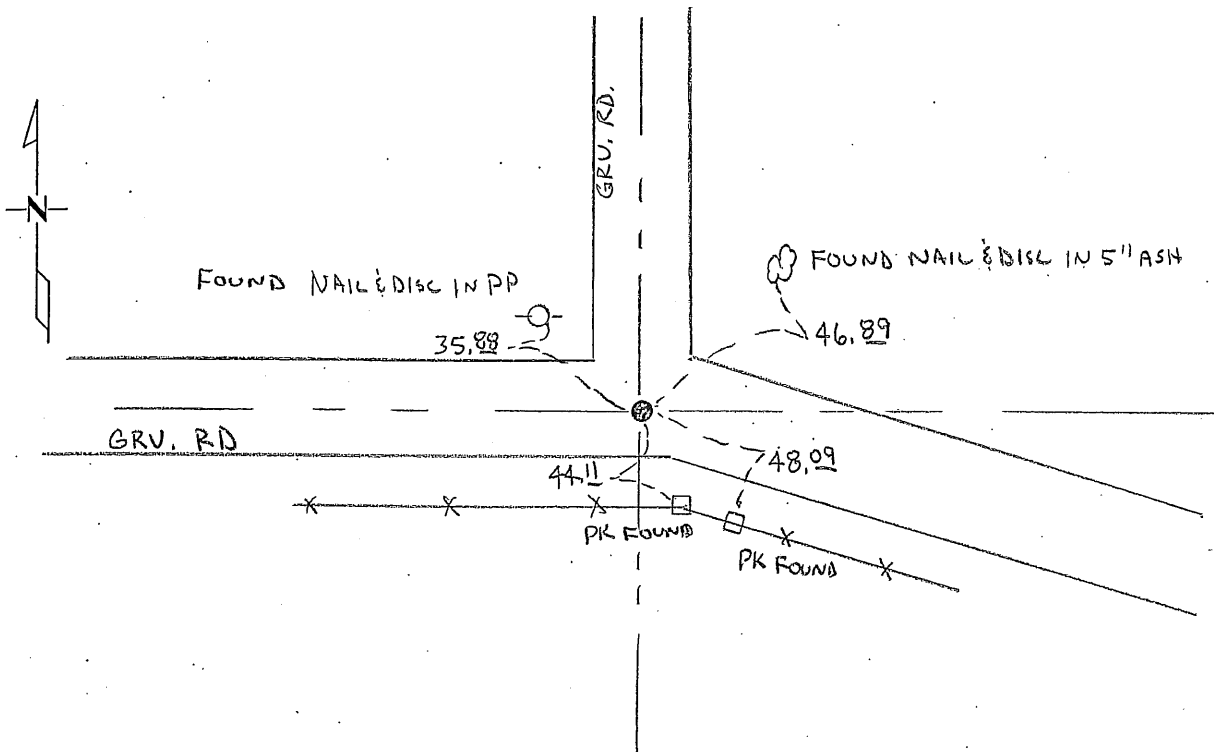
NORTH EAST Corner of Section 3, Township 36, Range 30
4TH Principal Meridian, State of Minnesota, County of Benton

At the corner location shown on the sketch:

On 1-23-07 found a CAST IRON MON
DATE

left monument as found lowered monument removed monument (explain)

On _____ placed an _____
DATE



Statement of evidence for this corner location is on back of this page.

I hereby certify that this document was researched and prepared by me or under my direct supervision and that I am a licensed Land Surveyor under the laws of the State of Minnesota.

Signature Jerome C. Wittstock Date 3-24-2008 License No. 19552

Title: Land Surveyor Professional Engineer County Surveyor County Engineer

Benton County Surveyor's Office
 Jerome C. Wittstock, County Surveyor
 Minnesota License No. 19552

Statement of Evidence:**L032**

The Northeast Corner of Section 3, Township 36 North, Range 30 West, Minden Township, 4th Principal Meridian, Benton County, Minnesota.

1849 Original US General Land Office survey established this corner and note a wood post was set with bearing trees marked:

4" Bur Oak	N 33 3/4 E	312 links
8" Bur Oak	N 29 W	172 links

Notes show a line tree: 18" Elm East 22.00 chains

Undated (Old) County Surveyor's Record Book 1, page 165 notes the following bearing tree:

12" Bur Oak S 46 W 125 links

1890 County Road Book, page 32, contains Surveyor's Report by Felix Parrent stating road laid out on section lines west and north from this corner.

1989 David Regan, LS 12236, searched and dug in area of corner and found nothing. He set a cast iron monument using a section subdivision of Section 3. A Certificate of Location was filed (#195014).

1995 Comstock and Davis performed GPS work under contract with Benton County.

Coordinates Obtained by GPS NAD 83 (1986 Adjustment) to a CIM:

N- 132312.331

E- 499925.904

2007 Westwood Professional Services, Inc. found a CIM and established new reference ties.

Coordinates Obtained by GPS

NAD 83 (1986 Adjustment) to a CIM:

N- 132312.457

E- 499925.369

CERTIFICATE OF LOCATION OF GOVERNMENT CORNER

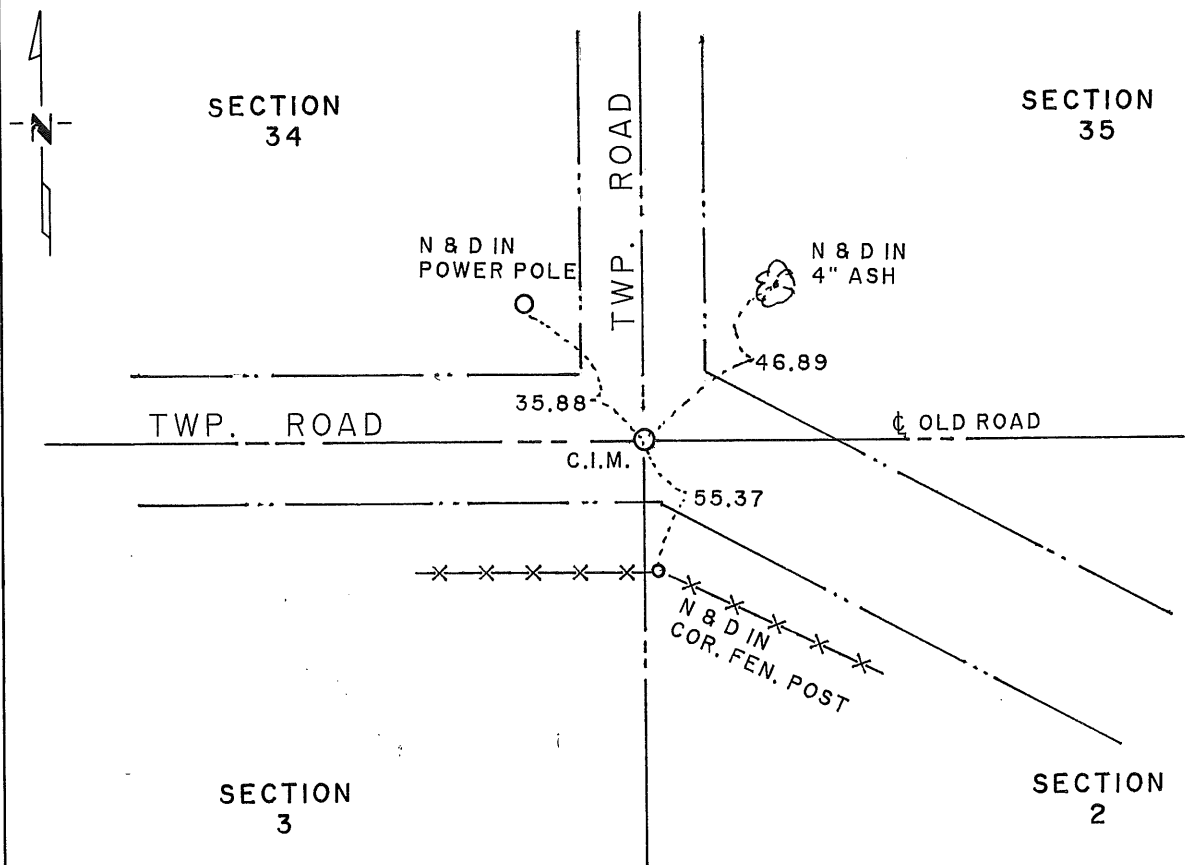
NORTHEAST Corner of Section 3, Township 36, Range 30, 4TH P.M.

STATE OF MINNESOTA, County of BENTON

At the corner location shown on the sketch:

- On _____ found a _____
DATE
- left monument as found, lowered monument, removed monument (explain)
- On 5/25/89 placed a Cast Iron Monument
DATE

SKETCH OF REFERENCE TIES



Statement of evidence relative to this corner location is on back of page.

I hereby certify that this document and the data contained herein was prepared by me or under my direct supervision.

David P. Regan 10/30/89
SIGNATURE DATE

Registration No. 12236

- Land Surveyor, Professional Engineer
- County Surveyor, County Engineer

OFFICE OF THE REGISTER OF DEEDS

County of _____

I hereby certify that this document was filed in the Reg. of Deeds office at _____ .M. on the _____ day of _____ A.D., 19 _____

Register of Deeds _____

By _____, Deputy

DOCUMENT NO. _____

Statement of Evidence:

The G.L.O. survey was done in October, 1849 by Theodore Conkey.

The County records show no reference to this corner.

On 5/25/89, David P. Regan Land Surveying, Inc. searched and dug the area and found nothing. Established corner from section subdivision of Section 3 and set a Cast Iron Monument.

195014

OFFICE OF
BENTON COUNTY RECORDER
BENTON COUNTY, MN
CERTIFIED TO BE FILED
AND/OR RECORDED ON

Nov 2 4 22 PM '89

ALICE O. ENGELMEYER
COUNTY RECORDER

BY Jed DEPUTY