

Certified, Filed and or Recorded on
May 06, 2008 AT 01:23PM

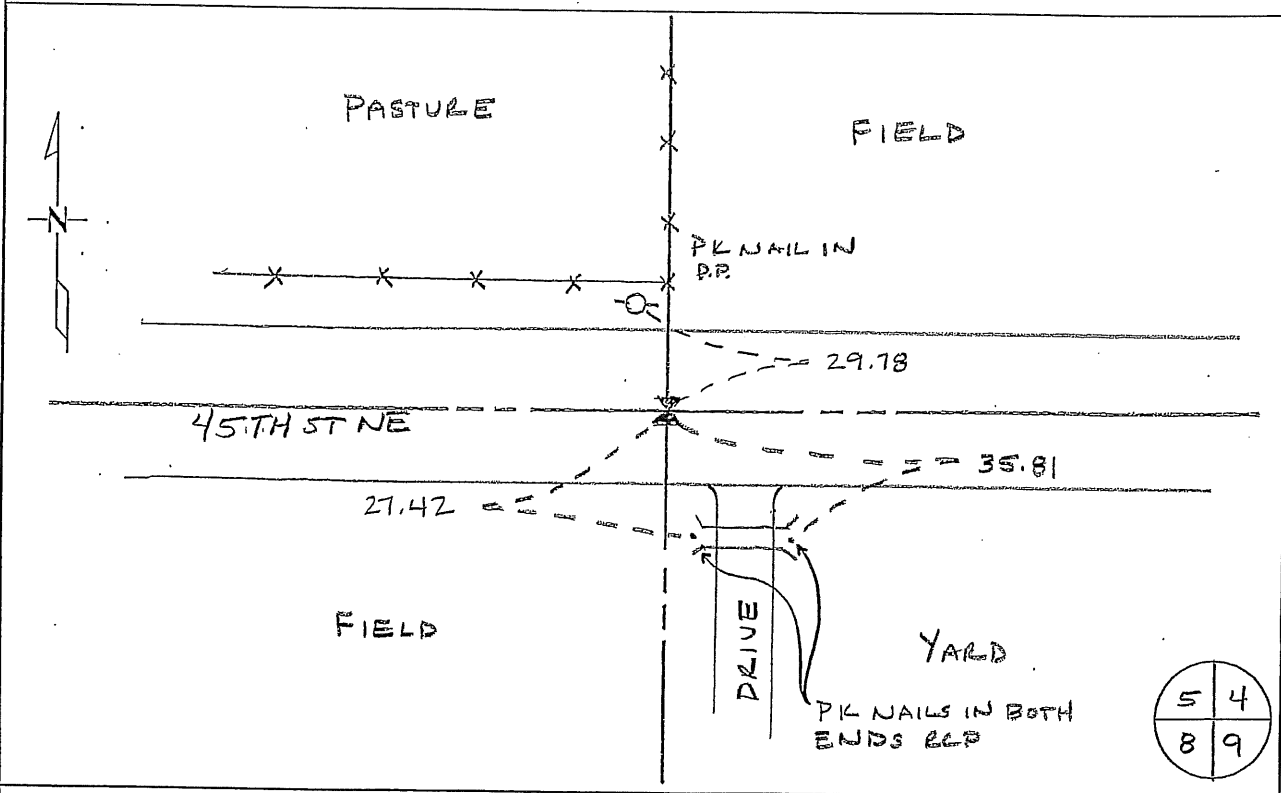
Signed: MJ
MARILYN J NOVAK G V X
BENTON COUNTY MINNESOTA
MARILYN J NOVAK
COUNTY RECORDER

CERTIFICATE OF LOCATION OF GOVERNMENT CORNER

NORTHEAST Corner of Section 8, Township 36, Range 30
4TH Principal Meridian, State of Minnesota, County of Benton

At the corner location shown on the sketch:

- On 02 APRIL 08 found a Cast Iron Monument
DATE
- left monument as found lowered monument removed monument (explain)
- On _____ placed an _____
DATE



Statement of evidence for this corner location is on back of this page.

I hereby certify that this document was researched and prepared by me or under my direct supervision and that I am a licensed Land Surveyor under the laws of the State of Minnesota.

Signature Jerome C. Wittstock Date 06 May 2008 License No. 19552
Title: Land Surveyor Professional Engineer County Surveyor County Engineer

Benton County Surveyor's Office
 Jerome C. Wittstock, County Surveyor
 Minnesota License No. 19552

Statement of Evidence:

L082

Northeast Corner of Section 8, Township 36 North, Range 30 West, Minden Township,
 4th Principal Meridian, Benton County, Minnesota.

1852 Original General Land Office survey established this corner and a wood post was set for the corner and bearing trees were recorded.

10" Bur Oak	S 83 1/2 E	185 links
15" Bur Oak	S 33 1/2 W	206 links

1890 County Road Book, page 32, contains Surveyor's Report by Felix Parrent stating road laid out on section lines south and east from this corner.

1933 County Engineer's Notebook No. 71 contains survey of County road running west to east. Notes show corner marked by a hub in center of road with fence lines north and south. Ties:

F.P.	NE	43.6'
T.P.	S	30.0'

Stationing gives delta angle of 0-04' left with a note that made point a POT later.

1964 County Surveyor's Record Book 1, page 167, notes the following reference ties to an iron:

PP	NW	34.5
FP	NW	39.05

This corner is 2652 feet from the East 1/4 corner Sec 5.

1982 David Regan, LS 12236, found a 1/2" solid iron in the centerline of an east/west road and on a fence line north, 13.0 feet west of a driveway south. He set a cast iron monument over the iron and filed a Certificate of Location (#162589).

1995 Comstock and Davis performed GPS work under contract with Benton County and Coordinates Obtained by GPS NAD 83 (1986 Adjustment) to a CIM:

N-	126752.635
E-	489422.325

2004 County Coordinates obtained using GPS by BWK
 NAD 83 (1996 Adjustment)

N-	126752.814
E-	489421.825

2008 Westwood Professional Services, Inc. found a CIM at the centerline of east/west bituminous road, and fence line north and established reference ties to corner. BWK coordinates were verified.

CERTIFICATE OF LOCATION OF GOVERNMENT CORNER

Northeast _____ Corner of Section 8, Township 36, Range 30, 4th P.M.

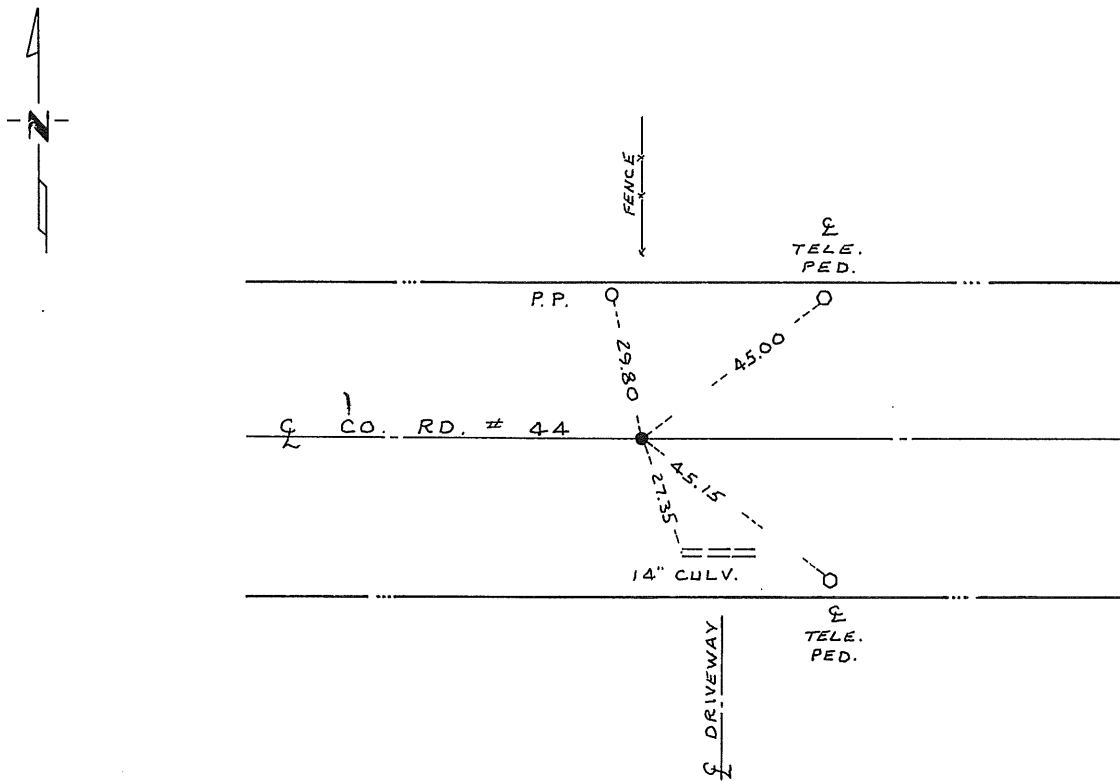
STATE OF MINNESOTA, County of Benton

At the corner location shown on the sketch:

- On 6/21/82 found a $\frac{1}{2}$ inch solid iron in center line of east-west County road and on fence line north, 13 feet west of drwy south
 left monument as found, lowered monument, removed monument (explain)

- On _____ placed a Benton County cast iron monument
 DATE _____

SKETCH OF REFERENCE TIES



Statement of evidence relative to this corner location is on back of page.

I hereby certify that this document and the data contained herein was prepared by me or under my direct supervision.

David P. Ryan SIGNATURE 7/13/82 DATE

Registration No. 12236

- Land Surveyor, Professional Engineer
- County Surveyor, County Engineer

OFFICE OF THE REGISTER OF DEEDS ~~County Record~~
County of Benton

I hereby certify that this document was filed in the Reg. of Deeds office at 10 A.M. on the 27th day of July A.D., 1982

Register of Deeds ~~County Record~~ F. A. Johnson

By _____, Deputy

DOCUMENT NO. 162589