

Certified, Filed and or Recorded on
Aug. 24, 2009 AT 08:15AM

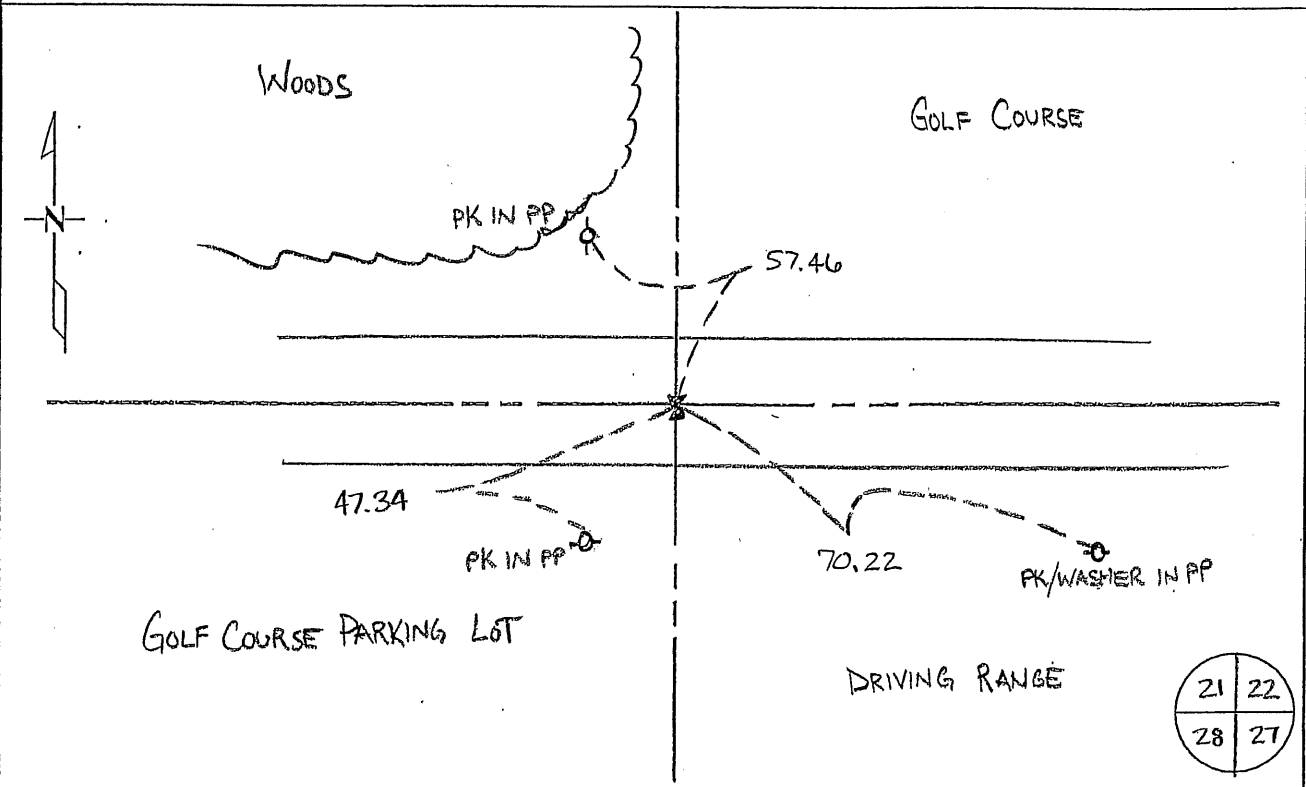
Signed: CK
MARILYN J NOVAK G V I
BENTON COUNTY MINNESOTA
MARILYN J NOVAK
COUNTY RECORDER

CERTIFICATE OF LOCATION OF GOVERNMENT CORNER

NORTHEAST Corner of Section 28, Township 36, Range 30
4TH Principal Meridian, State of Minnesota, County of Benton

At the corner location shown on the sketch:

- On 01 APR 2008 found a Cast Iron Monument
DATE
- left monument as found lowered monument removed monument (explain)
- On 01 APRIL 08 placed an PK NAIL & COUNTY WASHER
DATE



Statement of evidence for this corner location is on back of this page.

I hereby certify that this document was researched and prepared by me or under my direct supervision and that I am a licensed Land Surveyor under the laws of the State of Minnesota.

Signature: Jerome C. Wittstock Date: 20 August 2009 License No. 19552

Title: Land Surveyor Professional Engineer County Surveyor County Engineer

Benton County Surveyor's Office
 Jerome C. Wittstock, County Surveyor
 Minnesota License No. 19552

Statement of Evidence:

L282

Northeast Corner of Section 28, Township 36 North, Range 30 West, Minden Township, 4th
 Principal Meridian, Benton County, Minnesota.

- 1852 Original US General Land Office survey established this corner and notes show a wood post set at this location and bearing trees were recorded.
 6" Blk Oak S 34 1/2 W 14 links 6" Aspen N 57 W 72 links
- 1912 County Engineer's Notebook 2, pages 101 to 104, is a road survey for SR No. 8 by M. J. Cleveland. Survey was run on section line east-west. Notes show stone found for the corner with ties:
 5" Bur Oak N 14 W 52.2 10" Red Oak S 13-45 E 58.0
 County Surveyor's Record Book 1, page 215, shows a stone with the same ties:
- 1947 MN/DOT Highway plans for TH 23 show a stone monument and a distance of 2163.4 feet north to the centerline.
- 1958 County Surveyor's Record Book 1, page 215 shows a stone with the following reference ties:

F.P.	SW	38.0	P.P.	SE	41.6
F.P.	N	38.72	F.P.	S	31.60
P.P.	SE	69.88			
- 1981 William Lunser, LS 9394, found a field stone with a drill hole, 16" below the road surface. Stone fits well with M.B. Lang records and measurements given on the right of way map of Trunk Highway 23. Mr. Lunser set a cast iron monument over the stone and established reference ties. A Certificate of Location (#158855) was recorded.
- 1990 Cast iron monument was destroyed by road construction.
- 1992 MN/DOT found a PK nail and all of Mr. Lunser's reference ties and set a 3/4" iron pin at the PK location. A Certificate of Location (#216765) was recorded.
 County Coordinates from MN/DOT:
 NAD 83 (1986 Adjustment)
 N-110833.534
 E-494911.658
- 1993 MN/DOT Plat No. 5-7 and Plat No. 5-8 notes a 3/4" pin at the corner location.
- 1995 Comstock and Davis performed GPS work under contract with Benton County and Coordinates Obtained by GPS NAD 83 (1986 Adjustment) to a 3/4" iron pin:
 N- 110834.069
 E- 494911.816
- 2001 Westwood Professional Services, Inc. found a 3/4" iron pin over a nail with ribbon at the intersection of the centerline of County Road 8 (running east and west) and occupation to the north. We removed the 3/4" iron monument and the nail and placed a cast iron monument at the location and established reference ties.
- 2002 County Coordinates obtained by GPS to CIM
 NAD 83 (1996 Adjustment)
 N- 110834.215
 E- 494911.242
- 2008 Westwood Professional Services, Inc placed a PK nail and County washer over existing CIM. Established reference ties and verified the 2002 coordinates.

CERTIFICATE OF LOCATION OF GOVERNMENT CORNER

NORTHEAST Corner of Section 28, Township 36N, Range 30W, 4th P.M.

STATE OF MINNESOTA, County of Benton

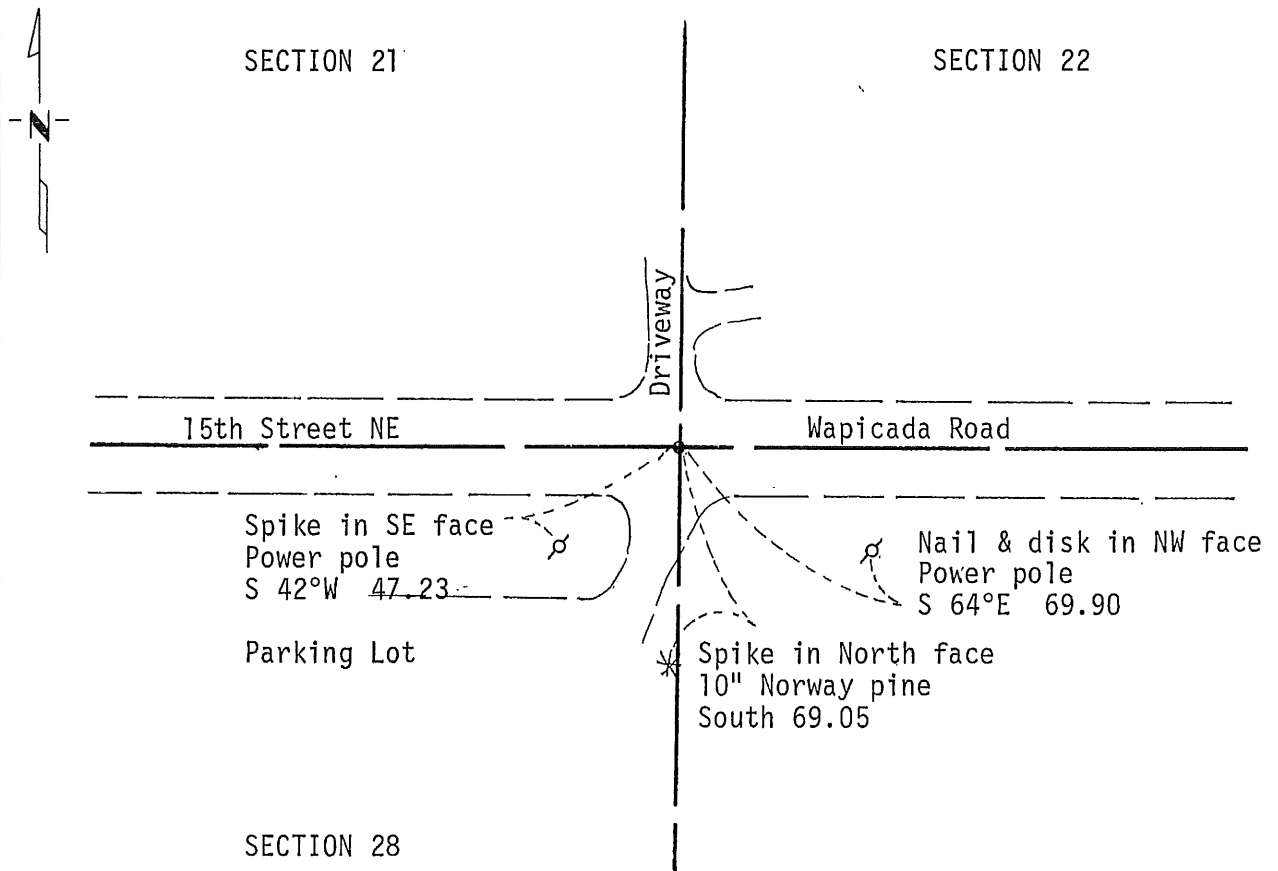
At the corner location shown on the sketch:

On 04/21/92 found a P.K. nail
DATE

left monument as found, lowered monument, removed monument (explain)

On 12/31/92 placed a 3/4" pin
DATE

SKETCH OF REFERENCE TIES



Statement of evidence relative to this corner location is on back of page.

I hereby certify that this document and the data contained herein was prepared by me or under my direct supervision.

James W. Nielsen 1/7/1993
SIGNATURE DATE

Registration No. 11865

Land Surveyor, Professional Engineer

County Surveyor, County Engineer

OFFICE OF THE COUNTY RECORDER

County of _____

I hereby certify that this document was filed in the Co. Recorders office at _____ .M. on the _____ day of _____ A.D., 19 _____

County Recorder _____

By _____, Deputy

DOCUMENT NO. _____

Statement of Evidence: NORTHEAST CORNER SECTION 28, TOWNSHIP 36 NORTH,
RANGE 30 WEST

Reference: Certificate of Location by William Lunser dated 03/23/81

The 1947 Highway Department right of way map calls for a field stone 2163.4 feet north of T.H. 23 station 212+39.50.

On 04/21/92 Mn/DOT recovered a P.K. nail and all of Mr. Lunser's reference ties. Mr. Lunser had set a cast iron monument over the field stone with drill hole in 1981. Road construction in 1990 destroyed the field stone and the cast iron monument. The found monument agrees with the 1947 location and is accepted by Mn/DOT as the correct location for the corner.

On 12/31/92 Mn/DOT set a 3/4 inch iron pin at the Pk location.

For details and survey analysis contact the Minnesota Department of Transportation Surveys Office in Baxter, MN.

2 1 6 7 6 5

OFFICE OF
BENTON COUNTY RECORDER
BENTON COUNTY, MN
CERTIFIED TO BE FILED
AND/OR RECORDED ON

AUG 3 4 08 PM '93

ALICE C. ENSELMEYER
COUNTY RECORDER

BY ju DEPUTY

CERTIFICATE OF LOCATION OF GOVERNMENT CORNER

North east Corner of Section 28, Township 36, Range 30, _____ P.M.

STATE OF MINNESOTA, County of Benton

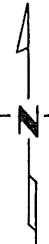
At the corner location shown on the sketch:

On 3-23-81 found a field stone with drill hole
DATE

left monument as found, lowered monument, removed monument (explain)

On 3-23-81 placed a Benton Co. cast iron monument
DATE

SKETCH OF REFERENCE TIES

 Refer to next page

Statement of evidence relative to this corner location is on back of page.

I hereby certify that this document and the data contained herein was prepared by me or under my direct supervision.

William F. Lunsar 3-23-81
SIGNATURE DATE

Registration No. 9394

- Land Surveyor, Professional Engineer
 County Surveyor, County Engineer

County Recorder
OFFICE OF THE REGISTER OF DEEDS
County of Benton

I hereby certify that this document was filed in the Reg. of Deeds office at 30 P.M. on the 7th day of April A.D., 1981

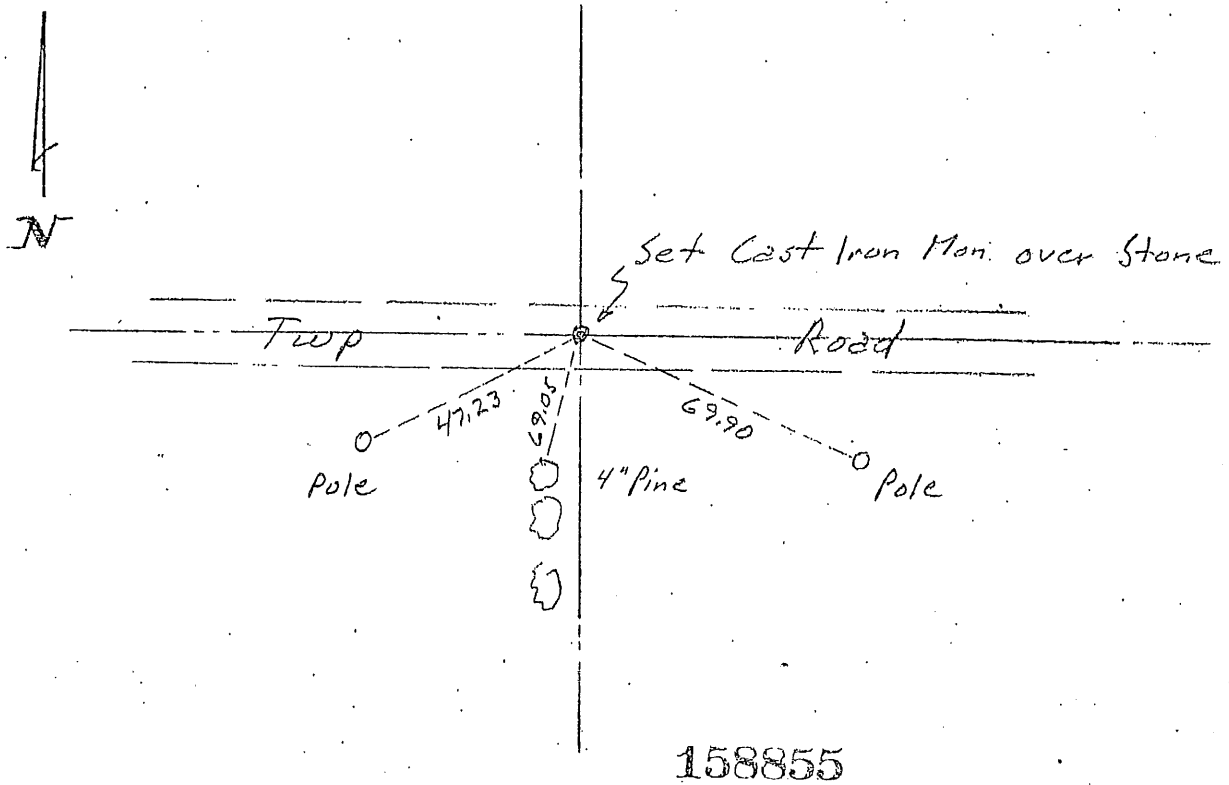
County Recorder
Register of Deeds F.A. Johnson
By _____, Deputy

DOCUMENT NO. 158855

CERTIFICATE OF LOCATION OF GOVERNMENT CORNER

I hereby certify that on the 23rd day of March, 1981
 I did find _____ the Northeast corner of Section 28,
Twp. 36, Rg. 30, Benton County, Minnesota, which
 was evidenced by a field stone with drill hole 16 inches below
road surface. Stone fits well with one remaining tie from
M.B. Lang records and measurements given on right of way map
of T.H. #23.

I further certify that in order to perpetuate said corner I did
 at the exact location thereof place a permanent marker consisting
 of a Benton County cast iron monument. and that
 I did establish witness or reference monuments as shown below:



158855

I hereby certify that the
 above is true and correct.
 and that I am a registered
 Land Surveyor under the laws
 of the State of Minnesota.

William P. Johnson
 Minn. Registration No. 9394

Office of the County Recorder,
Benton County, Minn.

I hereby certify that the within
 instrument was filed for record
 in this office on the 7th day of
April, 1981. 3 P.M.

F. A. Johnson
 County Recorder

By _____ Deputy.