

Certified, Filed and or Recorded on
Feb. 12, 2010 AT 12:51PM

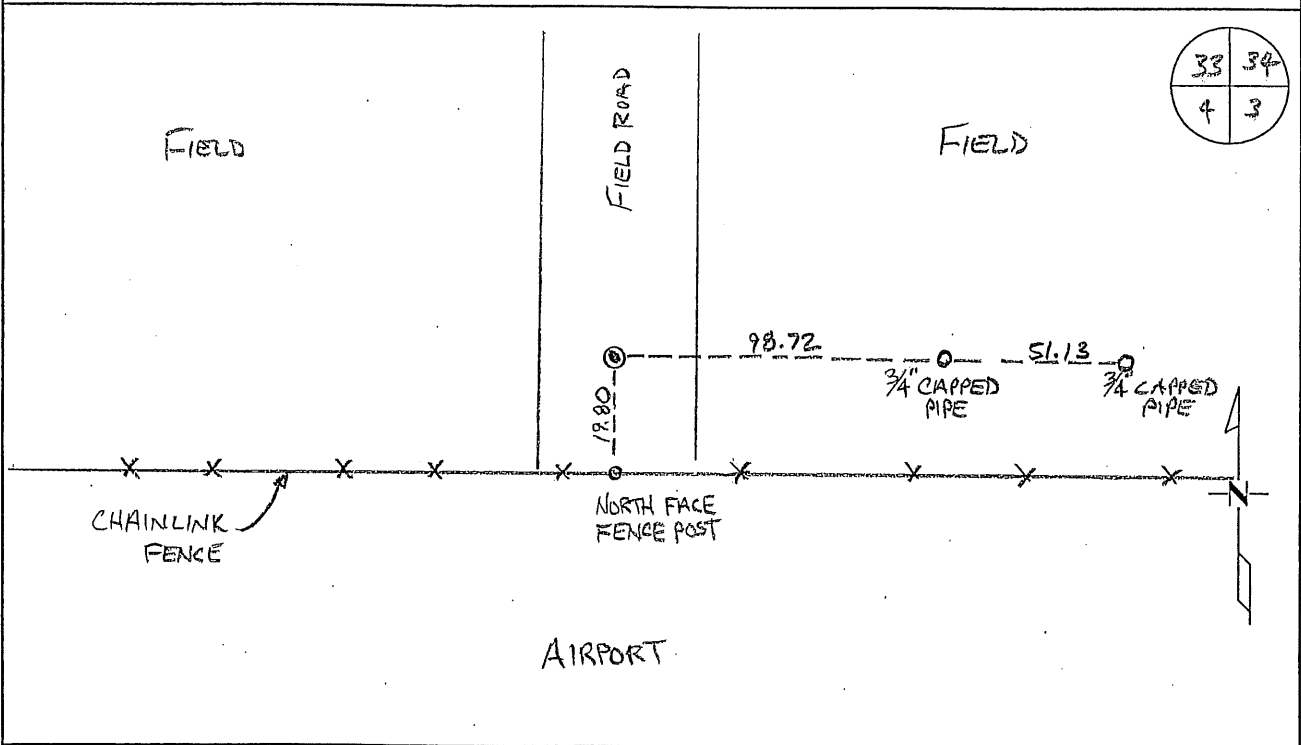
Signed: Ju
MARILYN J NOVAK G V I
BENTON COUNTY MINNESOTA
MARILYN J NOVAK
COUNTY RECORDER

CERTIFICATE OF LOCATION OF GOVERNMENT CORNER

SOUTHEAST Corner of Section 33, Township 36, Range 30
4TH Principal Meridian, State of Minnesota, County of Benton

At the corner location shown on the sketch:

- On 01/06/10 found a CAST IRON MONUMENT
- left monument as found lowered monument removed monument (explain)
- On _____ placed an _____



Statement of evidence for this corner location is on back of this page.

I hereby certify that this document was researched and prepared by me or under my direct supervision and that I am a licensed Land Surveyor under the laws of the State of Minnesota.

Signature Jerome C. Wittstock
Benton County Surveyor
License No. 19552

Date: 02/05/2010

Benton County Surveyor's Office
Jerome C. Wittstock, County Surveyor
Minnesota License No. 19552

Statement of Evidence:

L334

The Southeast Corner of Section 33, Township 36 North, Range 30 West, Minden Township, 4th Principal Meridian, Benton County, Minnesota.

1849 Original US General Land Office survey set a wood post in a mound at this location.

Pre 1940 MN/DOT notes for possible TH 95 by C. H. West, LS, show square stone monument in place.

1969 Delbert Rieke, LS 5094, found a granite monument and set a cast iron monument at the location. A Sherburne County Certificate of Location (#112154) was made.

1992 Sherburne County Surveyor's Office found broken CIM and place new CIM with reference irons set to the east.

County Coordinates converted from Sherburne County Coordinates
NAD83 (1986 Adjustment)
N - 100079.99
E - 495137.29

2003 County Coordinates Obtained by GPS (CIM)
NAD 83 (1996 Adjustment)
N- 100080.324
E- 495136.798

2009 Westwood Professional Services, Inc. found a CIM in the center of a field road approximately 19.8 feet north of and east-west fence. A distance of 2682.65 feet was measured to the East Quarter corner of Section 33. Reference irons to the east as noted on 1992 Certificate of Location by Sherburne County were found and verified.