

MARILYN J. NOVAK  
COUNTY RECORDER  
BY Marilyn J. Novak DEPUTY

OFFICE OF  
BENTON COUNTY RECORDER  
BENTON COUNTY, MN  
CERTIFIED TO BE FILED  
AND/OR RECORDED ON

295385

2003 FEB 12 P 2:51

# CERTIFICATE OF LOCATION OF GOVERNMENT CORNER

EAST QUARTER Corner of Section 1, Township 36, Range 30

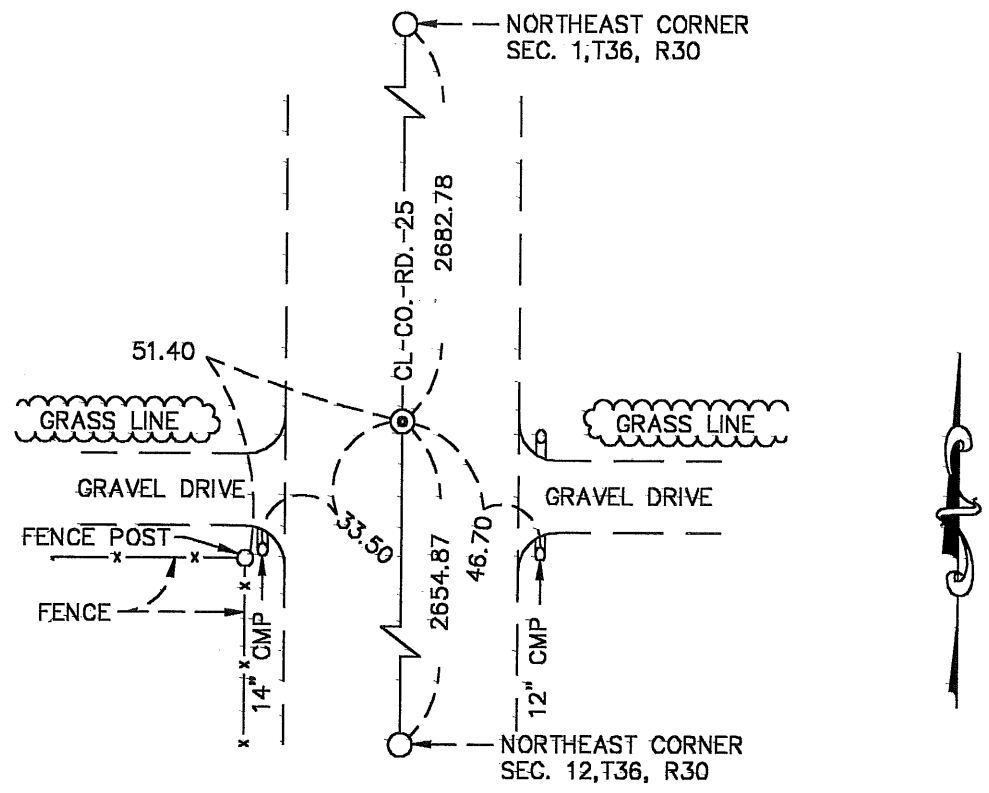
4TH Principal Meridian, State of Minnesota, County of BENTON

At the corner location shown on the sketch:

On \_\_\_\_\_ found a \_\_\_\_\_  
DATE

left monument as found     lowered monument     removed monument (explain)

On 01-26-03 placed a PK NAIL AT CENTER LINE CO. RD. 25 ON A STRAIGHT LINE  
DATE  
BETWEEN SECTION CORNERS.



Statement of evidence for this corner location is on back of this page.

I hereby certify that this document was researched and prepared by me or under my direct supervision and that I am a licensed Land Surveyor under the laws of the State of Minnesota.

Signature [Signature] Date 1-29-2003 License No. 23044

Title:  Land Surveyor     Professional Engineer     County Surveyor     County Engineer

**Statement of Evidence:**

The East Quarter Corner of Section 1, Township 36 North, Range 30 West, Minden Township, 4<sup>th</sup> Principal Meridian, Benton County, Minnesota.

1849 Original US General Land Office survey set a wood post at the corner location and bearing trees were recorded.

4"Blk Oak	S 58 ½ E	67 links
4"Blk Oak	N 29 W	42 links

A line tree was noted as an 18"Blk Oak East 23.24 chains.

2003 Brown Herkenhoff Engineers and Land Surveyors found no evidence of a corner monument and set a PK nail at the intersection of a line determined by the Northeast corner of Section 1, T36N, R30W and the Northeast Corner of Section 12, T36N, R30W and on the westerly extension of a fence line projected from the East Quarter Corner of Section 6, T36N, R29W, which also falls on the extension of a field line to the west. This position falls on the centerline of County State Aid Highway No. 25. The distance to the Northeast Corner of Section 1 is 2682.78 feet and 2654.87 feet to the Southeast Corner of said Section, this position falls within 13.9 feet of lost position.