

A 368326

Certified, Filed and or Recorded on  
Aug. 24, 2009 AT 08:10AM

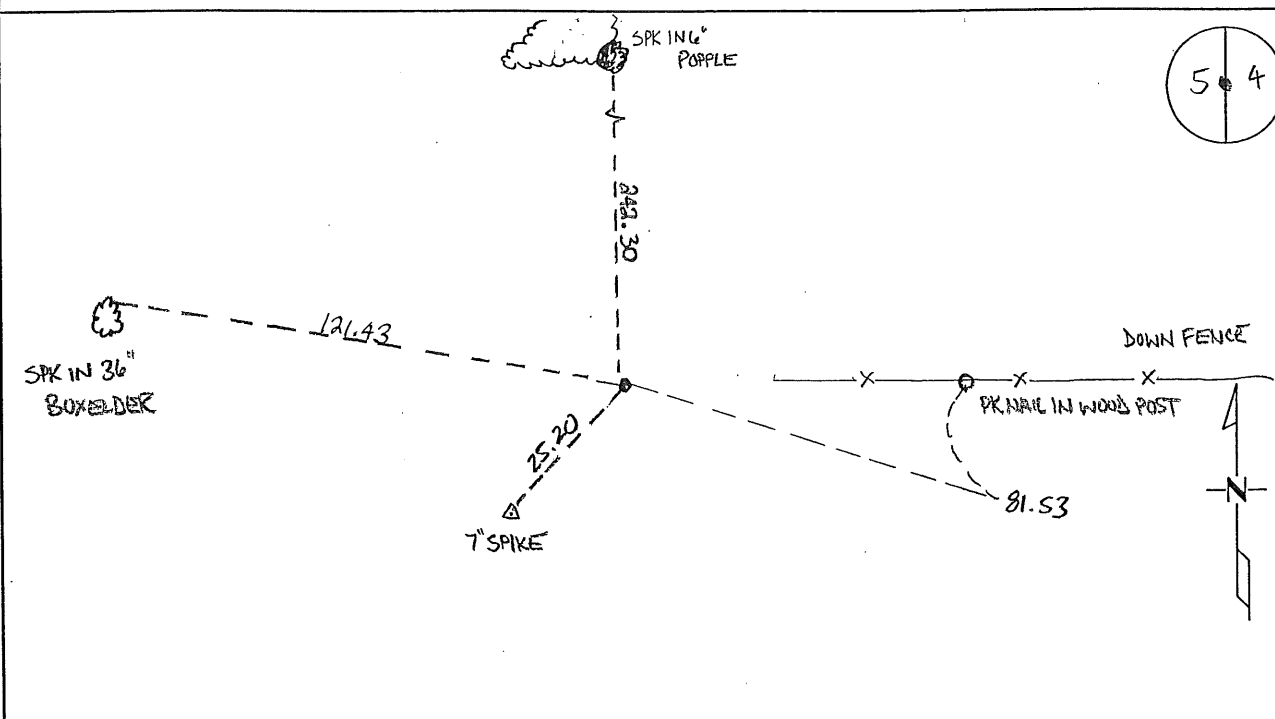
Signed: CR  
MARILYN J NOVAK G V I  
BENTON COUNTY MINNESOTA  
MARILYN J NOVAK  
COUNTY RECORDER

# CERTIFICATE OF LOCATION OF GOVERNMENT CORNER

EAST QUARTER Corner of Section 5, Township 37, Range 30  
4TH Principal Meridian, State of Minnesota, County of Benton

At the corner location shown on the sketch:

- On 07/06/09 found a 1/2" I.P. RLS # 939A
- left monument as found       lowered monument       removed monument (explain)
- On \_\_\_\_\_ placed an \_\_\_\_\_



Statement of evidence for this corner location is on back of this page.

I hereby certify that this document was researched and prepared by me or under my direct supervision and that I am a licensed Land Surveyor under the laws of the State of Minnesota.

Signature Jerome C. Wittstock  
Benton County Surveyor  
License No. 19552

Date: 21 August 2009

Benton County Surveyor's Office  
Jerome C. Wittstock, County Surveyor  
Minnesota License No. 19552

**Statement of Evidence:**

G053

East Quarter Corner of Section 5, Township 37 North, Range 30 West, 4<sup>th</sup> Principal Meridian, Mayhew Lake Township, Benton County, Minnesota.

- 1852 Original US General Land Office survey established corner marked by a wood post with bearing trees noted as:
- |             |        |           |
|-------------|--------|-----------|
| 12" Blk Oak | N 19 W | 209 links |
| 6" Aspen    | N 19 E | 100 links |
- 2002 No resurvey information was found on this corner in the Benton County records.
- 2009 Westwood Professional Services, Inc. found a 1/2-inch iron pipe capped 9394 at the intersection of down fences from the east and south. The distance south fits the GLO distance within 10 feet and the distance north is 150 feet long of the GLO distance. Many closing distances along the north line of the townships are measure extremely long in Benton County. Believing the found pipe and down fences to the east and south to be the best available obliterated evidence, the pipe was left in place, located and reference ties were taken as shown.

Coordinates Obtained by GPS  
NAD 83 (1996 Adjustment)  
N-161469.960  
E-489754.662