

3-110

A 372833

Certified, Filed and or Recorded on  
Mar. 16, 2010 AT 12:36PM

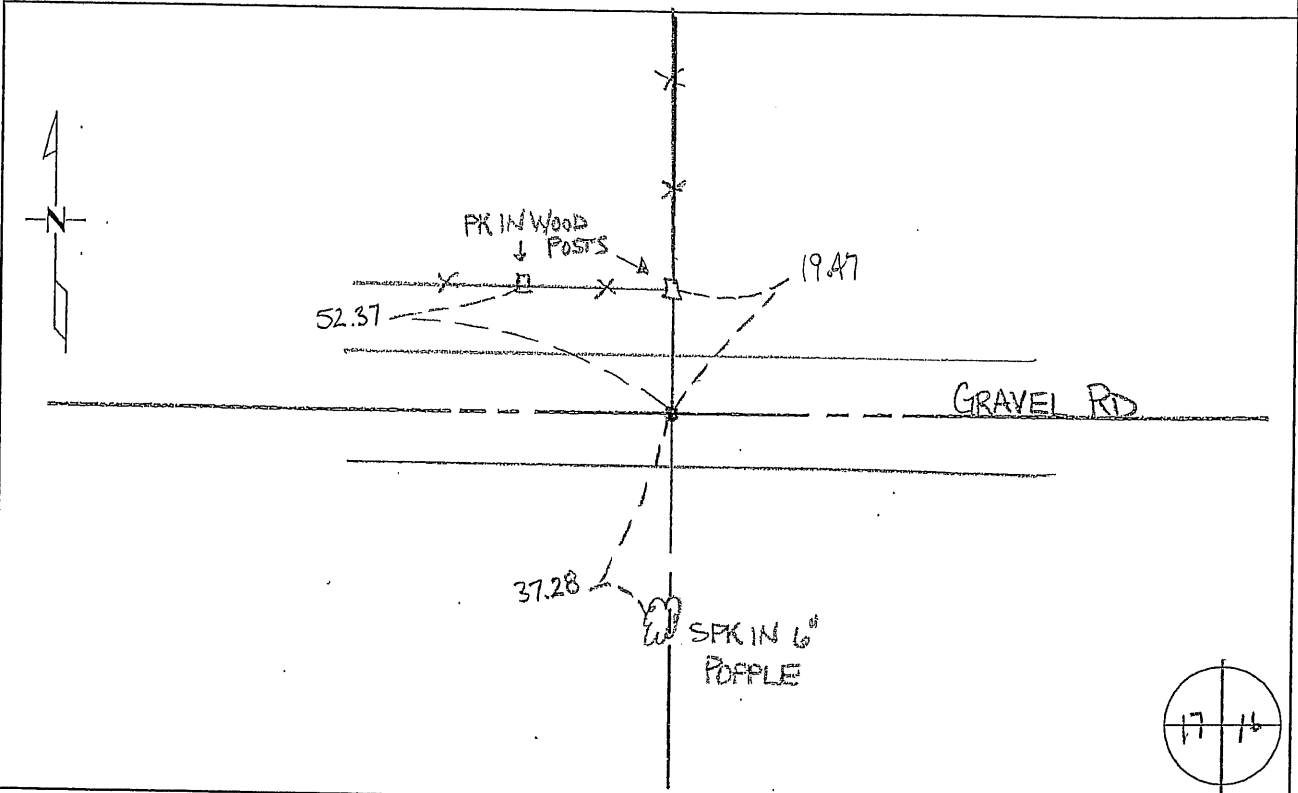
Signed: CK  
MARILYN J NOVAK G V I  
BENTON COUNTY MINNESOTA  
MARILYN J NOVAK  
COUNTY RECORDER

### CERTIFICATE OF LOCATION OF GOVERNMENT CORNER

EAST QUARTER Corner of Section 17, Township 37N, Range 30W  
4TH Principal Meridian, State of Minnesota, County of Benton

At the corner location shown on the sketch:

- On 01/23/08 found a 1/2" OPEN I.P.  
DATE
- left monument as found     lowered monument     removed monument (explain)
- On \_\_\_\_\_ placed an \_\_\_\_\_  
DATE



Statement of evidence for this corner location is on back of this page.

I hereby certify that this document was researched and prepared by me or under my direct supervision and that I am a licensed Land Surveyor under the laws of the State of Minnesota.

Signature Jerome C. Wittstock Date 3/16/2010 License No. 19552  
Title:  Land Surveyor     Professional Engineer     County Surveyor     County Engineer

**Statement of Evidence:**

**G173**

East Quarter Corner of Section 17, Township 37 North, Range 30 West, 4<sup>th</sup> Principal Meridian, Mayhew Lake Township, Benton County, Minnesota.

1852 Original US General Land Office survey established corner marked by a wood post with bearing trees noted as:

10" Aspen	S 30 E	220 links
8" Aspen	S 6 1/2 W	296 links

1882 Affidavit (Doc. No. 26944-Book 1 of Misc., page 95) in 1908 by Wm. Dunsmore states that he owned the SE ¼ of Section 17, T 37, R30 in 1882 and that he had the land surveyed by Mr. Cronk, County Surveyor, and that the line fence was built between Sections 16 and 17 according to said survey and the government marks found.

2002 No resurvey information was found on this corner in the Benton County records.

2008 Westwood Professional Services Inc. found a ½" open iron pipe which falls 4.5 feet east and 2.5 feet south of the lost position. The iron pipe falls in the east-west centerline of a gravel road and on a fence to the north. The iron pipe is accepted as marking the obliterated corner position, new reference ties were taken and coordinates were acquired.

Coordinates Obtained by GPS  
NAD 83 (1996 Adjustment)  
N-150797.309  
E-489685.961