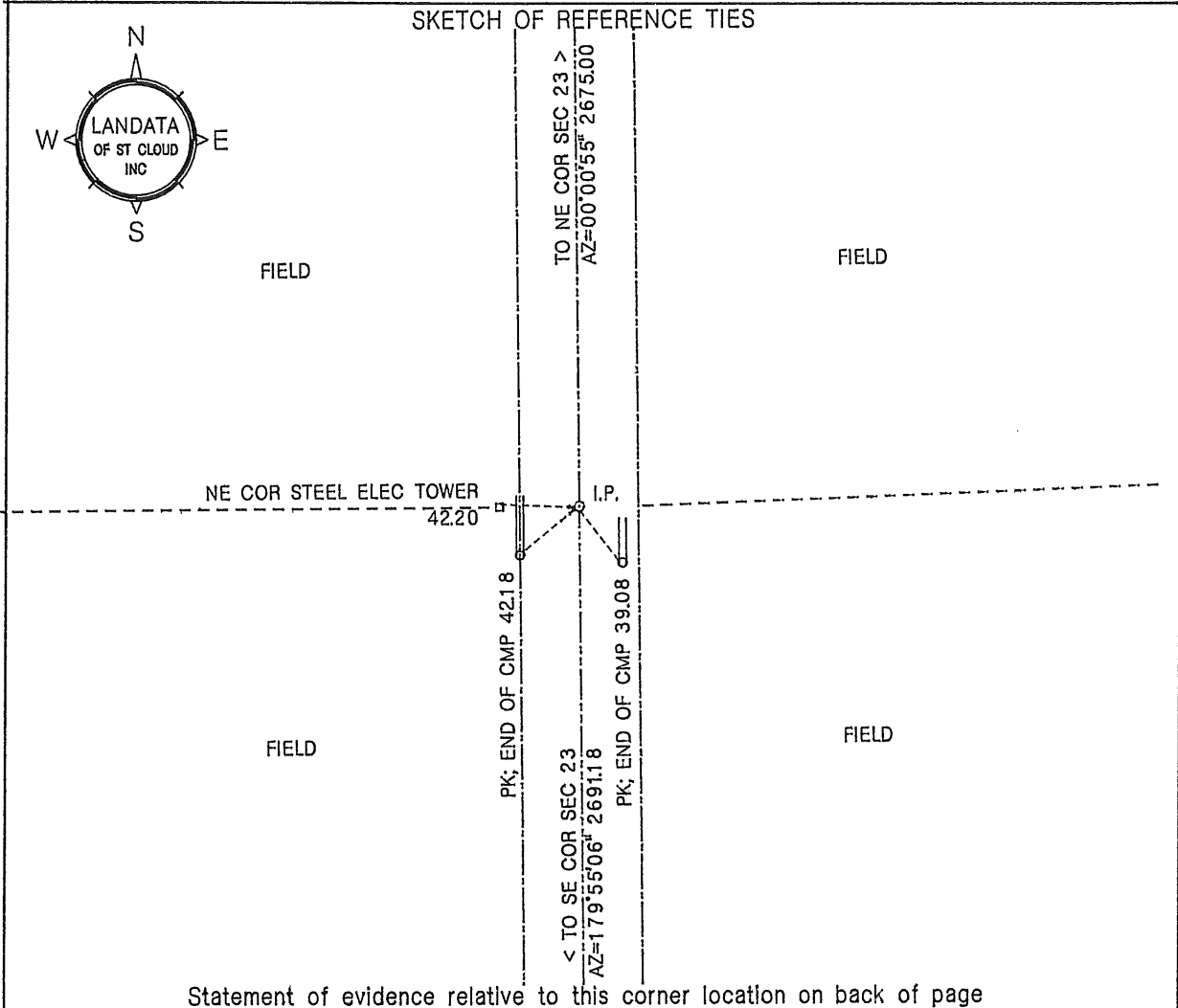


CERTIFICATE OF LOCATION OF GOVERNMENT CORNER

EAST QUARTER corner of Section 23, Township 37, Range 30, 4th P.M.
Benton County, Minnesota.

On Aug 12, 1999, a one half inch iron pipe (I.P.) was found at this location.



Statement of evidence relative to this corner location on back of page

I hereby certify that this document and the data contained herein was prepared by me or under my direct supervision.

William F. Lunser 1-24-02
William F. Lunser, L.S. Date
Mn Reg No 9394

OFFICE OF THE COUNTY RECORDER
Benton County, Minnesota
I hereby certify that this document was filed in this office at ___:___ M. on the ___ day of _____, 20__.

County Recorder _____

By _____, Deputy

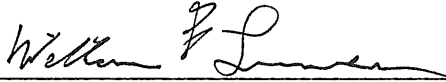
DOCUMENT NO. _____

STATEMENT OF EVIDENCE:

No records were found to indicate remonumentation of this corner after its original placement by the U.S. Government Survey.

A one half inch iron pipe was found on the centerline of a north-south road at the intersection thereof with well defined occupation lines east and west.

The found iron pipe was apparently placed using obliterated methods and therefore accepted as the best evidence of the original government corner.



William F. Lunser, L.S.

283107

OFFICE OF
BENTON COUNTY RECORDER
BENTON COUNTY, MN
CERTIFIED TO BE FILED
AND/OR RECORDED ON

FEB 21 4 15 PM '02

MARILYN J. NOVAK
COUNTY RECORDER

BY *Marilyn J. Novak*
REC'D