

# CERTIFICATE OF LOCATION OF GOVERNMENT CORNER

EASTQUARTER Corner of Section 25, Township 37, Range 30, \_\_\_\_\_ P.M.

STATE OF MINNESOTA, County of BENTON

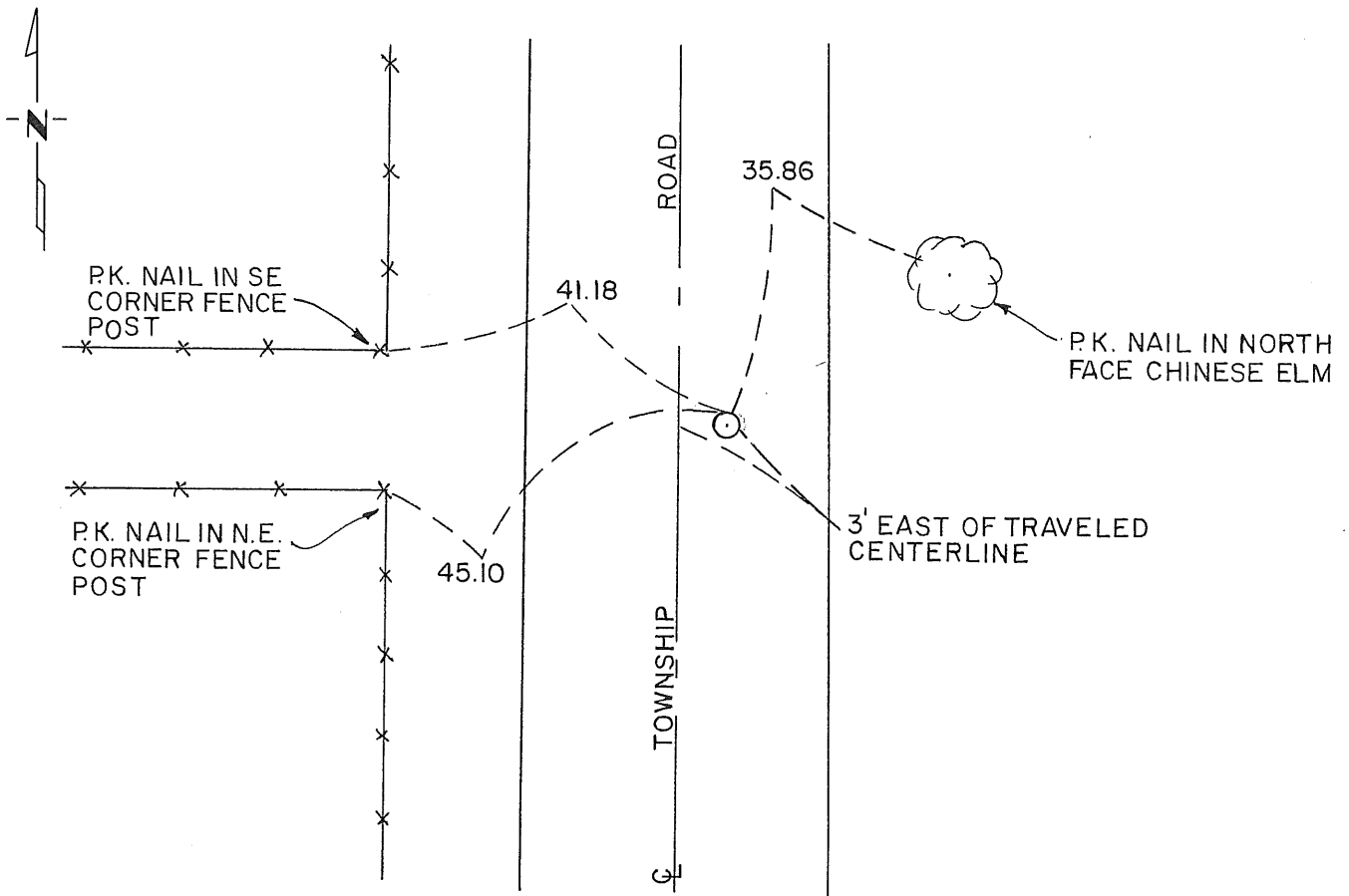
At the corner location shown on the sketch:

On \_\_\_\_\_ found a \_\_\_\_\_  
DATE

left monument as found,  lowered monument,  removed monument (explain)

On 11-4-92 placed a CAST IRON MONUMENT  
DATE

### SKETCH OF REFERENCE TIES



Statement of evidence relative to this corner location is on back of page. **213104**

I hereby certify that this document and the data contained herein was prepared by me or under my direct supervision.

Sidney P. Williamson 1/29/93  
SIGNATURE DATE

Registration No. 10918

Land Surveyor,  Professional Engineer

County Surveyor,  County Engineer

OFFICE OF THE COUNTY RECORDER

County of Benton

I hereby certify that this document was filed in the Co. Recorders office at 2:30 P.M. on the 16 day of February A.D., 19 93

County Recorder Alice C. Engelmeier

By JW, Deputy

DOCUMENT NO. 213104

Statement of Evidence:

1. Post set by U.S. Government Survey in 1855
2. No record of corner in survey books in Benton County Highway Department
3. On 4 November 1992 Williamson-Kotsmith, Inc. set a cast iron monument on single proportionate measurement between the northeast corner and the southeast corner of Section 25