

Certified, Filed and or Recorded on  
Dec. 16, 2008 AT 01:57PM

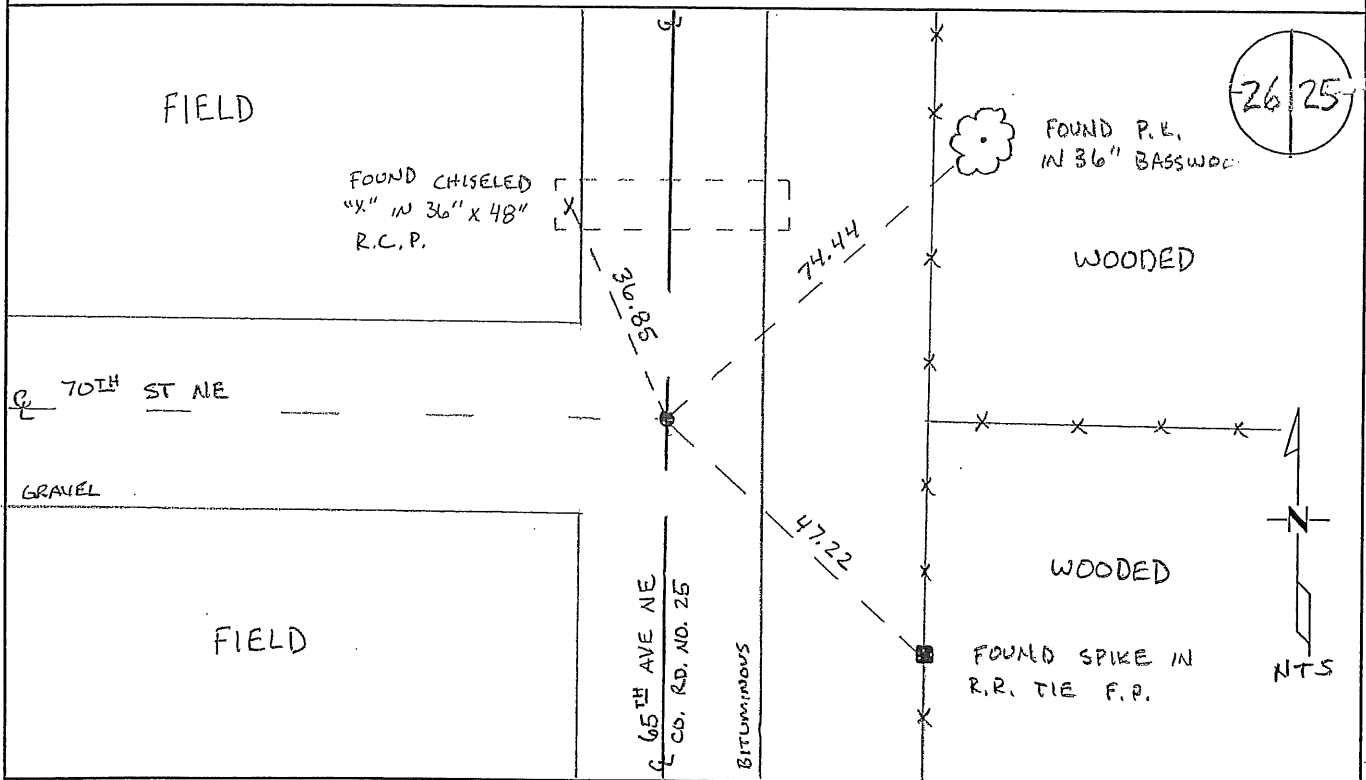
Signed: BW  
MARILYN J NOVAK 6' V ✓  
BENTON COUNTY MINNESOTA  
MARILYN J NOVAK  
COUNTY RECORDER

# CERTIFICATE OF LOCATION OF GOVERNMENT CORNER

EAST QUARTER Corner of Section 26, Township 37N, Range 30W  
4TH Principal Meridian, State of Minnesota, County of Benton

At the corner location shown on the sketch:

- On 11/13/08 found a CAST IRON MONUMENT DOWN 0.7'
- left monument as found       lowered monument       removed monument (explain)
- On 11/13/08 placed an PK NAIL WITH BENTON COUNTY SURVEYOR DISK  
OVER MONUMENT FLUSH WITH ROAD SURFACE



Statement of evidence for this corner location is on back of this page.

I hereby certify that this document was researched and prepared by me or under my direct supervision and that I am a licensed Land Surveyor under the laws of the State of Minnesota.

Signature M. Lewis  
Deputy Benton County Surveyor  
License No. 46170

Date: 12/12/08

Benton County Surveyor's Office  
 Nancy H. Lewis, Deputy County Surveyor  
 Minnesota License No. 46170

**Statement of Evidence:****G263**

East Quarter Corner of Section 26, Township 37 North, Range 30 West, Mayhew Lake Township, 4<sup>th</sup> Principal Meridian, Benton County, Minnesota.

- 1852 Original US General Land Office survey set a wood post at this location and bearing trees were recorded.  
     16" Elm N 32 W 33 links  
     12" Elm N 72 E           43 links
- 1941 County Engineer's Notebook No. 150 contains a road survey for CAR 25 running south to north on section line. Corner is shown marked by a spike set in center of road with town road west and fence line east. Ties:  
     FP     E       25.7'  
     FP     SE      31.7'  
 Stationing gives distances of 2628.2 feet to the SE corner and 2617.0 feet to the NE corner with a delta angle of 0-05' right.
- 1944 County Engineer's Notebook No. 164 contains a road survey for CAR 25 running south to north on section line. Corner is shown marked by a hub set in center of road with town road west and fence line east. Ties:  
     18" W. Oak     NE     68.5'  
     15" W. Oak     E       70.3'  
 Stationing gives distances of 2627.3 feet to the SE corner and 2618.8 feet to the NE corner with a delta angle of 0-07' right.
- 1969 County Engineer's Notebook No. 288 contains a road survey for CSAH No. 25 running south to north on section line. Corner is shown marked by a nail set in center of road with town road west and fence east. Ties:  
     TP               SE     49.85  
     18" Elm NE     49.4  
 Stationing gives distances of 2629.7 feet to the SE corner and 2616.2 feet to the NE corner with a delta angle of 0-06 1/2 ' right.
- 1990 Paul Wellen, LS 10461, set a cast iron monument at the intersection of the centerlines of roads north/south/west. He filed a Certificate of Location (#200724).
- 2002 County Coordinates Obtained by GPS to CIM  
 NAD 83 (1996 Adjustment)  
 N- 140116.377  
 E- 505355.223
- 2008 The County Surveyor's Office searched and found Wellen's cast iron monument at the intersection of a north-south road (County Road No. 25) and a west gravel road (70<sup>th</sup> Street N.E.) and on line with an east fence line. The position gives distances to the SE Cor. and NE Cor. of 2615.72 feet and 2629.16 feet and a delta angle of 0-05'-59" right, which agrees with the 1941 measurements to same. Surveyor accepts the CIM position and set a PK nail with a Benton County Surveyor disk over the monument flush with the bituminous surface. The 2002 coordinates were verified and ties were updated.

# CERTIFICATE OF LOCATION OF GOVERNMENT CORNER

EAST 1/4 Corner of Section 26, Township 37, Range 30, 4TH P.M.

STATE OF MINNESOTA, County of BENTON

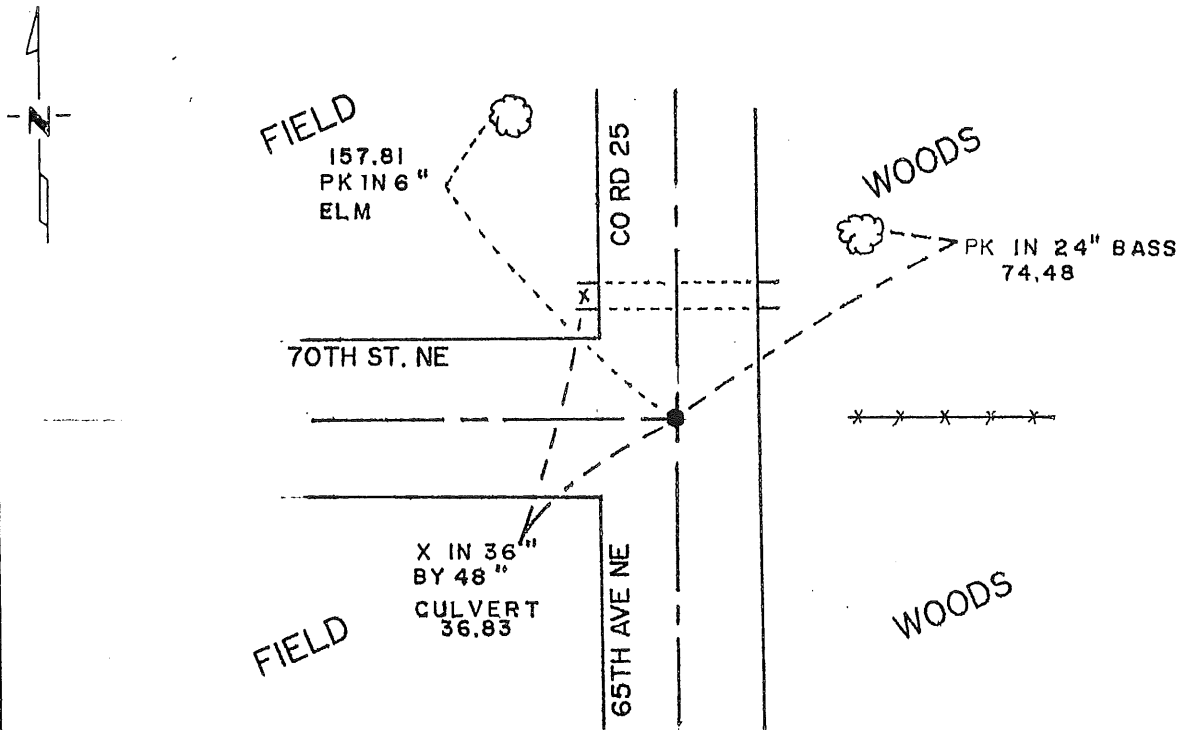
At the corner location shown on the sketch:

On \_\_\_\_\_ found a \_\_\_\_\_  
DATE

left monument as found,  lowered monument,  removed monument (explain)

On 9/24/90 placed a COUNTY MONUMENT  
DATE

## SKETCH OF REFERENCE TIES



Statement of evidence relative to this corner location is on back of page.

I hereby certify that this document and the data contained herein was prepared by me or under my direct supervision.

[Signature] 11/26/90  
SIGNATURE DATE

Registration No. 10461

Land Surveyor,  Professional Engineer

County Surveyor,  County Engineer

### OFFICE OF THE COUNTY RECORDER

County of \_\_\_\_\_

I hereby certify that this document was filed in the Co. Recorders office at \_\_\_\_\_ .M. on the \_\_\_\_\_ day of \_\_\_\_\_ A.D., 19 \_\_\_\_\_

County Recorder \_\_\_\_\_

By \_\_\_\_\_, Deputy

DOCUMENT NO. \_\_\_\_\_

Statement of Evidence:

East quarter corner of Section 26, T 37 N,  
R 30 W, of the 4th Principal Meridian.

1. During the G.L.O. Survey of 1852, Mr. Edwin James Jr, a U.S. Deputy Surveyor, set a wood post to mark this corner.
2. A search of the Benton County Surveyor records provided no further information for the location of this corner.
3. On September 24, 1990, Paul E. Wellen & Associates, Inc., set a cast iron monument at the center line intersection of road north, south and west and established new reference ties as indicated.

200724

OFFICE OF  
BENTON COUNTY RECORDER  
BENTON COUNTY, MN  
CERTIFIED TO BE FILED  
AND/OR RECORDED ON

Dec 18 1 47 PM '50

ALICE G. ENGELMEYER  
COUNTY RECORDER

BY Jaw DEPUTY