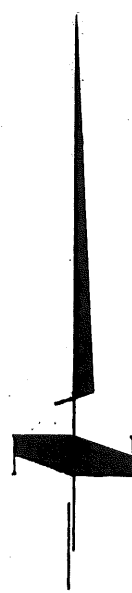
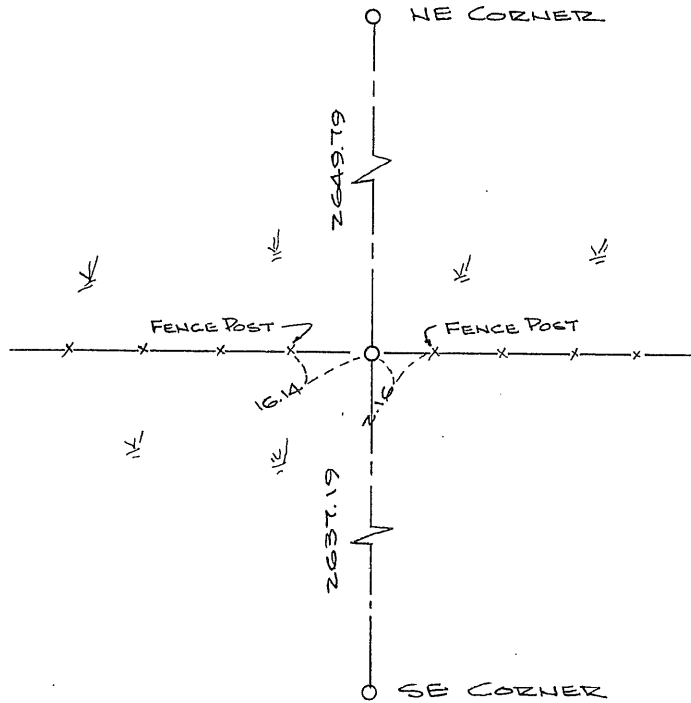


CERTIFICATE OF LOCATION OF GOVERNMENT CORNER

I hereby certify that on the 2 day of January, 1980
I did set the East Quarter corner of Section 32,
Twp. 37, Rg. 30, Benton County, Minnesota, which
was evidenced by a fence line east and west and on line between the
Northeast corner and the Southeast corner of said Section 32-37-30

I further certify that in order to perpetuate said corner I did
at the exact location thereof place a permanent marker consisting
of Benton County Cast Iron Monument and that
I did establish witness or reference monuments as shown below:



160202

I hereby certify that the above
is true and correct and that I am
a registered Land Surveyor under
the laws of the State of Minnesota.

Daryl Miller

Minn. Registration No. 10461

79-175 B-14 P-132
Office of the County Recorder,
Benton County, Minn.

I hereby certify that the within instrument
was filed for record in this office on the
10th day of September, 1981 2 P.M.

F.A. Johnson
County Recorder

By _____ Deputy.