

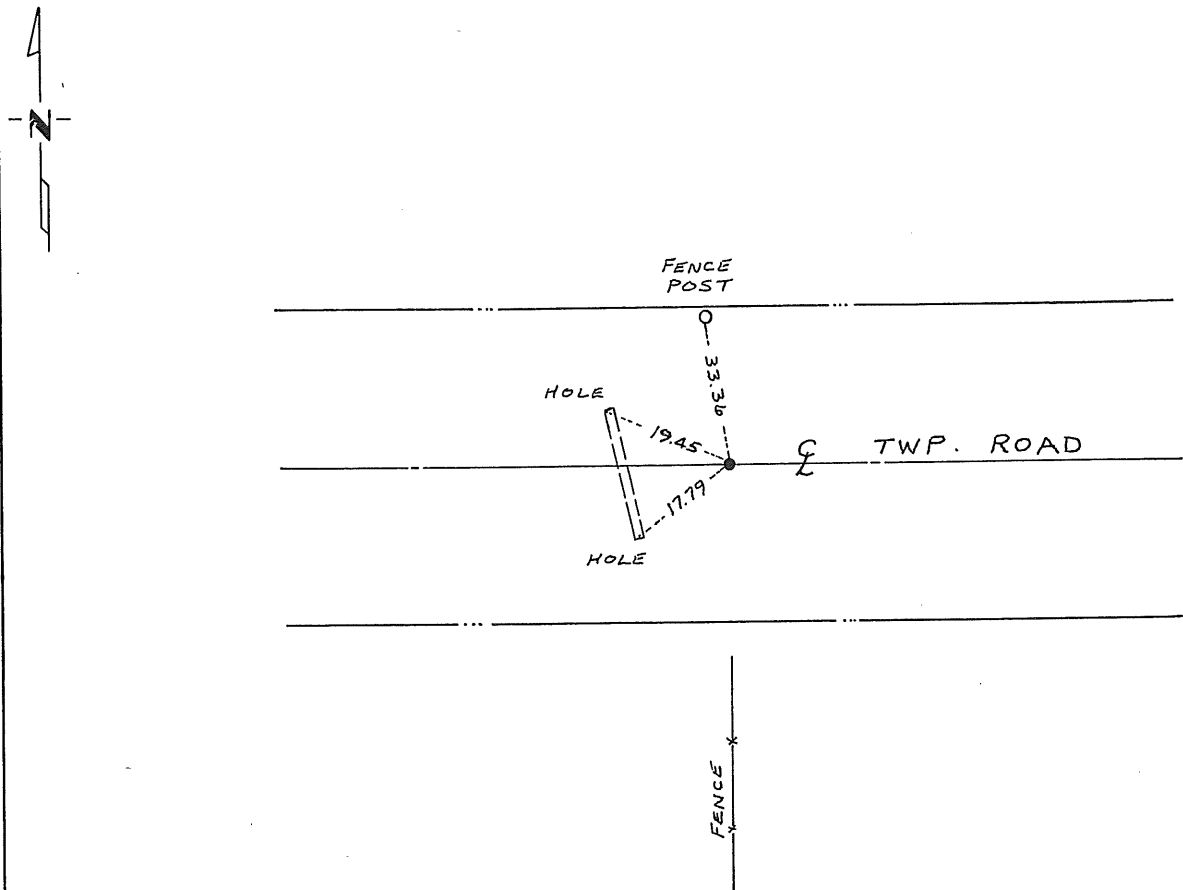
CERTIFICATE OF LOCATION OF GOVERNMENT CORNER

North Quarter _____ Corner of Section 3, Township 37, Range 30, 4th P.M.
STATE OF MINNESOTA, County of Benton

At the corner location shown on the sketch:

- On 11/16/83 found a capped $\frac{1}{2}$ inch iron pipe in center line of _____
DATE
Township Road east-west and fence line south
 - left monument as found, lowered monument, removed monument (explain)
- On _____ placed a _____
DATE

SKETCH OF REFERENCE TIES



Statement of evidence relative to this corner location is on back of page.

I hereby certify that this document and the data contained herein was prepared by me or under my direct supervision.

David J. Ryan 1/3/84
SIGNATURE DATE

Registration No. 12256
 Land Surveyor, Professional Engineer
 County Surveyor, County Engineer

County Recorder
OFFICE OF THE REGISTER OF DEEDS
County of Benton

I hereby certify that this document was filed in the Reg. of Deeds office at 4 P.M. on the 11th day of January A.D., 1984
County Recorder
Register of Deeds F.H. Johnson

By _____, Deputy
DOCUMENT NO. 167990