

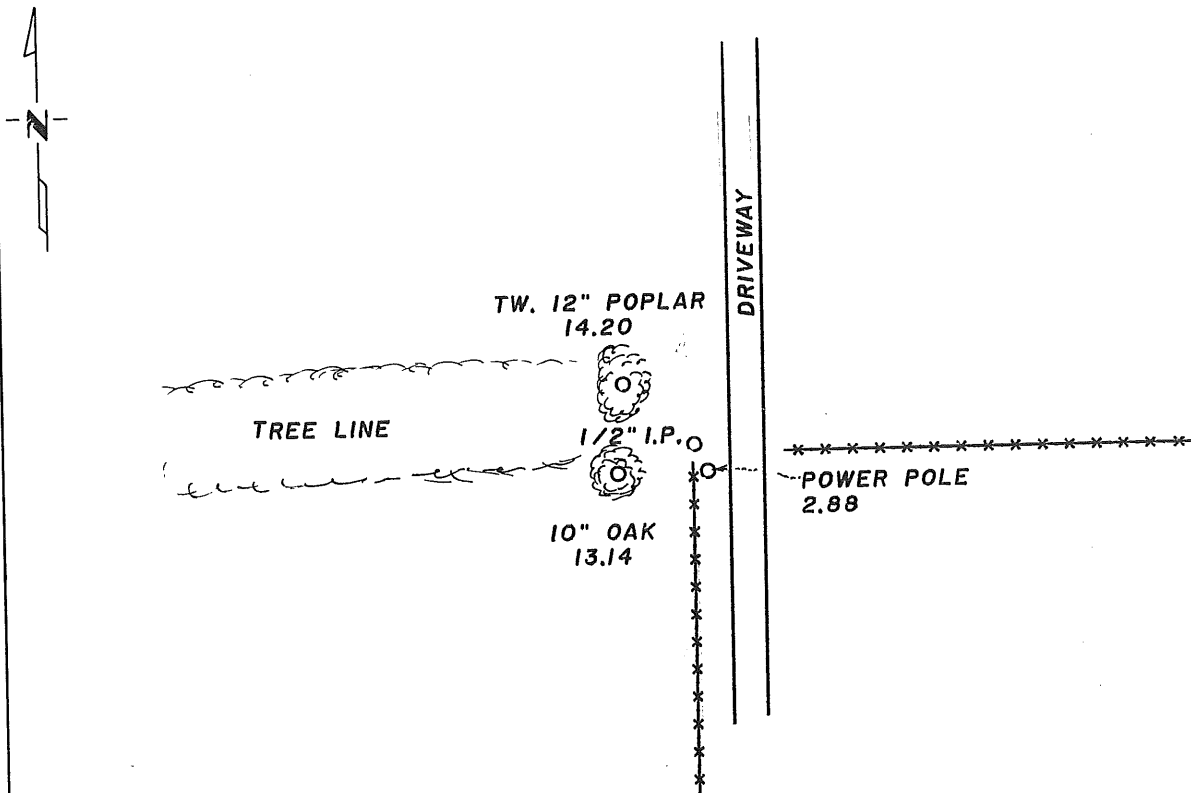
CERTIFICATE OF LOCATION OF GOVERNMENT CORNER

NORTH $\frac{1}{4}$ Corner of Section 17, Township 37, Range 30, 4th P.M.
STATE OF MINNESOTA, County of BENTON

At the corner location shown on the sketch:

- On 6/6/90 found a $\frac{1}{2}$ inch pipe on fence line south and tree line west
DATE
- left monument as found, lowered monument, removed monument (explain)
- On _____ placed a _____
DATE

SKETCH OF REFERENCE TIES



Statement of evidence relative to this corner location is on back of page.

I hereby certify that this document and the data contained herein was prepared by me or under my direct supervision.

David P. Regan 3/13/91
SIGNATURE DATE

Registration No. 12236

- Land Surveyor, Professional Engineer
- County Surveyor, County Engineer

OFFICE OF THE REGISTER OF DEEDS
County of _____

I hereby certify that this document was filed in the Reg. of Deeds office at _____ .M. on the _____ day of _____ A.D., 19 _____

Register of Deeds _____

By _____, Deputy

DOCUMENT NO. _____

Statement of Evidence:

The G.L.O. survey was done in 1852 by Edwin James.

The County Surveyors records were searched and no mention of this corner was found.

On 6/90, Regan Land Surveying, Inc. found a ½ inch iron pipe at this corner and used it for a survey in Section 17.

201752

OFFICE OF
BENTON COUNTY RECORDER
BENTON COUNTY, MO
CERTIFIED TO BE FILED
AND/OR RECORDED ON

MAR 19 12 17 PM '91

ALICE C. ENGELMEYER
COUNTY RECORDER

BY *[Signature]* DEPUTY