

Certified, Filed and or Recorded on  
Mar. 23, 2010 AT 11:47AM

Signed: [Signature]  
MARILYN J NOVAK G V I  
BENTON COUNTY MINNESOTA  
MARILYN J NOVAK  
COUNTY RECORDER

# CERTIFICATE OF LOCATION OF GOVERNMENT CORNER

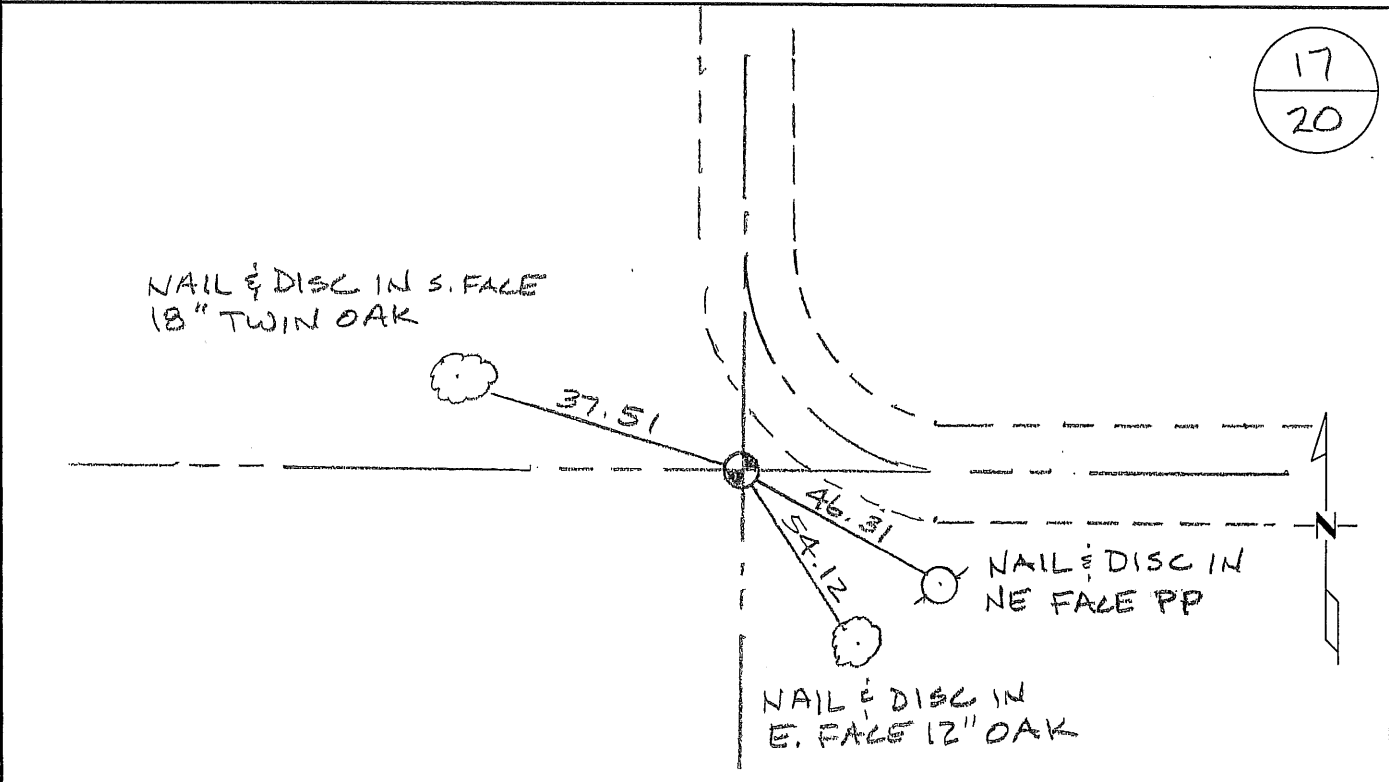
NORTH QUARTER Corner of Section 20, Township 37, Range 30  
4TH Principal Meridian, State of Minnesota, County of Benton

At the corner location shown on the sketch:

On 7/21/2006 found a CAST IRON MONUMENT

left monument as found       lowered monument       removed monument (explain)

On \_\_\_\_\_ placed an \_\_\_\_\_



17  
20

Statement of evidence for this corner location is on back of this page.

I hereby certify that this document was researched and prepared by me or under my direct supervision and that I am a licensed Land Surveyor under the laws of the State of Minnesota.

Signature [Signature]  
Benton County Surveyor  
License No. 19552

Date: 3-22-2010

Benton County Surveyor's Office  
 Jerome C. Wittstock, County Surveyor  
 Minnesota License No. 19552

**Statement of Evidence:****G201**

North Quarter Corner of Section 20, Township 37 North, Range 30 West, Mayhew Lake Township, 4<sup>th</sup> Principal Meridian, Benton County, Minnesota.

- 1852 Original US General Land Office survey set a wood post at this location and bearing trees were recorded.
- |             |        |          |
|-------------|--------|----------|
| 36" Bur Oak | N 32 W | 36 links |
| 13" Bur Oak | S 32 E | 8 links  |
- 1939 County Engineer's Notebook No. 158 contains road survey for CAR No. 20 running from the east along the section line and then north. Corner is shown as an iron pipe at the PI of the road. Ties:
- |            |    |      |
|------------|----|------|
| 18" Ash    | SE | 41.0 |
| 12" W. Oak | S  | 67.5 |
- Stationing gives distances of 2659.8 feet to the NE corner.
- 1959 Notebook No. 158 lists new ties:
- |             |    |       |
|-------------|----|-------|
| PP          | SE | 47.1' |
| Twin W. Oak | W  | 37.1' |
- 1977 Paul Wellen, LS 10461, found a 1/2" iron monument at the P.I. of the road north and east and a fence corner. Filed Certificate of Location (Doc. No. 147251). Ties to possible 1959 ties:
- |                 |    |        |
|-----------------|----|--------|
| PP              | SE | 46.32' |
| 10" Twin W. Oak | W  | 37.51' |
- 2001 Westwood Professional Services, Inc. found a 1" iron pipe at the P.I. of the road north and east. They removed the 1" iron pipe and set a cast iron monument at the location and established reference ties.
- 2001 Westwood Professional Services, Inc. set a cast iron monument at the location of a found/removed 1" X 24" open iron pipe.

Coordinates Obtained by GPS  
 NAD 83 (1996 Adjustment)  
 N-148083.722  
 E-486968.107

# CERTIFICATE OF LOCATION OF GOVERNMENT CORNER

North 1/4 Corner of Section 20, Township 37, Range 30, 4 P.M.

STATE OF MINNESOTA, County of Benton

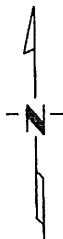
At the corner location shown on the sketch:

On \_\_\_\_\_ found a \_\_\_\_\_  
DATE

left monument as found,  lowered monument,  removed monument (explain)

On \_\_\_\_\_ placed a \_\_\_\_\_  
DATE

## SKETCH OF REFERENCE TIES



Filed under South 1/4 corner Section 17, T37 R30

Certificate #147251

Statement of evidence relative to this corner location is on back of page.

I hereby certify that this document and the data contained herein was prepared by me or under my direct supervision.

\_\_\_\_\_  
SIGNATURE DATE

Registration No. \_\_\_\_\_

- Land Surveyor,  Professional Engineer
- County Surveyor,  County Engineer

OFFICE OF THE REGISTER OF DEEDS  
County of \_\_\_\_\_

I hereby certify that this document was filed in the Reg. of Deeds office at \_\_\_\_\_ .M. on the \_\_\_\_\_ day of \_\_\_\_\_ A.D., 19 \_\_\_\_

Register of Deeds \_\_\_\_\_

By \_\_\_\_\_, Deputy

DOCUMENT NO. \_\_\_\_\_