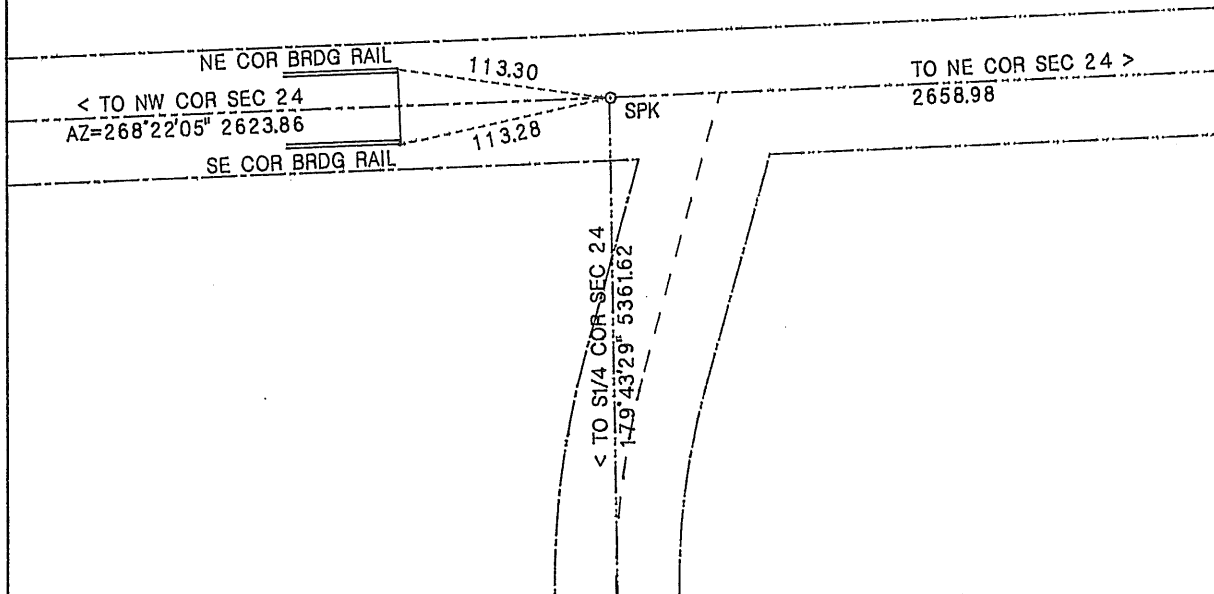
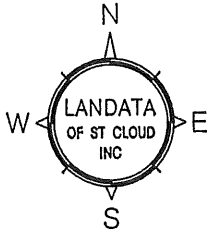


CERTIFICATE OF LOCATION OF GOVERNMENT CORNER

NORTH QUARTER corner of Section 24, Township 37, Range 30, 4th P.M.
Benton County, Minnesota.

On Aug 16, 1999, a rail road spike (SPK) was placed at this location.

SKETCH OF REFERENCE TIES



Statement of evidence relative to this corner location on back of page

I hereby certify that this document and the data contained herein was prepared by me or under my direct supervision

William F. Lunser 1-29-02
 William F. Lunser, L.S. Date
 Mn Reg No 9394

OFFICE OF THE COUNTY RECORDER
Benton County, Minnesota

I hereby certify that this document was filed in this office at ___:___ M. on the ___ day of _____, 20___.

County Recorder _____

By _____, Deputy

DOCUMENT NO. _____


STATEMENT OF EVIDENCE:

No records were found to indicate remonumentation of this corner after its original placement by the U.S. Government Survey.

Recent reconstruction of the county bridge and east-west road appears to have obliterated the original government corner along with subsequent unrecorded remonumentation, if any. A township road, running north from the south quarter corner of Section 24, deflects northeasterly prior to its intersection with the county road, presumably for terrain and safety reasons.

Assuming the centerline of the north-south leg of the township road and the centerline of the county road to be accessories to the corner in question, the sixteenth corner at the center of the NW1/4 of Section 24 was found to fall one foot westerly of an existing fence corner.

The road alignments were therefore accepted as evidence of an obliterated government corner. A railroad spike was place to perpetuate its location.



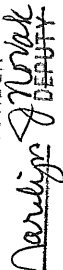
William F. Lunser, L.S.

283106

OFFICE OF
BENTON COUNTY RECORDER
BENTON COUNTY, MN
CERTIFIED TO BE FILED
AND/OR RECORDED ON

FEB 21 4 15 PM '02

MARILYN J. NOVAK
COUNTY RECORDER

By 
~~DEPUTY~~