

Certified, Filed and or Recorded on
Mar. 23, 2010 AT 11:48AM

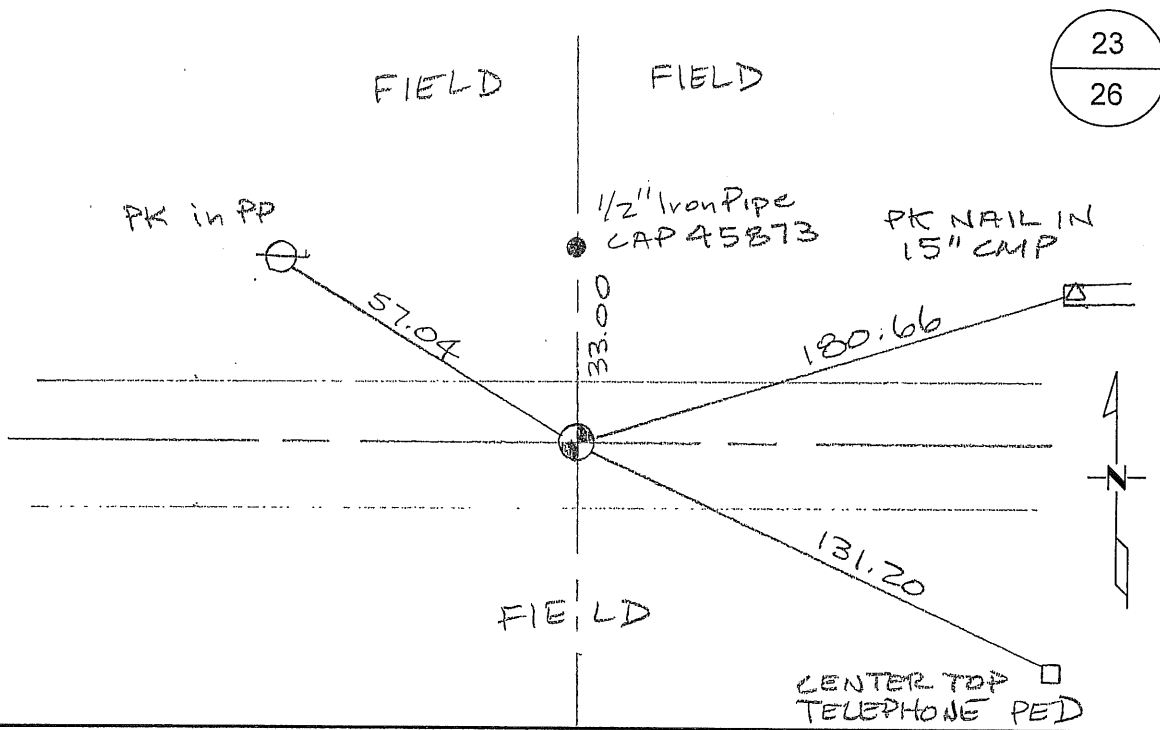
Signed: [Signature]
MARILYN J NOVAK G V I
BENTON COUNTY MINNESOTA
MARILYN J NOVAK
COUNTY RECORDER

CERTIFICATE OF LOCATION OF GOVERNMENT CORNER

North Quarter Corner of Section 26, Township 37, Range 30
4TH Principal Meridian, State of Minnesota, County of Benton

At the corner location shown on the sketch:

- On 2/8/2008 found a 1/2" open iron pipe
- left monument as found lowered monument removed monument (explain)
- On _____ placed an _____



Statement of evidence for this corner location is on back of this page.

I hereby certify that this document was researched and prepared by me or under my direct supervision and that I am a licensed Land Surveyor under the laws of the State of Minnesota.

Signature Jerome C. Wittstock
Benton County Surveyor
License No. 19552

Date: 3-22-2010

Benton County Surveyor's Office
 Jerome C. Wittstock, County Surveyor
 Minnesota License No. 19552

Statement of Evidence:

G261

North Quarter Corner of Section 26, Township 37 North, Range 30 West, 4th Principal Meridian, Mayhew Lake Township, Benton County, Minnesota.

1852 Original US General Land Office survey established corner marked by a wood post with bearing trees noted as.

- | | | |
|----------|------------|---------|
| 5" Aspen | S 44 W | 6 links |
| 6" Aspen | N 45 1/2 W | 7 links |

1890 County Road Book, page 32, contains Surveyor's Report by Felix Parent stating road laid out on section line west and east from this corner. Gives 79.28 chains for the north line of Section 26.

2002 No other resurvey information was found on this corner in the Benton County records.

2008 The Benton County Surveyor's Office found a 1/2" open iron pipe in the east-west centerline of 75TH Street Northeast and on a field line to the north. The distance to the northwest corner is 2622.86 feet and the distance to the northeast corner is 2621.35 feet. The overall mile measures about 12 feet long of Mr. Parent's distance from 1890, though fitting a split of the distance within less than a foot. The iron pipe is accepted as marking the obliterated corner position.

Coordinates Obtained by GPS
 NAD 83 (1996 Adjustment)
 N- 142777.536
 E- 502782.397