

Certified, Filed and or Recorded on  
Mar. 23, 2010 AT 11:49AM

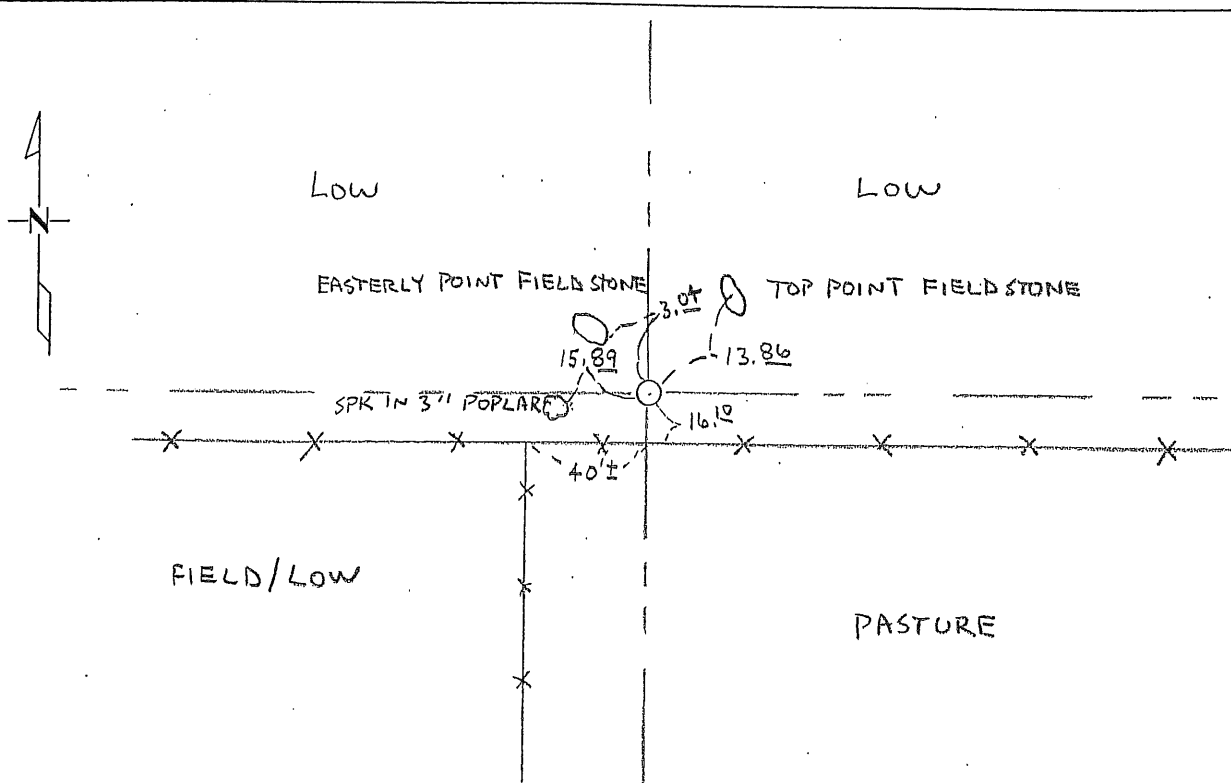
Signed: [Signature]  
MARILYN J NOVAK G V I  
BENTON COUNTY MINNESOTA  
MARILYN J NOVAK  
COUNTY RECORDER

### CERTIFICATE OF LOCATION OF GOVERNMENT CORNER

NORTH QUARTER Corner of Section 28, Township 37, Range 30  
4TH Principal Meridian, State of Minnesota, County of Benton

At the corner location shown on the sketch:

- On \_\_\_\_\_ found a \_\_\_\_\_  
DATE
- left monument as found     lowered monument     removed monument (explain)
- On 8-1-06 placed an 1/2" I.P. # 19552  
DATE



Statement of evidence for this corner location is on back of this page.

I hereby certify that this document was researched and prepared by me or under my direct supervision and that I am a licensed Land Surveyor under the laws of the State of Minnesota.

Signature Jerome C. Wittstock Date 3-22-2010 License No. 19552  
Title  Land Surveyor  Professional Engineer  County Surveyor  County Engineer

Benton County Surveyor's Office  
Jerome C. Wittstock, County Surveyor  
Minnesota License No. 19552

**Statement of Evidence:**

**G281**

North Quarter Corner of Section 28, Township 37 North, Range 30 West, 4<sup>th</sup> Principal Meridian, Mayhew Lake Township, Benton County, Minnesota.

- 1852 Original US General Land Office survey set a wood post at this location and bearing trees were recorded.  
10" Aspen                      S 24 E                      466 links
- 2002 No record evidence of this corner has been found in the Benton County records.
- 2006 The Benton County Surveyor's Office found an east-west fence line and a field fence line (not line fence) south. The east-west fence, when projected west, falls 28 feet south of the section corner and truncates at the west sixteenth (not built to the section corner). Believing the east-west fence to not be built on the section line and the fence south to be a fence of convenience, a ½-inch iron pipe capped RLS 19552 was set at the lost position.

Coordinates Obtained by GPS  
NAD 83 (1996 Adjustment)  
N-142819.723  
E-492124.209