

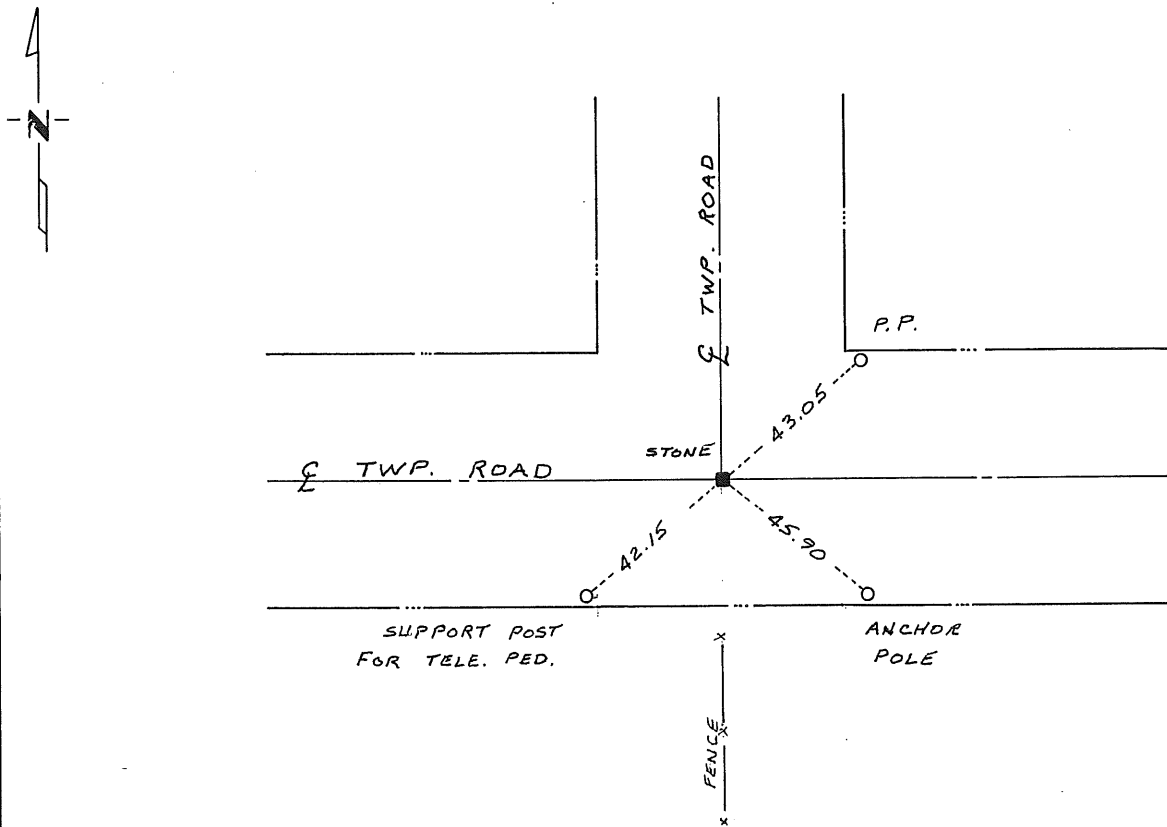
CERTIFICATE OF LOCATION OF GOVERNMENT CORNER

Northeast _____ Corner of Section 4, Township 37, Range 30, 4th P.M.
 STATE OF MINNESOTA, County of Benton

At the corner location shown on the sketch:

- On 11/16/83 found a 6 inch by 6 inch stone monument on center line
 of Township Roads east-west and north
 left monument as found, lowered monument, removed monument (explain)
- On _____ placed a _____
 DATE

SKETCH OF REFERENCE TIES



Statement of evidence relative to this corner location is on back of page.

I hereby certify that this document and the data contained herein was prepared by me or under my direct supervision.

David P. Ryan 1/3/84
 SIGNATURE DATE

Registration No. 12236

- Land Surveyor, Professional Engineer
- County Surveyor, County Engineer

County Recorder
 OFFICE OF THE REGISTER OF DEEDS
 County of Benton

I hereby certify that this document was filed in the Reg. of Deeds office at 4 P.M. on the 11th day of January A.D., 1984

Register of Deeds F.A. Johnson

By _____, Deputy

DOCUMENT NO. 167991