

CERTIFICATE OF LOCATION OF GOVERNMENT CORNER

Northeast Corner of Section 17, Township 37, Range 30, _____ P.M.
STATE OF MINNESOTA, County of Benton

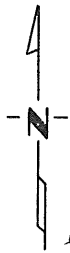
At the corner location shown on the sketch:

On 1-27-77 found a Field Stone at fence corner, fence lines in
North, South, ^{DATE} East and West directions.

left monument as found, lowered monument, removed monument (explain)

On _____ placed a left as found
DATE

SKETCH OF REFERENCE TIES



Refer to next page

Statement of evidence relative to this corner location is on back of page.

I hereby certify that this document and the data contained herein was prepared by me or under my direct supervision.

William T. Lussers 1-27-77
SIGNATURE DATE

Registration No. 9394

Land Surveyor, Professional Engineer

County Surveyor, County Engineer

OFFICE OF THE REGISTER OF DEEDS

County of Benton

I hereby certify that this document was filed in the Reg. of Deeds office at 9 A.M. on the 20 day of December A.D., 1977

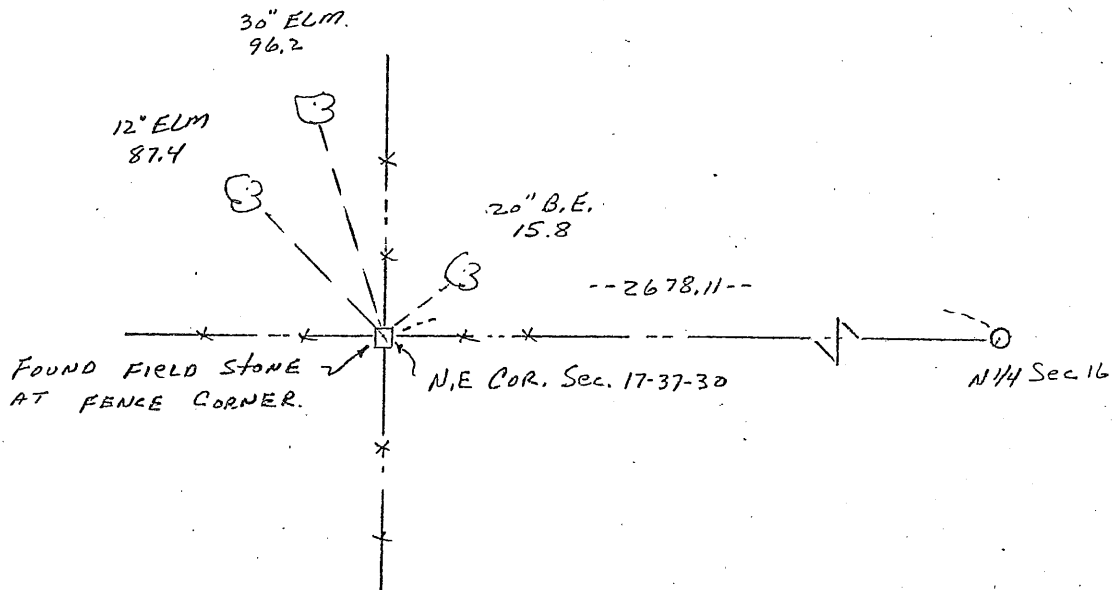
Register of Deeds F. G. Johnson
By _____, Deputy

DOCUMENT NO. 147067

CERTIFICATE OF LOCATION OF GOVERNMENT CORNER

I hereby certify that on the 27 day of January, 1977
 I did Find the Northeast corner of Section 17,
 Twp. 37, Rg. 30, Benton County, Minnesota, which
 was evidenced by Field Stone at fence corner, fence lines
in North, South, East and West directions

I further certify that in order to perpetuate said corner I did
 at the exact location thereof place a permanent marker consisting
 of (left as found) and that
 I did establish witness or reference monuments as shown below:



147067

I hereby certify that the
 above is true and correct
 and that I am a registered
 Land Surveyor under the laws
 of the State of Minnesota.

William D. Linn

Minn. Registration No. 9394

Office of the Register of Deeds,
Benton County, Minn.

I hereby certify that the within
 instrument was filed for record
 in this office on the 20 day of
December, 1977 at 9 A.M.

F. G. Johnson
 Register of Deeds

By _____ Deputy.