

Certified, Filed and or Recorded on
Dec. 16, 2008 AT 01:57PM

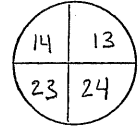
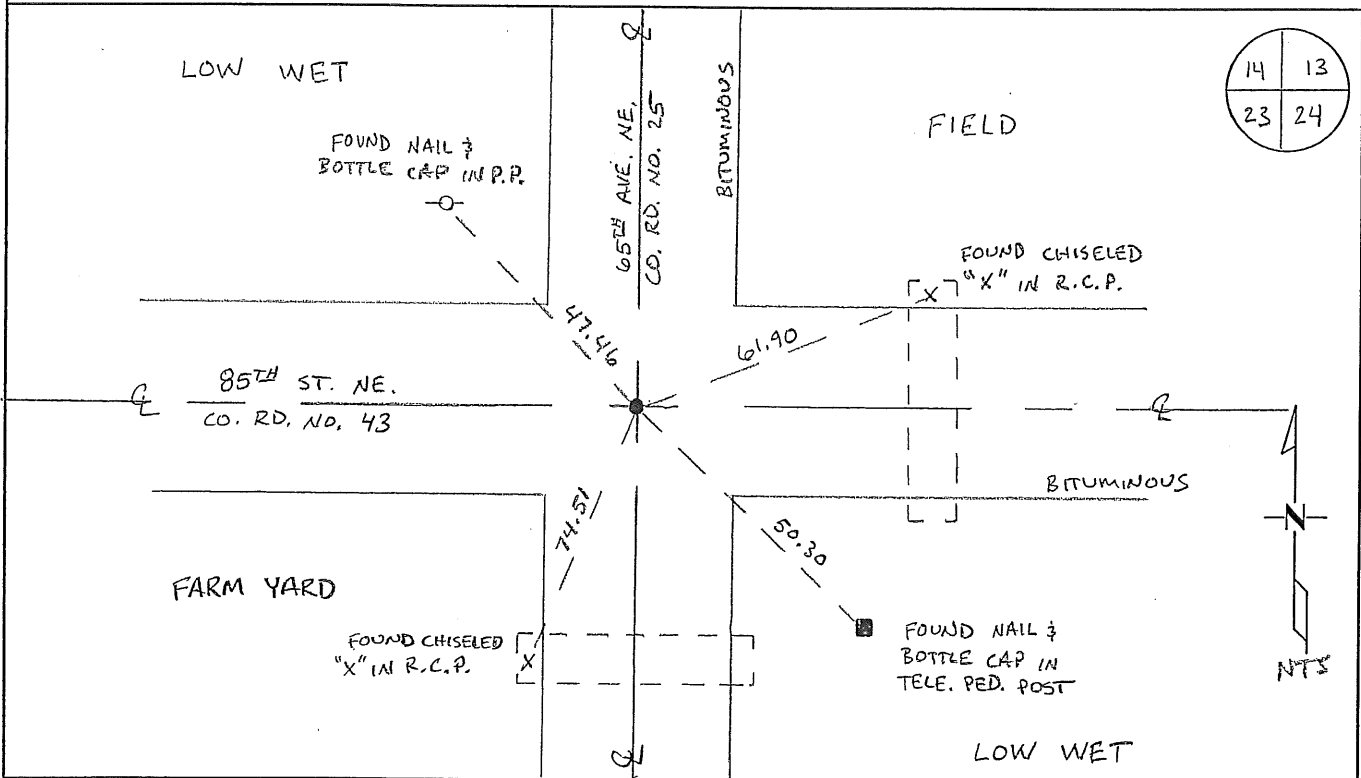
Signed: BW
MARILYN J NOVAK G V ✓
BENTON COUNTY MINNESOTA
MARILYN J NOVAK
COUNTY RECORDER

CERTIFICATE OF LOCATION OF GOVERNMENT CORNER

NORTHEAST Corner of Section 23, Township 37N, Range 30W
4TH Principal Meridian, State of Minnesota, County of Benton

At the corner location shown on the sketch:

- On 11/13/08 found a EAST IRON MONUMENT DOWN 0.2'
- left monument as found lowered monument removed monument (explain)
- On _____ placed an _____



Statement of evidence for this corner location is on back of this page.

I hereby certify that this document was researched and prepared by me or under my direct supervision and that I am a licensed Land Surveyor under the laws of the State of Minnesota.

Signature M. Lewis
Deputy Benton County Surveyor
License No. 46170

Date: 12/12/08

Benton County Surveyor's Office
 Nancy H. Lewis, Deputy County Surveyor
 Minnesota License No. 46170

Statement of Evidence:

G232

Northeast Corner of Section 23, Township 37 North, Range 30 West, 4th Principal Meridian, Mayhew Lake Township, Benton County, Minnesota.

1852 Original US General Land Office survey established corner marked by a wood post with bearing trees noted as:

6" Willow	N 57 W	14 links
13" Aspen	S 69 E	37 links

1890 County Road Book, page 32, contains Surveyor's Report by Felix Parrent stating road laid out on section lines south and north from this corner.

1939 County Engineer's Notebook No. 158 contains road survey for CAR No. 20 running east to west along the section line. Corner is shown as a hub set in center of road with CAR 25 north and south. Ties:

PP	NW	46.8'
FP	SW	54.9'

1941 County Engineer's Notebook No. 150 contains a road survey for CAR 25 running south to north on section line. Corner is shown marked by a hub set in center of road with CAR 20 east and west. Ties are same as above in 1939.:

FP	E	25.7'
FP	SE	31.7'

1944 County Engineer's Notebook No. 164 contains a road survey for CAR 25 running south to north on section line. Corner is shown marked by a hub set in center of road with CAR 20 east and west. Ties:

PP	NW	46.8'
FP	SW	54.9'

1949 County Surveyor's Record Book 1, page 431, same ties listed by H. G. Elletson.

1969 County Engineer's Notebook No. 288 contains a road survey for CSAH No. 25 running south to north on section line. Corner is shown marked by a nail set in center of road intersection. Ties:

PP	NW	48.65
TP	SE	48.1
FP	SW	71.6

1990 Paul Wellen, LS 10461, set a cast iron monument at the centerline of County Road 25 (running north and south) and County Road 43 (running east and west). He filed a Certificate of Location (#201460).

2008 The County Surveyor's Office searched and found Wellen's cast iron monument at the intersection of an east-west road (County Road No. 43) and a north-south road (County Road No. 25). Position gives distances to the N ¼ Cor. and E ¼ Cor. of 2615.13 feet and 2674.80 feet respectively. Surveyor accepts the CIM position and updated ties.

Coordinates to CIM Obtained by GPS
 NAD 83 (1996 Adjustment)
 N-148097.079
 E-505518.368

CERTIFICATE OF LOCATION OF GOVERNMENT CORNER

NORTHEAST Corner of Section 23, Township 37, Range 30, 4 P.M.

STATE OF MINNESOTA, County of BENTON

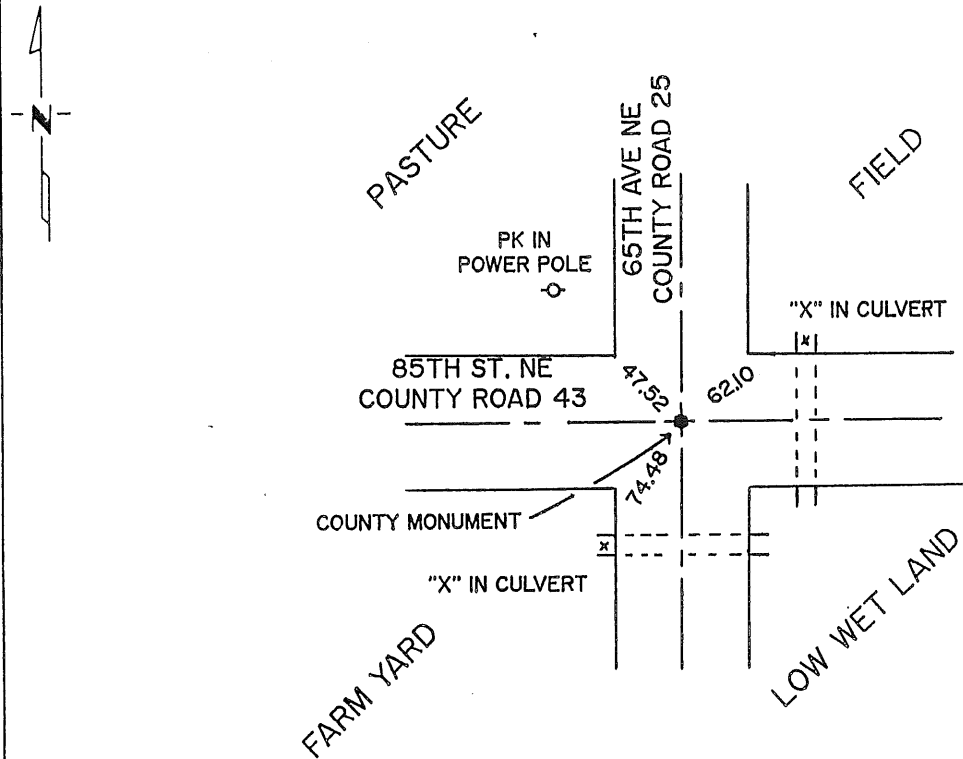
At the corner location shown on the sketch:

On _____ found a _____
DATE

left monument as found, lowered monument, removed monument (explain)

On 8/21/90 placed a COUNTY MONUMENT
DATE

SKETCH OF REFERENCE TIES



Statement of evidence relative to this corner location is on back of page.

I hereby certify that this document and the data contained herein was prepared by me or under my direct supervision.

Paul J. Miller 11/4/91
SIGNATURE DATE

Registration No. 10461

- Land Surveyor, Professional Engineer
- County Surveyor, County Engineer

OFFICE OF THE COUNTY RECORDER

County of _____

I hereby certify that this document was filed in the Co. Recorders office at _____ .M. on the _____ day of _____ A.D., 19 _____

County Recorder _____

By _____, Deputy

DOCUMENT NO. _____

Statement of Evidence:

Northeast corner, of Section 23, T
37 N, R 30 W, of the 4th Principal Meridian.

1. During the G.L.O. Survey of 1852, Mr. Edwin James Jr., a U.S. Deputy Surveyor, set a wood post to mark this corner.
2. A search of the Benton County Surveyor records provided no further information for the location of this corner.
3. On August 21, 1990, Paul E. Wellen & Associates, Inc., placed a cast iron monument in the center line intersection of 85th Street NE (County Road 43) and 65th Avenue NE (County Road 25). We also established new reference ties as indicated.

201460

OFFICE OF
BENTON COUNTY RECORDER
BENTON COUNTY, MN
CERTIFIED TO BE FILED
AND/OR RECORDED ON

FEB 25 8 15 AM '91

ALICE C. ENGELMEYER
COUNTY RECORDER

BY Jed DEPUTY