

CERTIFICATE OF LOCATION OF GOVERNMENT CORNER

NORTHEAST Corner of Section 26, Township 37, Range 30, 4TH P.M.

STATE OF MINNESOTA, County of BENTON

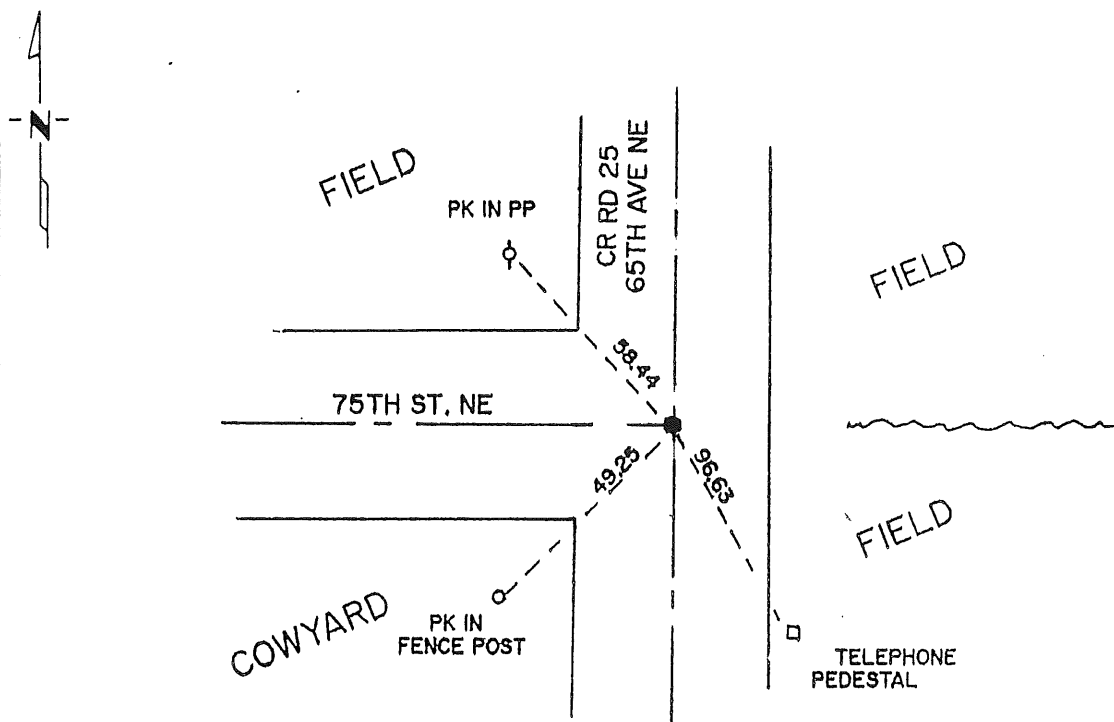
At the corner location shown on the sketch:

On 9/24/90 found a 1" SOLID PIN
DATE

left monument as found, lowered monument, removed monument (explain)

On 9/24/90 placed a COUNTY MONUMENT
DATE

SKETCH OF REFERENCE TIES



Statement of evidence relative to this corner location is on back of page.

I hereby certify that this document and the data contained herein was prepared by me or under my direct supervision.

Paul J. Miller 11/26/90
SIGNATURE DATE

Registration No. 10461

Land Surveyor, Professional Engineer

County Surveyor, County Engineer

OFFICE OF THE COUNTY RECORDER
County of _____

I hereby certify that this document was filed in the Co. Recorders office at _____ .M. on the _____ day of _____ A.D., 19 ____

County Recorder _____

By _____, Deputy

DOCUMENT NO. _____

Statement of Evidence:

Northeast corner of Section 26, T 37 N, R 32 W, of the 4th Principal Meridian.

1. During the G.L.O. Survey of 1852, Mr. Edwin James Jr, a U.S. Deputy Surveyor, set a wood post to mark this corner.
2. A search of the Benton County Surveyor records indicated a hub with 2 reference ties in the center line intersection of roads north, south and west.
3. On September 24, 1990, Paul E. Wellen & Associates, Inc., found a 1 inch solid iron pin at the above location. The reference ties were missing. We lowered said 1" solid iron pin and replaced it with a cast iron monument and established new reference ties as indicated.

200722

OFFICE OF
BENTON COUNTY RECORDER
BENTON COUNTY, MN
CERTIFIED TO BE FILED
AND/OR RECORDED ON

DEC 18 1 47 PM '90

ALICE S. ENGELMEYER
COUNTY RECORDER

BY *[Signature]* DEPUTY