

# CERTIFICATE OF LOCATION OF GOVERNMENT CORNER

NORTH EAST Corner of Section 27, Township 37, Range 30, 4TH P.M.

STATE OF MINNESOTA, County of BENTON

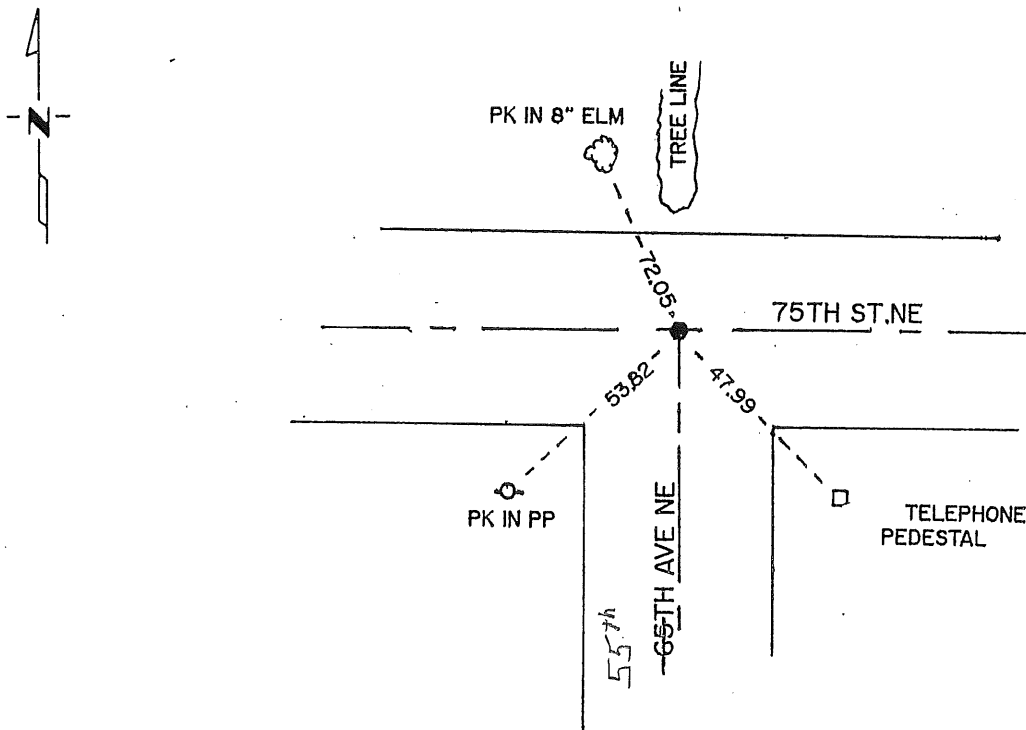
At the corner location shown on the sketch:

On 9/17/90 found a 3/4" IP  
DATE

left monument as found,  lowered monument,  removed monument (explain)

On 9/18/90 placed a COUNTY MONUMENT  
DATE

## SKETCH OF REFERENCE TIES



Statement of evidence relative to this corner location is on back of page.

I hereby certify that this document and the data contained herein was prepared by me or under my direct supervision.

[Signature] 11/14/91  
SIGNATURE DATE

Registration No. 10461

- Land Surveyor,  Professional Engineer
- County Surveyor,  County Engineer

### OFFICE OF THE COUNTY RECORDER

County of \_\_\_\_\_

I hereby certify that this document was filed in the Co. Recorders office at \_\_\_\_\_ .M. on the \_\_\_\_\_ day of \_\_\_\_\_ A.D., 19 \_\_\_\_\_

County Recorder \_\_\_\_\_

By \_\_\_\_\_, Deputy

DOCUMENT NO. \_\_\_\_\_

Statement of Evidence:

Northeast corner of Section 27, T  
37 N, R 30 W, of the 4th Principal Meridian.

1. During the G.L.O. Survey of 1852, Mr. Edwin James Jr., a U.S. Deputy Surveyor set a wood post to mark this corner.
2. A search of the Benton County Surveyor records provided no information for the location of this corner.
3. On September 17, 1990, Paul E. Wellen & Associates, Inc., found a 3/4 inch pipe in the intersection of the center lines of 65th Avenue NE (north-south) and 75th Street NE (east-west) and opposite a tree line north. We lowered said 3/4 inch pipe and placed a cast iron monument at this location. We also established reference ties as indicated.

201462

OFFICE OF  
BENTON COUNTY RECORDER  
BENTON COUNTY, MN  
CERTIFIED TO BE FILED  
AND/OR RECORDED ON

FEB 25 8 16 AM '91

ALICE G. ENGELMEYER  
COUNTY RECORDER

BY *[Signature]* DEPUTY