

Certified, Filed and or Recorded on
Mar. 23, 2010 AT 11:51AM

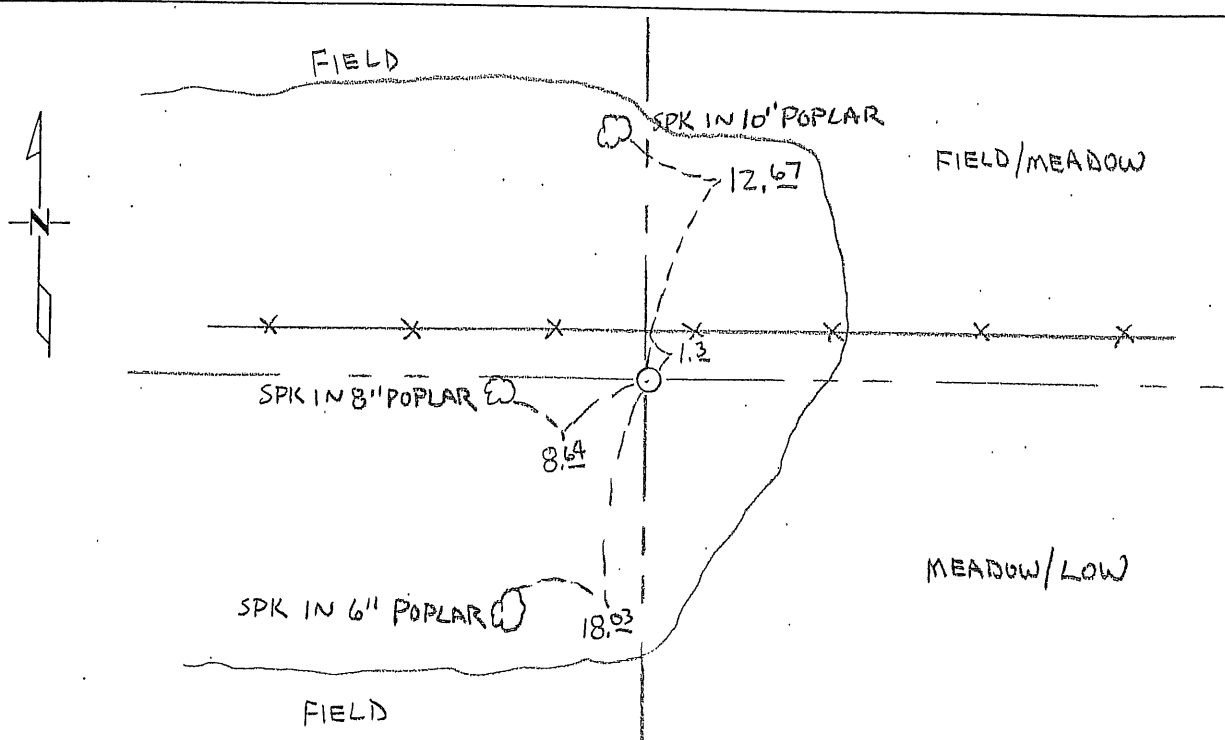
Signed: M
MARILYN J NOVAK G V I
BENTON COUNTY MINNESOTA
MARILYN J NOVAK
COUNTY RECORDER

CERTIFICATE OF LOCATION OF GOVERNMENT CORNER

North East Corner of Section 30, Township 37, Range 30
4TH Principal Meridian, State of Minnesota, County of Benton

At the corner location shown on the sketch:

- On _____ found a _____
DATE
- left monument as found lowered monument removed monument (explain)
- On 8-1-06 placed an 1/2" I.P. #1955Z
DATE



Statement of evidence for this corner location is on back of this page.

I hereby certify that this document was researched and prepared by me or under my direct supervision and that I am a licensed Land Surveyor under the laws of the State of Minnesota.

Signature Jerome C. Wittstock Date 3-22-2010 License No. 1955Z
Title: Land Surveyor Professional Engineer County Surveyor County Engineer

Benton County Surveyor's Office
 Jerome C. Wittstock, County Surveyor
 Minnesota License No. 19552

Statement of Evidence:

G302

Northeast Corner of Section 30, Township 37 North, Range 30 West, Mayhew Lake Township, 4th Principal Meridian, Benton County, Minnesota.

1852 Original US General Land Office survey set a wood post at this location and bearing trees were recorded.

10" Aspen	N 85 W	142 links
12" Aspen	S 56 1/2 W	112 links

2001 Westwood Professional Services, Inc. established a theoretical position for this corner on a straight line between the North ¼ corner of Section 30 and the NE corner of Section 28. Position falls 6 feet north of an east-west fence line.

Measurements from computed position:

2685.79 feet to E ¼ corner Sec. 30
 10,683.86 feet to NE corner Sec. 28
 2646.16 feet to N ¼ corner Sec. 30

County Coordinates computed from traverse information:

NAD 83 (1996 Adjustment)

N- 142815.10

E- 484119.61

NOTE: DO NOT USE - Corner area needs to be searched!

2002 No record evidence of this corner has been found in the Benton County records.

2006 The Benton County Surveyor's Office searched the area for additional corner evidence, but none was found. The theoretical position determined in 2001 was ignored since it does not follow any accepted method for the remonumentation of obliterated or lost corners. The east-west fence line was held for the north-south position and the east-west position was determined by proportionate measurement from the north quarter of Section 30 and the northeast corner of Section 28. A ½" iron pipe capped 19552 was set on the south side of the east-west fence at proportionate measurement east-west and reference ties were established

Coordinates Obtained by GPS

NAD 83 (1996 Adjustment)

N-142810.779

E-484119.493