

Certified, Filed and or Recorded on
Nov. 06, 2008 AT 08:36AM

Signed: CK
MARILYN J NOVAK G V I
BENTON COUNTY MINNESOTA
MARILYN J NOVAK
COUNTY RECORDER

CERTIFICATE OF LOCATION OF GOVERNMENT CORNER

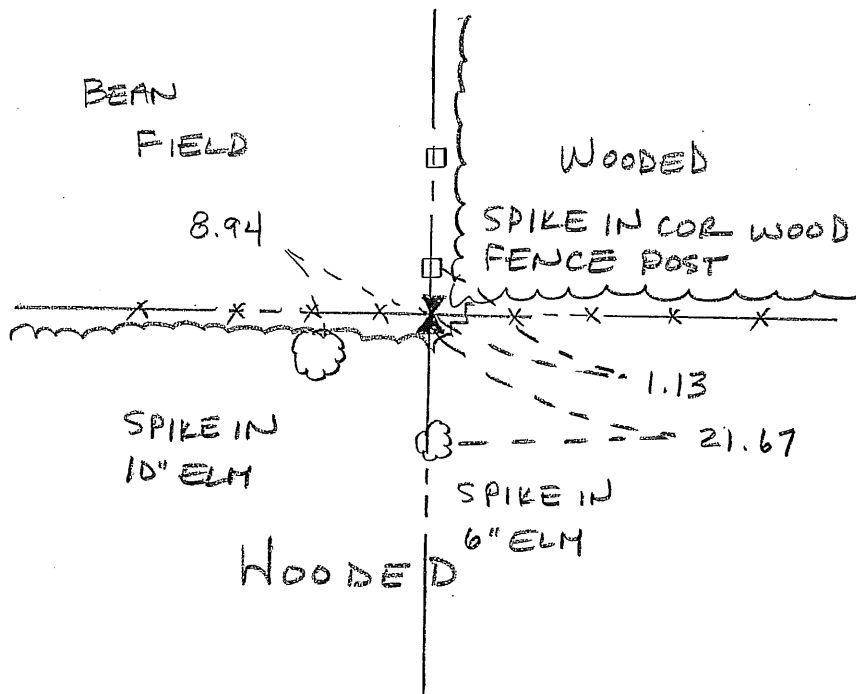
NORTH QUARTER Corner of Section 18, Township 37N, Range 28W
4TH Principal Meridian, State of Minnesota, County of Benton

At the corner location shown on the sketch:

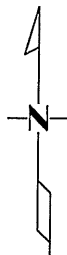
On 22 OCT 2008 found a CAST IRON MONUMENT

left monument as found lowered monument removed monument (explain)

On _____ placed an _____



7
18



Statement of evidence for this corner location is on back of this page.

I hereby certify that this document was researched and prepared by me or under my direct supervision and that I am a licensed Land Surveyor under the laws of the State of Minnesota.

Signature Jan W. Oley
Deputy Benton County Surveyor
License No. 45872

Date: 11/04/2008

Statement of Evidence:**I181**

North Quarter Corner of Section 18, Township 37 North, Range 28 West, Maywood Township, 4th Principal Meridian, Benton County, Minnesota.

1855 US General Land Office survey established this corner and set a wood post and bearing trees were recorded as follows:

12" Elm	S 35 E	39 links
9" W Ash	N 63 W	50 links

1915 County Surveyor's Record Book 2, pages 420 and 421, and Record Book A, Map No. 15, contain a survey by J. P. Soderstrum of Section 18. Notes state he set a stake at intersection of fences based on testimony and made tie: 14" Elm S 52 1/4 W 179 links. Survey gives distance of 34.71 chains west to Northwest corner of Section 18.

1979 William Lunser, LS 9394, set a 1/2 " iron pipe at intersection of fences east, west, and north.

1988 William Lunser replaced iron pipe with a cast iron monument and filed a Certificate of Location (191266). Distance of 2653.57 feet is given to the NE corner of Section 18.

2008 The County Surveyor's Office searched and found a cast iron monument at the intersection of an east-west fence line and a north fence line. Distance to NW corner and NE corner measures 2290.16 feet and 2653.71 feet respectively, which agrees well with Soderstrum's 1915 distance to the NW corner of 2290.86 feet (34.71 ch.) and Lunser's 1988 distance to the NE corner of 2653.57 feet. Surveyor accepts the cast iron monument as the best evidence and updated ties.

County Coordinates to CIM by GPS
 NAD 83 (1996 Adjustment)
 N-153842.080
 E-544711.324

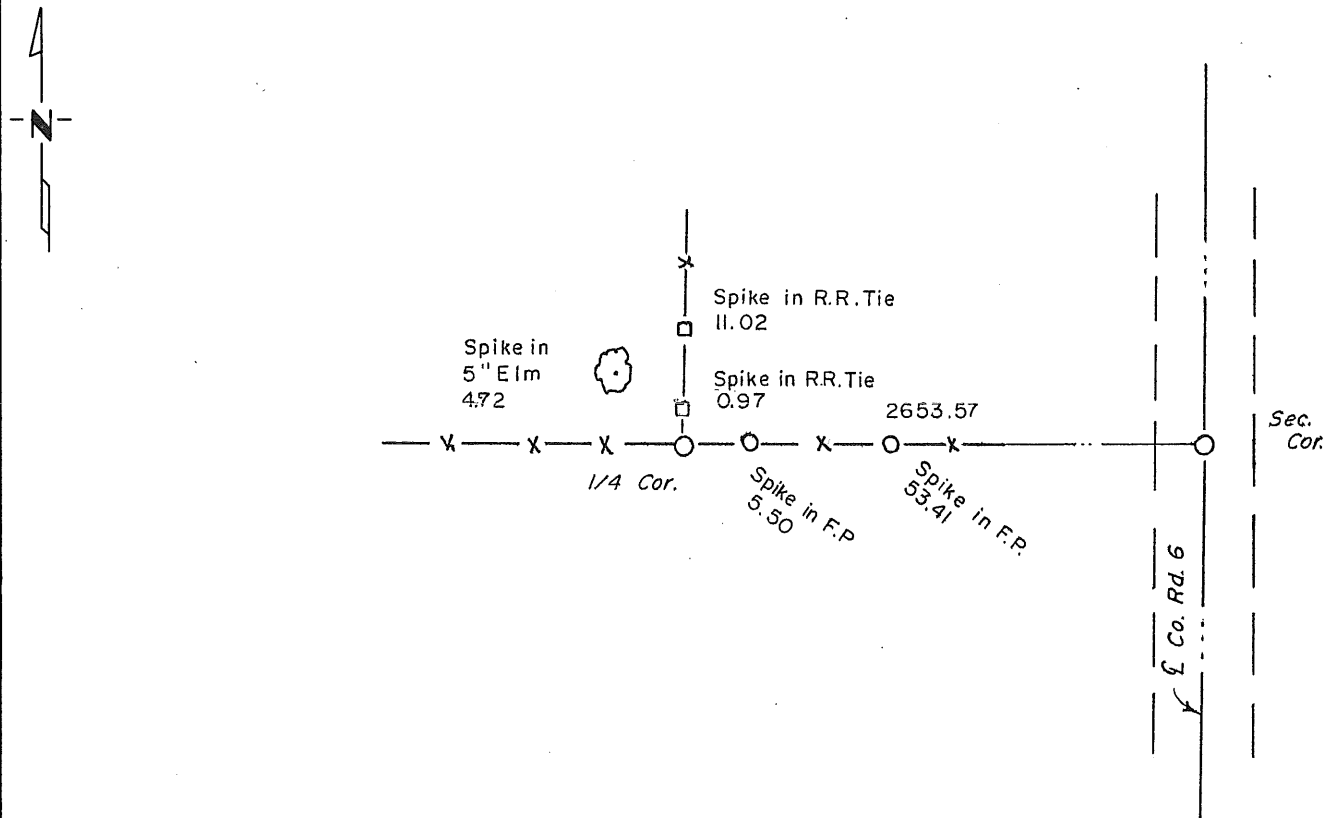
CERTIFICATE OF LOCATION OF GOVERNMENT CORNER

North Quarter Corner of Section 18, Township 37, Range 28, 4th P.M.
STATE OF MINNESOTA, County of Benton

At the corner location shown on the sketch:

- On _____ found a _____
DATE
- left monument as found, lowered monument, removed monument (explain)
- On 12-8-88 placed a Benton County Cast Iron Monument
DATE

SKETCH OF REFERENCE TIES



Statement of evidence relative to this corner location is on back of page.

I hereby certify that this document and the data contained herein was prepared by me or under my direct supervision.

William J. Luman 12/15/88
SIGNATURE DATE

Registration No. 9394

- Land Surveyor, Professional Engineer
- County Surveyor, County Engineer

OFFICE OF THE REGISTER OF DEEDS

County of _____

I hereby certify that this document was filed in the Reg. of Deeds office at _____ .M. on the _____ day of _____ A.D., 19 _____

Register of Deeds _____

By _____, Deputy

DOCUMENT NO. _____

Statement of Evidence:

9-19-79 Set 1/2" iron pipe at the intersection of fence lines east-west and north. This location was supported by measurements to the east and west.

12-8-88 Found 1/2" iron pipe as set in 1979. Placed Cast Iron Monument at this location. Verified old ties and set new ones.

191266

OFFICE OF
BENTON COUNTY RECORDER
BENTON COUNTY, MN
CERTIFIED TO BE FILED
AND/OR RECORDED ON

JAN 12 12 09 PM '89

ALICE G. ENGELMEYER
COUNTY RECORDER

BY *gpe* DEPUTY