

Certified, Filed and or Recorded on
Nov. 06, 2008 AT 08:54AM

Signed: CK
MARILYN J NOVAK G V I
BENTON COUNTY MINNESOTA
MARILYN J NOVAK
COUNTY RECORDER

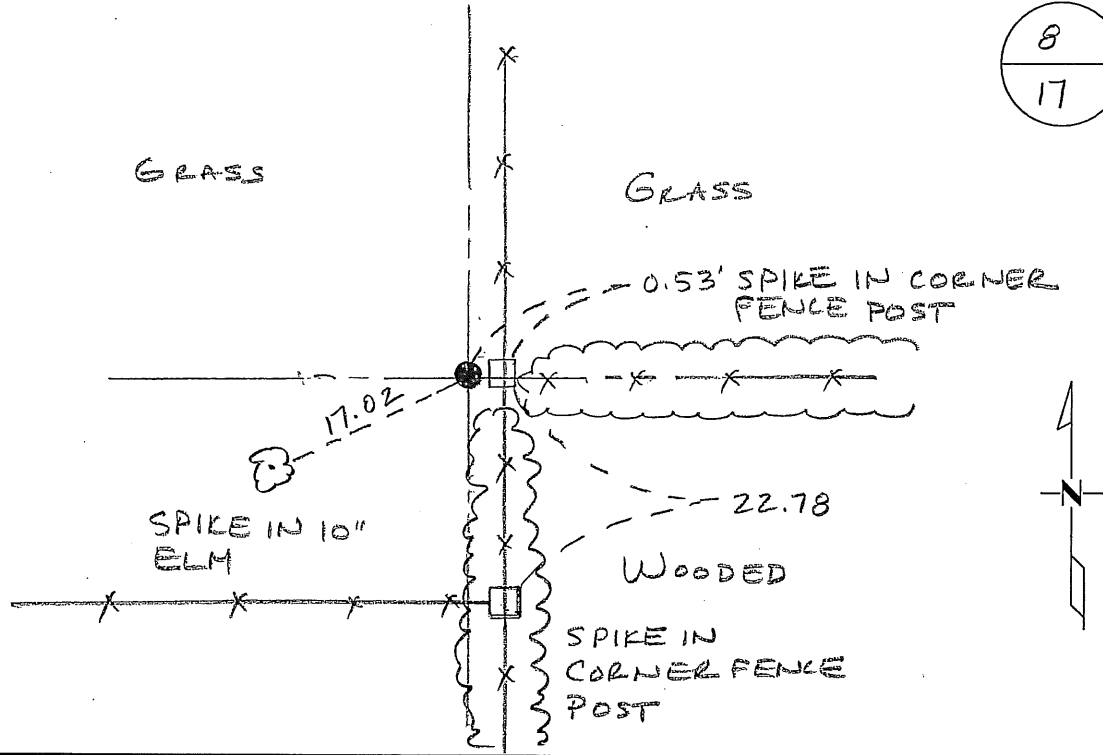
CERTIFICATE OF LOCATION OF GOVERNMENT CORNER

NORTH QUARTER Corner of Section 17, Township 37N, Range 28W
4TH Principal Meridian, State of Minnesota, County of Benton

At the corner location shown on the sketch:

- On 22 OCT 2008 found a 1/2" OPEN IRON PIPE
- left monument as found lowered monument removed monument (explain)
- On _____ placed an _____

8
17



Statement of evidence for this corner location is on back of this page.

I hereby certify that this document was researched and prepared by me or under my direct supervision and that I am a licensed Land Surveyor under the laws of the State of Minnesota.

Signature Jan W. Oly
Deputy Benton County Surveyor
License No. 45872

Date: 11/03/2008

Benton County Surveyor's Office
Jason W. Oberg, Deputy County Surveyor
Minnesota License No. 45872

Statement of Evidence:

I171

North Quarter Corner of Section 17, Township 37 North, Range 28 West, Maywood Township, 4th Principal Meridian, Benton County, Minnesota.

1855 Original US General Land Office survey set a wood post at this location and bearing trees were recorded:

12" Sugar	N 72 ½ W	17 links
13" Maple	S 5 E	29 links

2002 No resurvey information was found on this corner in the Benton County records.

2008 The County Surveyor's Office searched and found a ½" open iron pipe above ground near the intersection of an old north-south-east fence. Distances to the NW and NE Cors yields 2578.26 ft. and 2616.74 ft., respectively. Corners falls 19.42 ft. west and 10.18 ft south of a lost position. Position is accepted as the best evidence. Tie were made

County Coordinates to ½" open iron pipe obtained by GPS
NAD 83 (1996 Adjustment)
N-153750.648
E-549942.387