

Certified, Filed and or Recorded on  
Nov. 06, 2008 AT 08:48AM

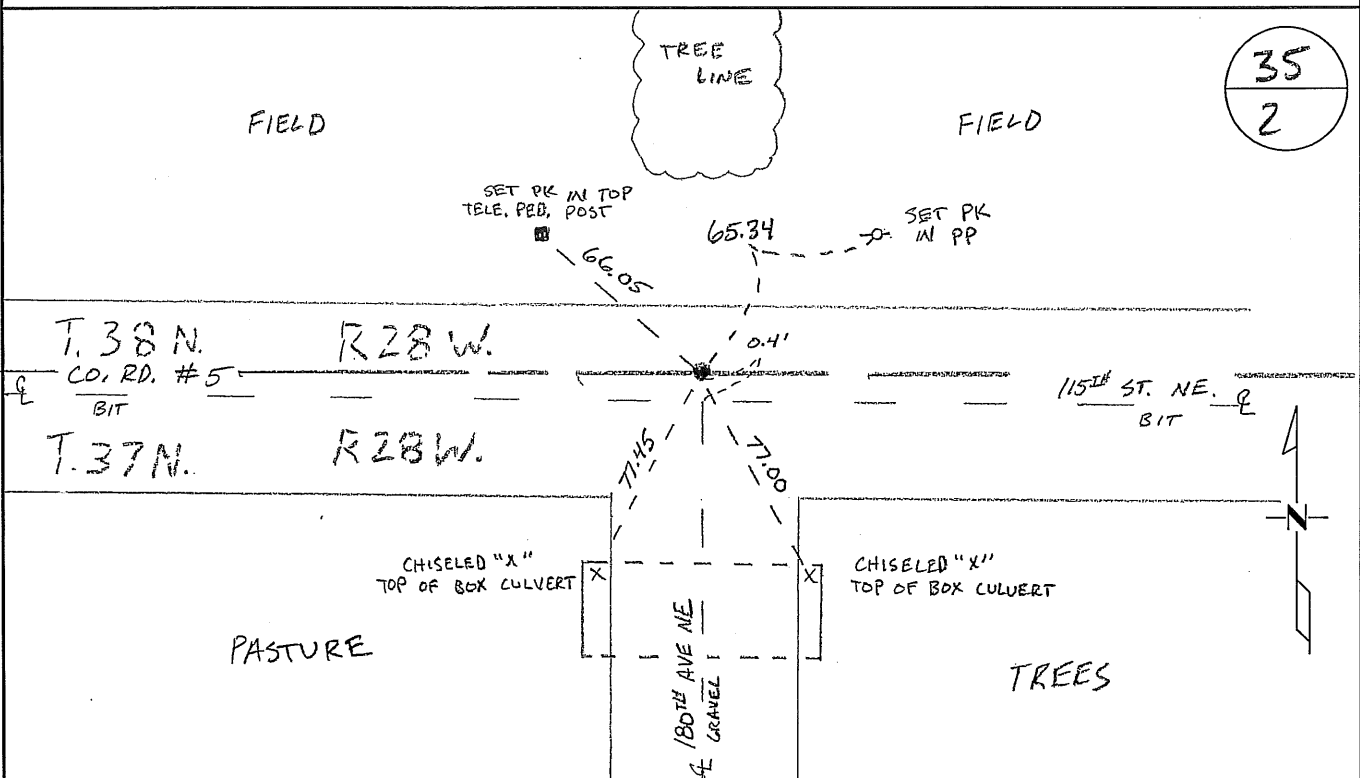
Signed: CK  
MARILYN J NOVAK G V  
BENTON COUNTY MINNESOTA  
MARILYN J NOVAK  
COUNTY RECORDER

# CERTIFICATE OF LOCATION OF GOVERNMENT CORNER

NORTH QUARTER Corner of Section 2, Township 37N, Range 2BW  
4TH Principal Meridian, State of Minnesota, County of Benton

At the corner location shown on the sketch:

- On 10/16/08 found a CAST IRON MONUMENT BELOW BITUMINOUS.
- left monument as found       lowered monument       removed monument (explain)
- On 10/16/08 placed an PK NAIL WITH BENTON COUNTY SURVEYOR DISK FLUSH WITH BITUMINOUS.



Statement of evidence for this corner location is on back of this page.

I hereby certify that this document was researched and prepared by me or under my direct supervision and that I am a licensed Land Surveyor under the laws of the State of Minnesota.

Signature *Joan W. Oly*  
Deputy Benton County Surveyor  
License No. 45872

Date: 11/03/2008

Benton County Surveyor's Office  
 Jason W. Oberg, Deputy County Surveyor  
 Minnesota License No. 45872

Statement of Evidence:

I021

North Quarter Corner of Section 2, Township 37 North, Range 28 West, Maywood Township, 4<sup>th</sup> Principal Meridian, Benton County, Minnesota.

1849 Original US General Land Office survey set a wood post at this location and bearing trees were recorded:

8" Pine	S 22 W 394 links
18" Pine	N 30 W 457 links

1899 Road Survey Report by John E. Whilt, County Surveyor, shows survey running west to east on town line with a distance of 79.20 chains for the north line of Sec. 2, with no mention of the ¼ corner.

Undated County Surveyor's Record Book 2, page 388, shows the following reference tie:

10" W. Pine	S 33 1/4 E	229 links
-------------	------------	-----------

Gives distance of 39.60 chains (2613.6 feet) to the NW and NE section corners.

1921 County Engineers' Notebook No. 39 shows survey of road on town line with tie to corner:

W. Pine	S 33-15 E	151.1'
---------	-----------	--------

Stationing gives distance of 2608.0 feet to the NW corner of section 2.

1955 County Engineer's Notebook No. 202 shows a survey of SAR 5 running west to east on town line. Corner is shown marked by a spike set in center of road as a POT with fence north and town road south. Stationing gives distance of 2611.3 to the NW corner and 2611.3 feet to the NE corner. Ties:

Inside edge bridge WH Guard	SW	76.6
Inside edge bridge WH Guard	SE	76.3
F.P.	SE	61.9

2001 Westwood Professional Services, Inc. found a cast iron monument at the intersection of the centerlines of County Road 5 (running east and west) and 180<sup>th</sup> Avenue NE (running from the south) and established reference ties.

2002 Searched for evidence of original pine bearing trees and County Surveyor pine tie. No evidence found. Unclear what ties were to for "inside edge of bridge". Origin of CIM is not known (probably Highway Department), but appears to be acceptable as a corner that was set lost, agreeing with older record and also fits road occupation. Measured 2611.07 feet to the NW corner and 2611.19 feet to the NE corner. Filed a Certificate of Location (#291191).

County Coordinates Obtained by GPS (Cast Iron Monument)

NAD 83 (1996 Adjustment)

N-164365.125

E-565627.942

2008 The County Surveyor's Office searched and found a cast iron monument under the east-west bituminous road, as located by Westwood Professional Services, Inc. in 2002. The Surveyor set a PK Nail with Benton County Disk flush with bituminous and updated ties. Coordinates obtained by GPS agree with those reported by Westwood Professional Services, Inc. in 2002.

Office of the County Recorder, BENTON County, Minnesota  
I hereby certify that the within instrument was filed for record in this office on the  
\_\_\_\_\_ day of \_\_\_\_\_, 200\_\_\_\_.

COUNTY RECORDER \_\_\_\_\_

By \_\_\_\_\_ Deputy.

### CERTIFICATE OF LOCATION OF GOVERNMENT CORNER

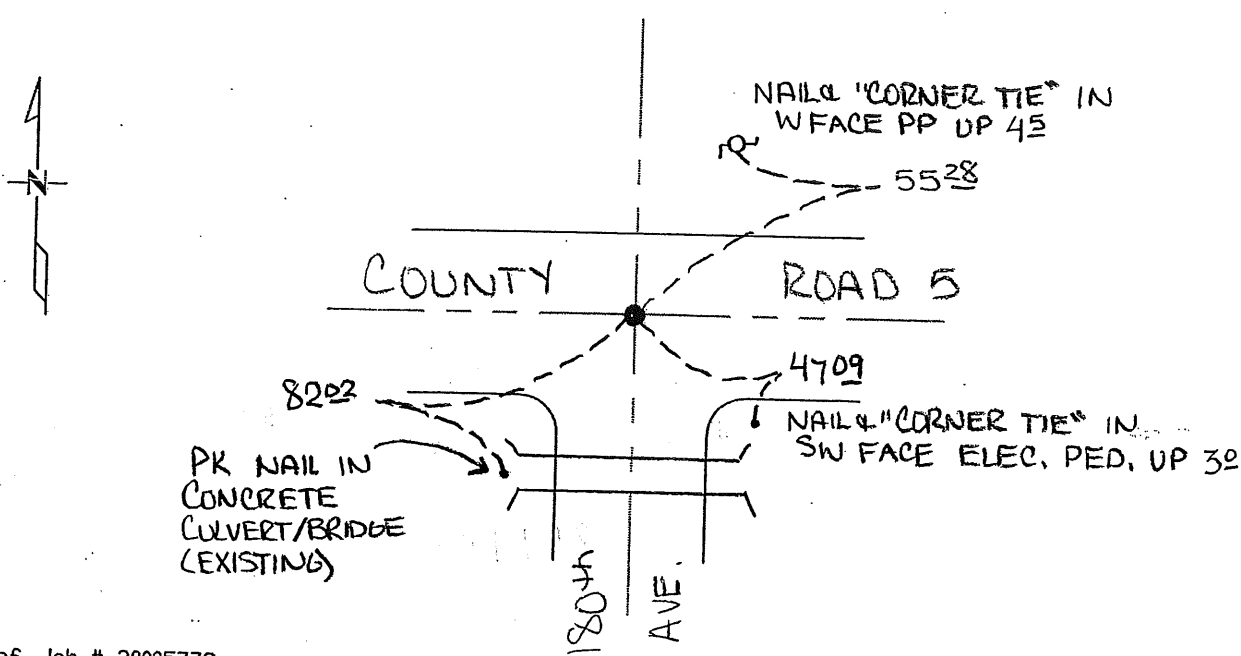
North Quarter \_\_\_\_\_ Corner of Section 2, Township 37, Range 28  
4TH Principal Meridian, State of Minnesota, County of BENTON

At the corner location shown on the sketch:

On 10/15/01 found a Cast Iron Monument  
DATE

left monument as found     lowered monument     removed monument (explain)

On \_\_\_\_\_ placed a \_\_\_\_\_  
DATE



Ref. Job # 20005778

Ties that are found and in good condition are noted as 'existing'.  
New ties are to the head of a nail with a disk marked 'Corner Tie'.

Statement of evidence for this corner location is on back of this page.

I hereby certify that this document was researched and prepared by me or under my direct supervision and that I am a licensed Land Surveyor under the laws of the State of Minnesota.

Signature [Handwritten Signature]

Date 10/14/02

License No. 12684

Title:  Land Surveyor     Professional Engineer     County Surveyor     County Engineer

**Statement of Evidence:**

The North Quarter Corner of Section 2, Township 37 North, Range 28 West, Maywood Township, 4<sup>th</sup> Principal Meridian, Benton County, Minnesota.

In 1849, Theodore Conkey set a wood post at this location and bearing trees were recorded.

8" Pine	S 22 W	394 links
18" Pine	N 30 W	457 links

The County Surveyors records in Book 2, page 388, show the following reference tie.

10" W. Pine	S 33 1/4 E	229 links
-------------	------------	-----------

Undated and unspecific notes refer to the following reference ties.

Inside edge bridge WH Guard	SW	76.6
Inside edge bridge WH Guard	SE	76.3
F.P.	SE	61.9

On October 15, 2001 Westwood Professional Services, Inc. found a cast iron monument at the intersection of the centerlines of County Road 5 (running east and west) and 180<sup>th</sup> Avenue NE (running from the south) and established reference ties.

10/10/02 Searched for evidence of original pine bearing trees and County Surveyor pine tie. No evidence found. Unclear what ties were to for "inside edge of bridge". Origin of CIM is not known, but appears to be acceptable as an obliterated corner.

MARILYN J. NOVAK  
COUNTY RECORDER  
BY Marilyn J. Novak DEPUTY

291191

OFFICE OF  
BENTON COUNTY RECORDER  
BENTON COUNTY, MN  
CERTIFIED TO BE FILED  
AND/OR RECORDED ON

2002 OCT 30 P 3: 24