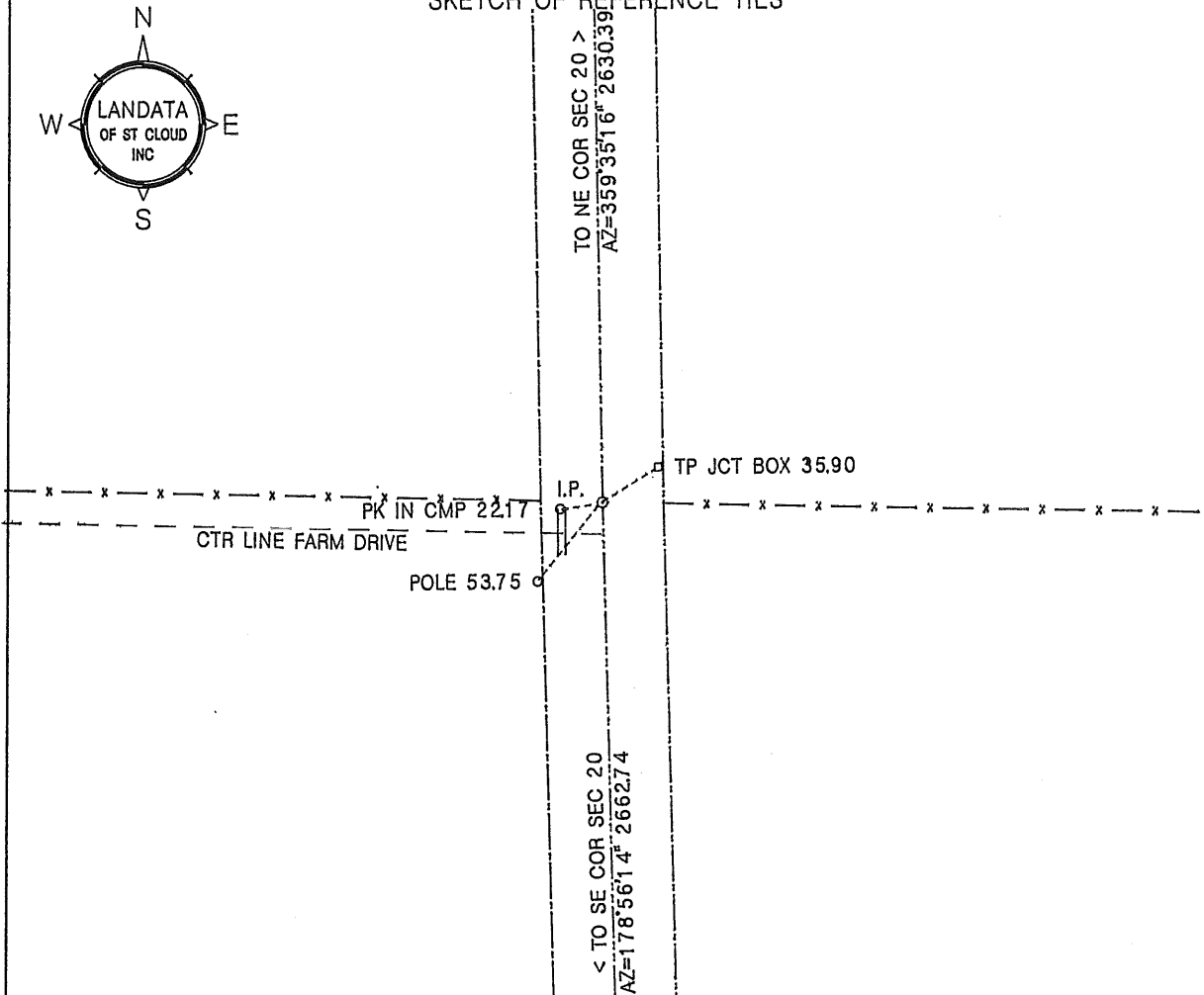


# CERTIFICATE OF LOCATION OF GOVERNMENT CORNER

EAST QUARTER corner of Section 20, Township 37, Range 28, 4th P.M.  
Benton County, Minnesota.

On Aug 14, 2001, a one half inch iron pipe (I.P.) was placed at this location.

## SKETCH OF REFERENCE TIES



Statement of evidence relative to this corner location on back of page

I hereby certify that this document and the data contained herein was prepared by me or under my direct supervision.

*William F. Lunser* 1-24-02

William F. Lunser, L.S. Date  
Mn Reg No 9394

OFFICE OF THE COUNTY RECORDER  
Benton County, Minnesota

I hereby certify that this document was filed in this office at \_\_\_:\_\_\_ M. on the \_\_\_ day of \_\_\_\_\_, 20\_\_.

County Recorder \_\_\_\_\_

By \_\_\_\_\_, Deputy

DOCUMENT NO. \_\_\_\_\_

STATEMENT OF EVIDENCE:

No records were found to indicate use or remonumentation of this corner after its original placement by the U.S. Government Survey.

A search of the area revealed a masonry nail at the intersection of fence lines east and west with the centerline of a north-south township road. By lost methods, the point midway between opposing section corners would place this quarter corner 16 feet south of the nail and in close proximity to the center line of a farm entrance serving land to the southwest. The driveway parallels the westerly fence for several hundred feet before turning to the southwest.

Since the western fence continues westerly in a straight line and corresponds with the fence to the east, the driveway is presumed to have been built entirely on the land it serves while the fence lines stand as accessories to an obliterated government corner.

The nail was therefore removed and replaced with a one half inch iron pipe.



William F. Lunser, L.S.

283117

OFFICE OF  
BENTON COUNTY RECORDER  
BENTON COUNTY, MN  
CERTIFIED TO BE FILED  
AND/OR RECORDED ON

FEB 21 4 16 PM '02

MARILYN J. NOVAK  
COUNTY RECORDER

BY *Marilyn J. Novak*  
DEPUTY