

MARILYN J. NOVAK
COUNTY RECORDER
BY Marilyn J. Novak DEPUTY

OFFICE OF
BENTON COUNTY RECORDER
BENTON COUNTY, MN
CERTIFIED TO BE FILED
AND/OR RECORDED ON

298888

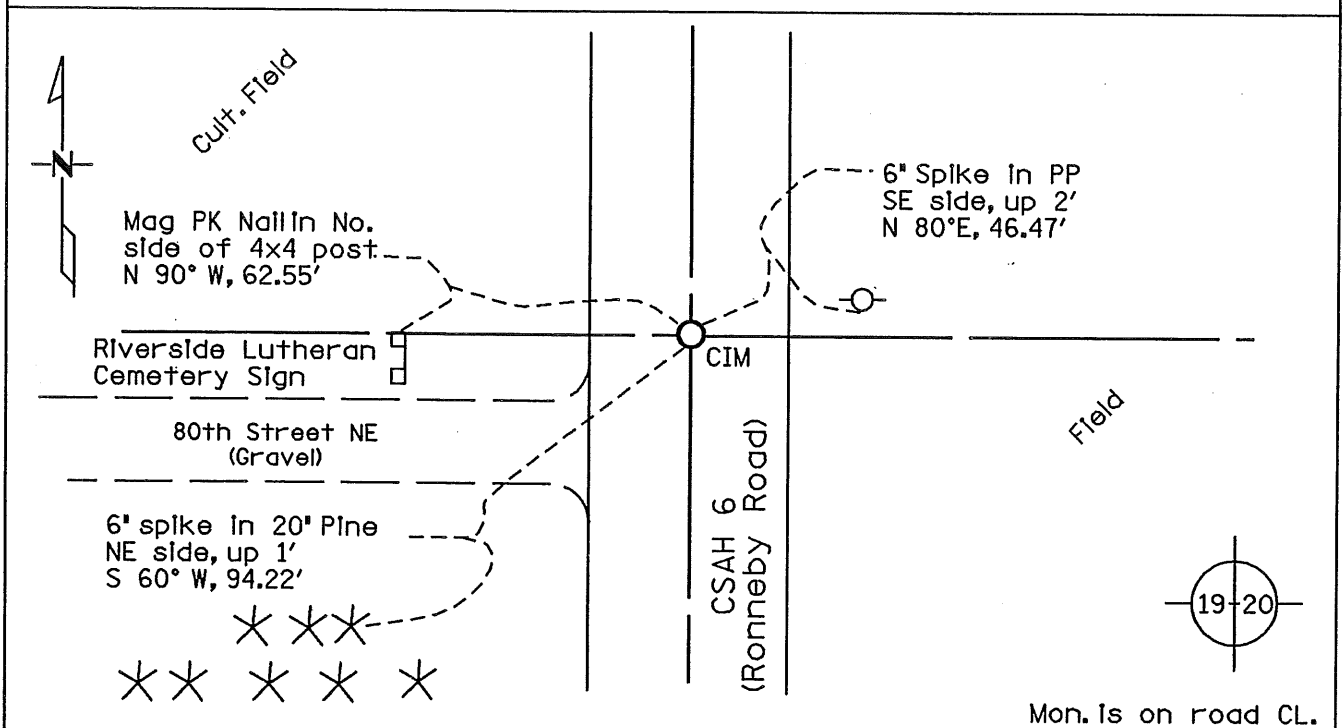
2003 MAY -5 P 1:54

CERTIFICATE OF LOCATION OF GOVERNMENT CORNER

EAST QUARTER Corner of Section 19, Township 37 N, Range 28 W
4th Principal Meridian, State of Minnesota, County of BENTON

At the corner location shown on the sketch:

- On 5/31/2002 found a 3/4 Inch Iron pipe flush and a 1/2 Inch Iron pipe
DATE down 8 Inches.
- left monument as found lowered monument removed monument (explain)
- On 5/31/2002 placed a Benton County Cast Iron Monument, down 0.2 feet,
DATE Inplace of found Iron pipes.



Statement of evidence for this corner location is on back of this page.

I hereby certify that this document was researched and prepared by me or under my direct supervision.

Signature Samuel J. Deleo Date 3-31-2003 License No. 40341
Title: Land Surveyor Professional Engineer County Surveyor County Engineer

Statement of Evidence

East Quarter Corner of Section 19, Twp. 37 N, Rng. 28 W
4th P.M., Benton County, Minnesota

In 1855 the U.S GLO, Mr. Oscar Davis, U.S. Deputy Surveyor, performed the original government land survey and marked the corner with a post.

A Certificate of Location from construction ties, made for S.A.P. 05-606-10, on file at the Benton County Highway Department references a found pipe in the centerline of C.S.A.H. 6. It notes that the monument may have been placed by RCM, an Engineering and Land Surveying firm in St. Cloud. In a review of available information at RCM (now SEH, Inc.) old road construction plans for this area were found, but no information was found related to the location of this corner.

On August 14, 2001 William Lunser, R.L.S. found a ½ inch diameter iron pipe at this location. Ties were made and a Certificate of Location of Government Corner was filed, Document number 283118. In his Statement of Evidence he states that records from the Benton County highway Department indicated an iron monument of unknown origin at this location and that the found iron monument is in the proximity of the location shown on Mn/DOT's maps.

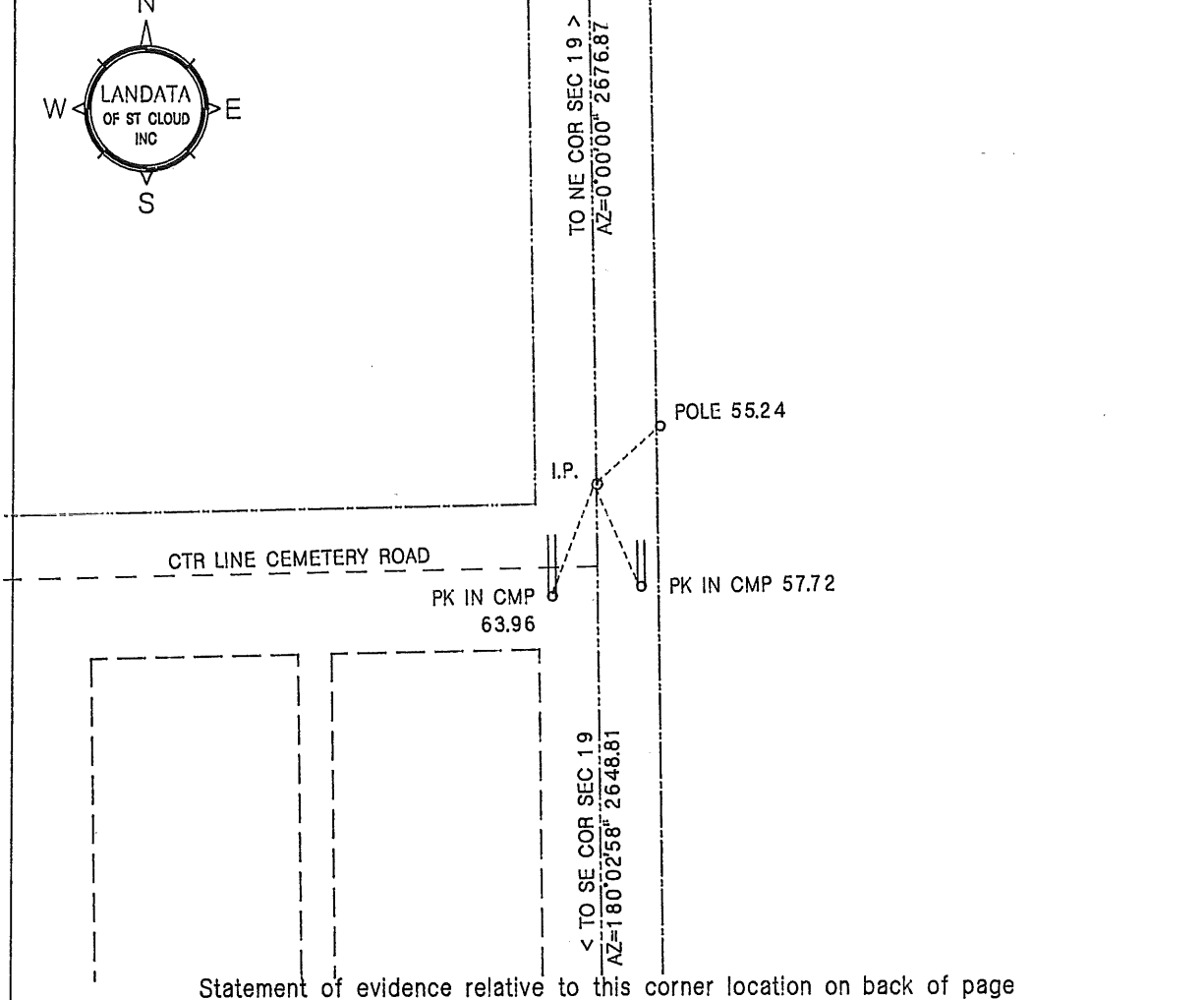
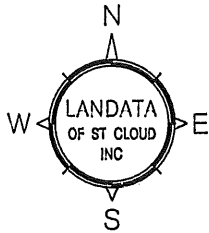
On May 31, 2002 Sam DeLeo, R.L.S. found a ¾-inch diameter iron pipe, flush, and a ½-inch diameter pipe, down 8 inches, in the centerline of C.S.A.H 6 as shown on Benton County's Certificate of Location. The location of the found monuments is consistent with the construction plans for S.A.P. 05-606-10 by RCM. Notes as a "I.P. at P.I. Station 388+20.75". The location of the found iron monuments fits reasonably well with information derived from various existing monuments found in the plat of ST. FRANCIS during Mr. DeLeo's 2002 survey of the City Ronneby Corporate Limits. Both monuments were removed and a Benton County cast iron monument was set in place of the 1-inch diameter iron pipe. Reference ties were recorded and a Certificate of Location of Government Corner was made.

CERTIFICATE OF LOCATION OF GOVERNMENT CORNER

EAST QUARTER corner of Section 19, Township 37, Range 28, 4th P.M.
Benton County, Minnesota.

On Aug 14, 2001, a one half inch iron pipe (I.P.) was found at this location.

SKETCH OF REFERENCE TIES



Statement of evidence relative to this corner location on back of page

I hereby certify that this document and the data contained herein was prepared by me or under my direct supervision.

William F. Lunser 1-24-02

William F. Lunser, L.S. Date
Mn Reg No 9394

OFFICE OF THE COUNTY RECORDER
Benton County, Minnesota

I hereby certify that this document was filed in this office at ___; ___ M. on the ___ day of _____, 20__.

County Recorder _____


By _____, Deputy

DOCUMENT NO. _____

STATEMENT OF EVIDENCE:

Benton County highway records indicate an iron monument of unknown origin at this location. A composite map of Ronneby, prepared by MnDOT (circa 1930's), indicates a distance of 2645 feet between this corner and the section corner to the south.

A one half inch iron pipe was found in close proximity to the MnDOT map's position and accepted as the perpetuated location of the original monument.



William F. Lunser, L.S.

283118

OFFICE OF
BENTON COUNTY RECORDER
BENTON COUNTY, MN
CERTIFIED TO BE FILED
AND/OR RECORDED ON

FEB 21 4 16 PM '02

MARILYN J. NOVAK
COUNTY RECORDER

BY  DEPUTY