

CERTIFICATE OF LOCATION OF GOVERNMENT CORNER

NORTHEAST Corner of Section 35, Township 37, Range 28, _____ P.M.

STATE OF MINNESOTA, County of BENTON

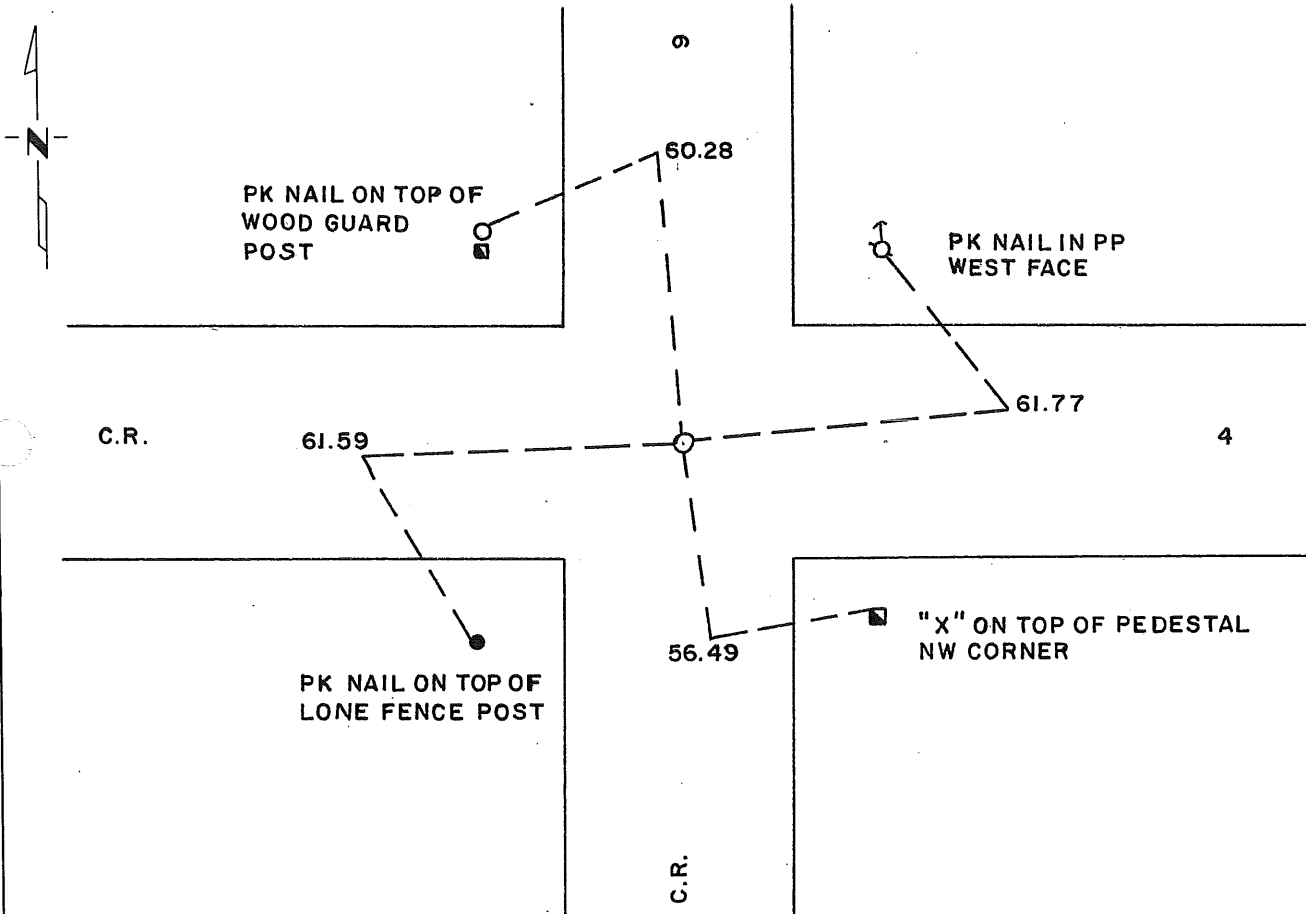
At the corner location shown on the sketch:

On 8-17-93 found a 1/2" OPEN IRON
DATE

left monument as found, lowered monument, removed monument (explain)

On 10-1-93 placed a STANDARD CAST IRON MONUMENT
DATE

SKETCH OF REFERENCE TIES



Statement of evidence relative to this corner location is on back of page.

I hereby certify that this document and the data contained herein was prepared by me or under my direct supervision.

Sidney P. Williamson 1/5/95
SIGNATURE DATE

Registration No. 10913

Land Surveyor, Professional Engineer

County Surveyor, County Engineer

OFFICE OF THE COUNTY RECORDER

County of _____

I hereby certify that this document was filed in the Co. Recorders office at _____ .M. on the _____ day of _____ A.D., 19 _____

County Recorder _____

By _____, Deputy

DOCUMENT NO. _____

Statement of Evidence:

1. In 1855, the original government survey was performed.
2. On November 16, 1983, David P. Regan, L.S. Number 12236 found a 1/2 inch iron pipe at the intersection of the centerlines of C.S.A.H. Number 4 and C.S.A.H Number 9.
3. On October 1, 1993, Williamson-Kotsmith, Inc. placed a Standard Cast Iron Monument at the same location.

227417

OFFICE OF
BENTON COUNTY RECORDER
BENTON COUNTY, AR
CERTIFIED TO BE FILED
AND/OR RECORDED ON

MAR 3 8 41 AM '95

ALICE G. FLYNN DEWEY
COUNTY CLERK

BY DM DEPUTY

CERTIFICATE OF LOCATION OF GOVERNMENT CORNER

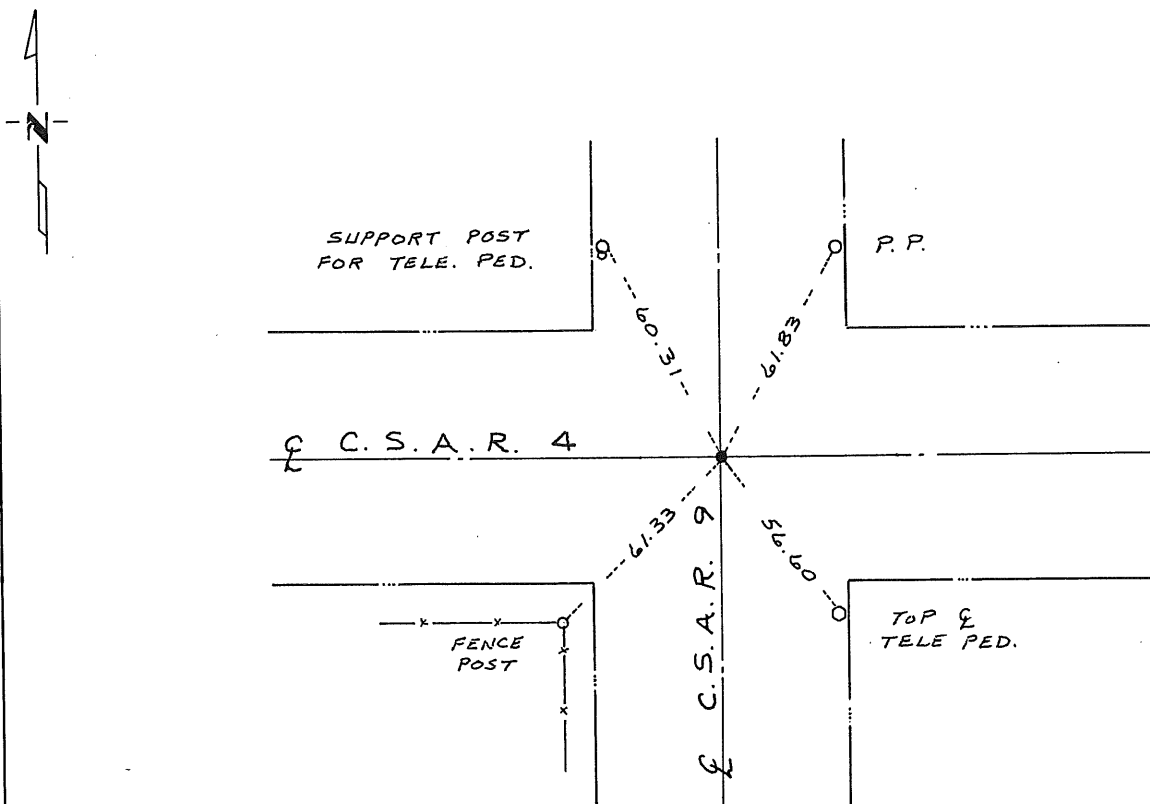
Northeast Corner of Section 35, Township 37, Range 28, 4th P.M.

STATE OF MINNESOTA, County of Benton

At the corner location shown on the sketch:

- On 11/16/83 found a 1 inch iron pipe in center line of County Road north-south, east-west
DATE
 left monument as found, lowered monument, removed monument (explain)
- On _____ placed a _____
DATE

SKETCH OF REFERENCE TIES



Statement of evidence relative to this corner location is on back of page.

I hereby certify that this document and the data contained herein was prepared by me or under my direct supervision.

David P. Regan 1/3/84
SIGNATURE DATE

Registration No. 12236

- Land Surveyor, Professional Engineer
- County Surveyor, County Engineer

OFFICE OF THE ~~REGISTER OF DEEDS~~ County Recorder
County of Benton

I hereby certify that this document was filed in the Reg. of Deeds office at 4 P.M. on the 11th day of January A.D., 1984
County Recorder T.G. Johnson
Register of Deeds

By _____, Deputy
DOCUMENT NO. 167979