

# CERTIFICATE OF LOCATION OF GOVERNMENT CORNER

NORTHEAST Corner of Section 34, Township 37, Range 28, \_\_\_\_\_ P.M.

STATE OF MINNESOTA, County of BENTON

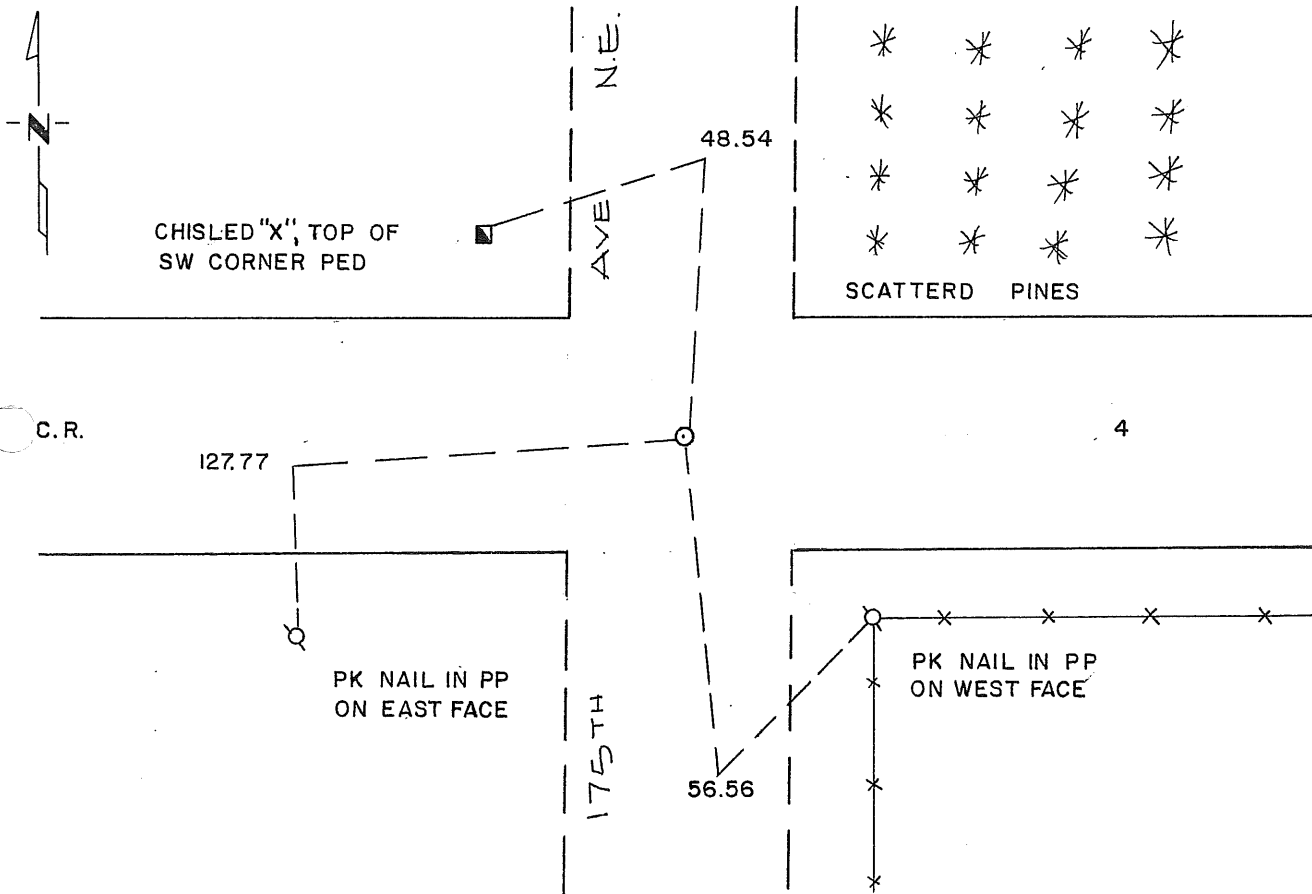
At the corner location shown on the sketch:

■ On 8-17-93 found a 1-1/4" SOLID IRON  
DATE

left monument as found,  lowered monument,  removed monument (explain)

■ On 10-1-93 placed a STANDARD CAST IRON MONUMENT  
DATE

### SKETCH OF REFERENCE TIES



Statement of evidence relative to this corner location is on back of page.

I hereby certify that this document and the data contained herein was prepared by me or under my direct supervision.

Sidney P. Williamson 1/5/95  
SIGNATURE DATE

Registration No. 10918

Land Surveyor,  Professional Engineer  
 County Surveyor,  County Engineer

OFFICE OF THE COUNTY RECORDER  
County of \_\_\_\_\_

I hereby certify that this document was filed in the Co. Recorders office at \_\_\_\_\_ .M. on the \_\_\_\_\_ day of \_\_\_\_\_ A.D., 19 \_\_\_\_\_

County Recorder \_\_\_\_\_

By \_\_\_\_\_, Deputy

DOCUMENT NO. \_\_\_\_\_

Statement of Evidence:

1. In 1855, the original government survey was performed.
2. On November 16, 1983, David P. Regan, L.S. Number 12236 found a 1 1/4 inch solid iron rod at the intersection of C.S.A.H Number 4 and a Township Road and established and recorded ties at this location.
3. On October 1, 1993, Williamson-Kotsmith, Inc. placed a Standard Cast Iron Monument at the same location.

227421

OFFICE OF  
BENTON COUNTY RECORDER  
BENTON COUNTY, MI  
CERTIFIED TO BE FILED  
AND/OR RECORDED ON

MAR 3 8 44 AM '95

ALICE S. MEYER  
COUNTY RECORDER

BY mm DEPUTY xm

# CERTIFICATE OF LOCATION OF GOVERNMENT CORNER

Northeast Corner of Section 34, Township 37, Range 28, 4th P.M.

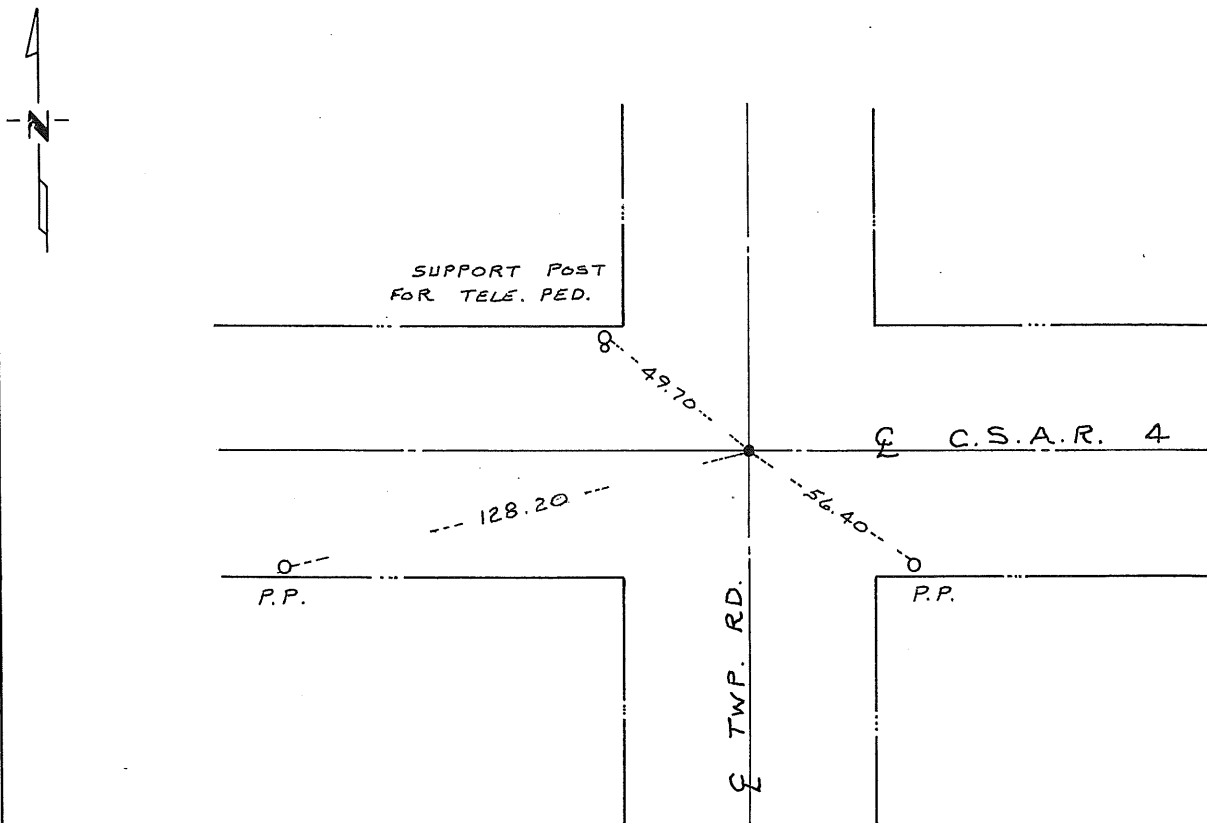
STATE OF MINNESOTA, County of Benton

At the corner location shown on the sketch:

- On 11/16/83 found a 1 1/4 inch solid iron rod in center line of County Road east-west and Township Road north-south
  - left monument as found,  lowered monument,  removed monument (explain)
- On \_\_\_\_\_ placed a \_\_\_\_\_
 

DATE

### SKETCH OF REFERENCE TIES



Statement of evidence relative to this corner location is on back of page.

I hereby certify that this document and the data contained herein was prepared by me or under my direct supervision.

David P. Regan 1/3/84  
SIGNATURE DATE

Registration No. 12236

- Land Surveyor,  Professional Engineer
- County Surveyor,  County Engineer

County Recorder  
OFFICE OF THE REGISTER OF DEEDS  
County of Benton

I hereby certify that this document was filed in the Reg. of Deeds office at 4 P.M. on the 11th day of January A.D., 1984  
County Recorder  
Register of Deeds F.A. Johnson

By \_\_\_\_\_, Deputy  
DOCUMENT NO. 167981