

CERTIFICATE OF LOCATION OF GOVERNMENT CORNER

NORTHEAST Corner of Section 31, Township 37, Range 28, _____ P.M.

STATE OF MINNESOTA, County of BENTON

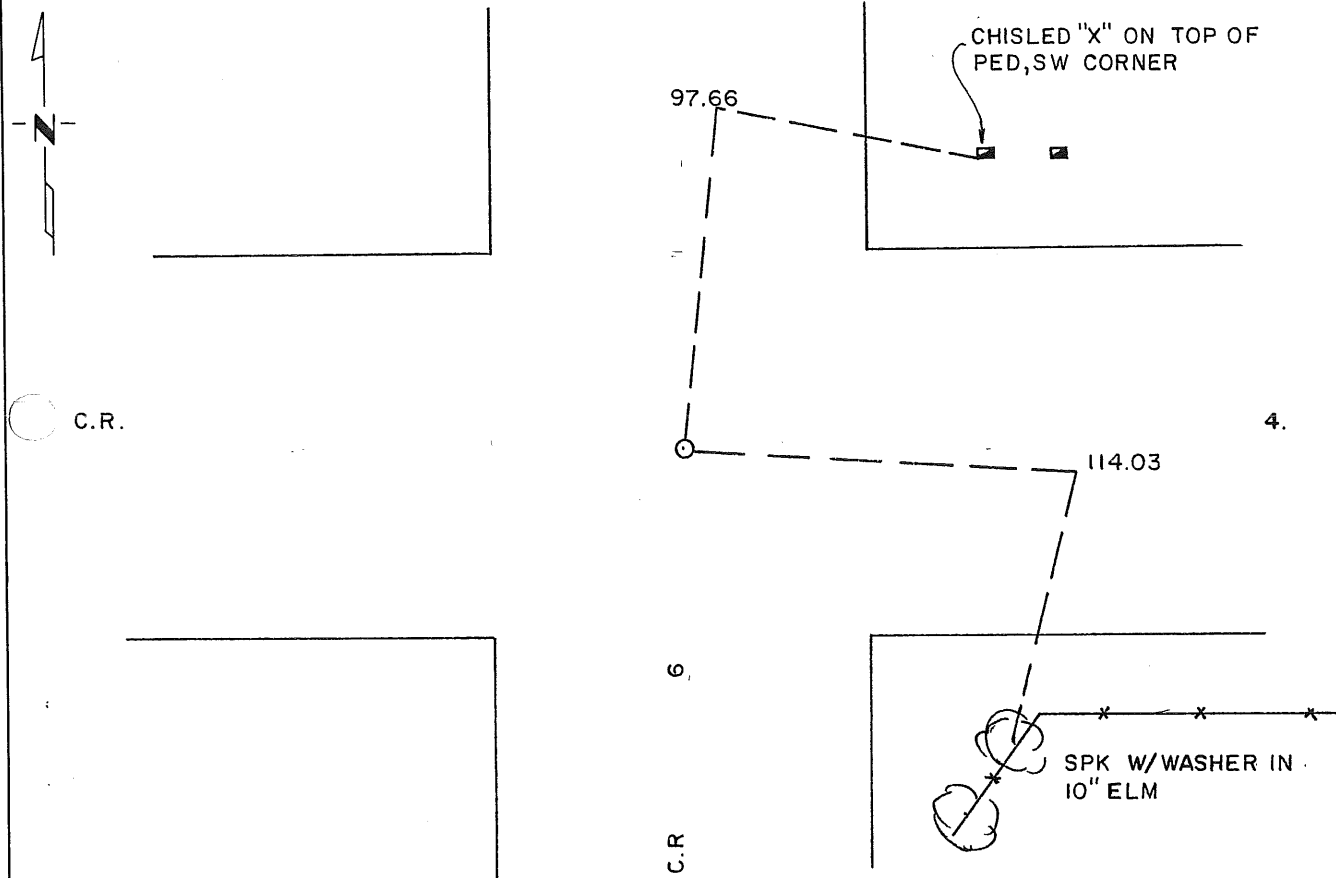
At the corner location shown on the sketch:

■ On 8-17-93 found a 1" SOLID IRON
DATE

left monument as found, lowered monument, ■ removed monument (explain)

■ On 10-1-93 placed a STANDARD CAST IRON MONUMENT
DATE

SKETCH OF REFERENCE TIES



Statement of evidence relative to this corner location is on back of page.

I hereby certify that this document and the data contained herein was prepared by me or under my direct supervision.

Ridney P. Williamson 1/5/95
SIGNATURE DATE

Registration No. 10918

- Land Surveyor, Professional Engineer
- County Surveyor, County Engineer

OFFICE OF THE COUNTY RECORDER

County of _____

I hereby certify that this document was filed in the Co. Recorders office at _____ .M. on the _____ day of _____ A.D., 19 _____

County Recorder _____

By _____, Deputy

DOCUMENT NO. _____

Statement of Evidence:

1. In 1855, the original government survey was performed.
- ~~2. On August 17, 1993, Williamson-Kotsmith, Inc. found a 1/2 inch solid pin on the centerline of C.S.A.H Number 4 and the centerline of a gravel road to the south and a tree line to the north. It measures 2,652.38 feet to the northwest corner and 2,684.36 to the northeast corner and 2,652.38 to the northwest corner.~~
- ~~3. On October 1, 1993, Williamson-Kotsmith, Inc. placed a Standard Cast Iron Monument at the same location.~~
2. On August 17, 1993, Williamson-Kotsmith, Inc. found a 1 inch solid iron at the intersection of the centerlines of C.S.A.H. Number 6 and C.S.A.H. Number 4.
3. On October 1, 1993, Williamson-Kotsmith, Inc. placed a Standard Cast Iron Monument at the same location.

227416

OFFICE OF
BENTON COUNTY RECORDER
BENTON COUNTY, MO
CERTIFIED TO BE FILED
AND/OR RECORDED ON

MAR 3 8 41 AM '95

ALICE G. ELLIENBERGER
COUNTY DEPUTY CLERK

BY 1704 DEPUTY X⁰⁴