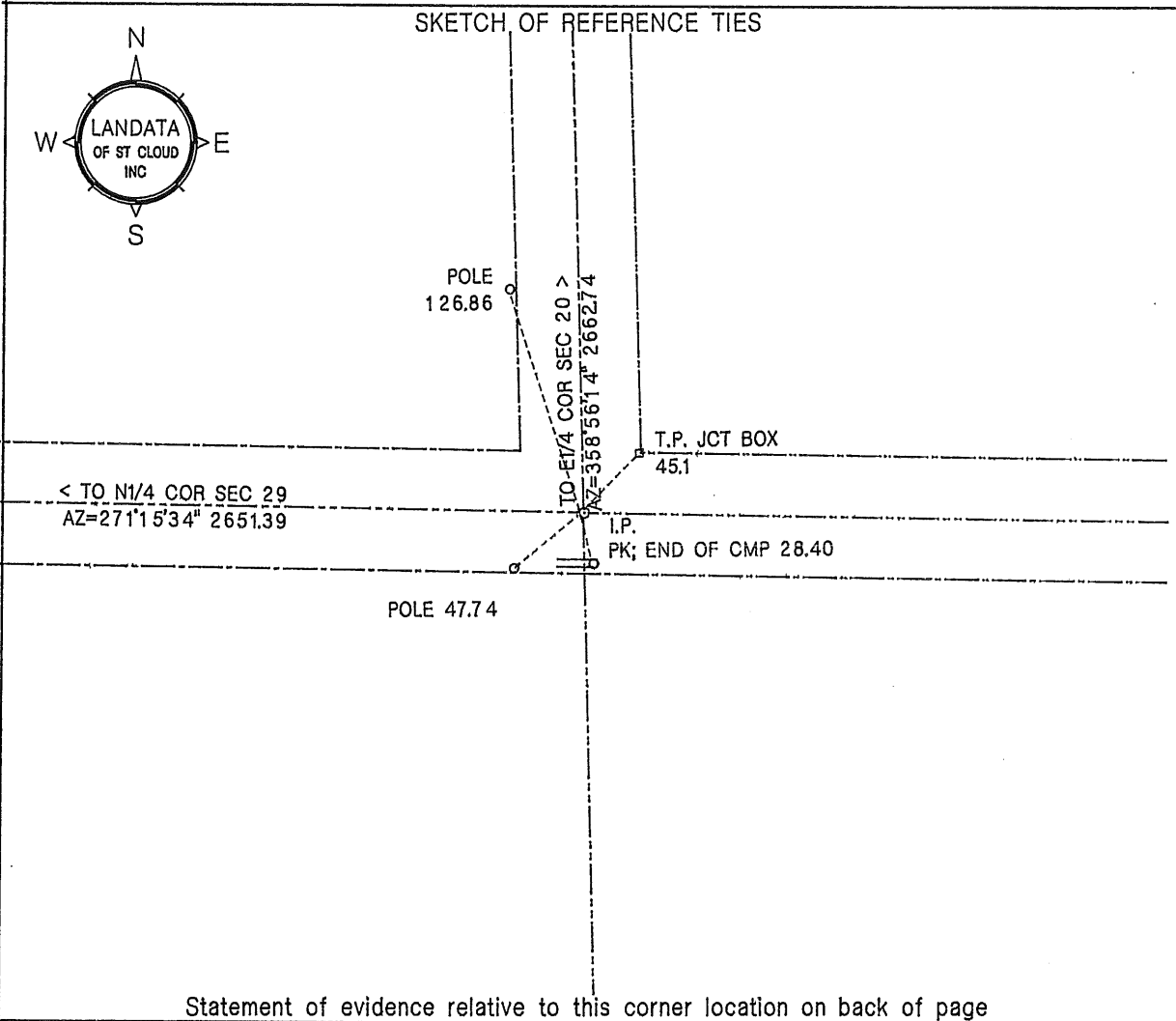


CERTIFICATE OF LOCATION OF GOVERNMENT CORNER

NORTH EAST corner of Section 29, Township 37, Range 28, 4th P.M.
Benton County, Minnesota.

On Aug 14, 2001, a one half inch iron pipe (I.P.) was placed at this location.



I hereby certify that this document and the data contained herein was prepared by me or under my direct supervision.

William F. Lunser 1-24-02
 William F. Lunser, L.S. Date
 Mn Reg No 9394

FB; 158/10;19 DISC; 13

OFFICE OF THE COUNTY RECORDER
 Benton County, Minnesota
 I hereby certify that this document was filed in this office at ___:___M. on the ___ day of _____, 20__.

County Recorder _____
 By _____, Deputy

DOCUMENT NO. _____

STATEMENT OF EVIDENCE:

No records were found to indicate remonumentation of this corner after its original placement by the U.S. Government Survey.

A 3/4 inch iron pipe was found 18 inches below grade at intersection of roads east, west and north.

Based on measurements to adjacent corners west and north, along with road alignment and occupation south, the found monument and accessories was accepted as the best evidence of an obliterated government corner.

A one half inch iron pipe was placed above the 3/4 inch pipe.



William F. Lunser, L.S.

283114

OFFICE OF
BENTON COUNTY RECORDER
BENTON COUNTY, MN
CERTIFIED TO BE FILED
AND/OR RECORDED ON

FEB 21 4 16 PM '02

MARILYN J. BIVAK
COUNTY RECORDER

BY  DEPUTY