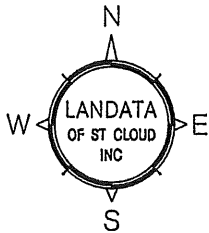


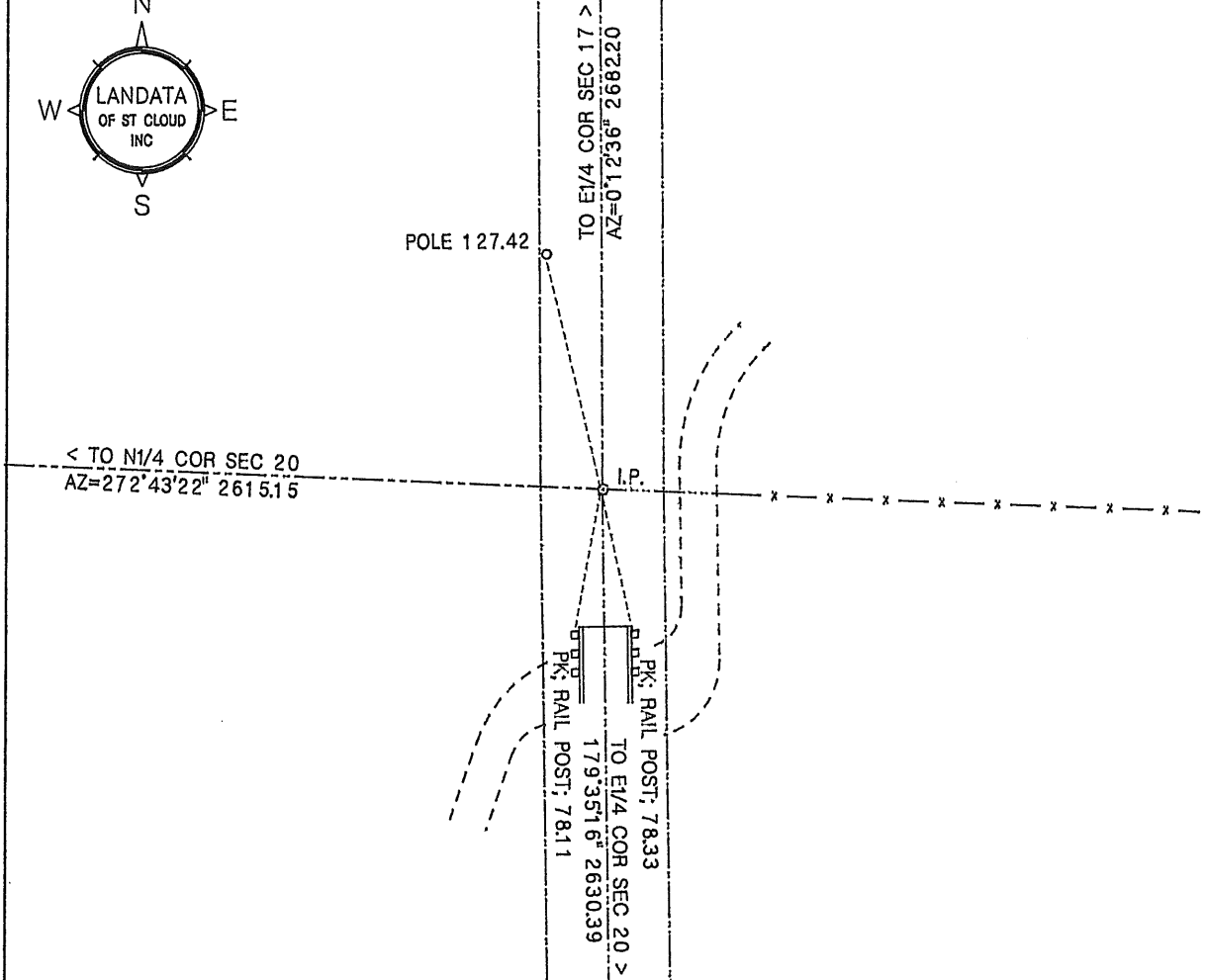
CERTIFICATE OF LOCATION OF GOVERNMENT CORNER

NORTH EAST corner of Section 20, Township 37, Range 28, 4th P.M.
Benton County, Minnesota.

On Aug 14, 2001, a one half inch iron pipe (I.P.) was placed at this location.



SKETCH OF REFERENCE TIES



Statement of evidence relative to this corner location on back of page

I hereby certify that this document and the data contained herein was prepared by me or under my direct supervision.

William F. Lunser 1-24-02
William F. Lunser, L.S. Date

Mn Reg No 9394

OFFICE OF THE COUNTY RECORDER
Benton County, Minnesota

I hereby certify that this document was filed in this office at ___:___M. on the ___ day of _____, 20__.

County Recorder _____

By _____, Deputy

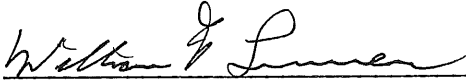
DOCUMENT NO. _____

STATEMENT OF EVIDENCE:

No records were found to indicate perpetuation of this corner after its original placement by the U.S. Government Survey.

Based on measurements to opposing corners south, west and north along with north-south road centerline and fence line east, this corner is presumed to be an obliterated government corner with fence and road as accessories.

A one half inch iron pipe was placed at this location.




William F. Lunser, L.S.

283116

OFFICE OF
BENTON COUNTY RECORDER
BENTON COUNTY, MN
CERTIFIED TO BE FILED
AND/OR RECORDED ON

FEB 21 4 16 PM '02

MARILYN J. BEVAK
COUNTY RECORDER
BY 
DEPUTY